



Dear Parents,

The SMART tag system helps increase safety and security for students riding on a school bus, leveraging technology to improve student management and communications on school buses.

SMART tag monitors student loading and unloading, providing real-time information to the Transportation Department, and you, the parent.

SMART tag will help...

- increase driver, school, and parent awareness
- ensure riders will load on the right bus and unload at the right stop
- maximize rider safety and security
- enable drivers to efficiently and effectively carry out their duties
- ensure Special Education and Pre-K students are released to authorized guardians.*

SMART tag Parent Portal

- SMART Alerts – sign up for SMART Alerts and receive emails or text messages when your child is approximately 10-15 minutes from their stop.
- SMART Locate – allows parents to view a map showing the bus as their child is being transported.
- Authorized guardian release feature. This tool allows parents to update authorized guardians through the Parent Portal.*

Make sure to register!

Go to parent.smart-tag.net and register to take advantage of the SMART tag Parent Features. If you are using a smart phone, you will be prompted to save the web app to your home screen. This will place the Parent App tile on your mobile device for easy access.

For more information about SMART tag, please visit our website at www.smart-tag.net.

* These are district configurable options

How it Works

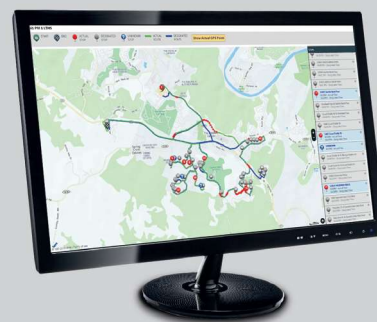


Student ID

Students are issued a Radio Frequency Identification (RFID) SMART tag ID. RFID technology is a newer technology that is replacing bar codes in many industries such as medical (patient, equipment & supplies tracking), libraries (book tracking), and even amusement park access (Disney World now uses RFID wristbands). These IDs communicate with the driver tablets. No student info is stored on the tag.

Bus Tablet

SMART tag school buses are equipped with a tablet computer and RFID reader. When loading and unloading a bus, riders present their ID onto the reader. The tablet will display if the rider is boarding the correct bus, and if they are getting off at their correct stop.

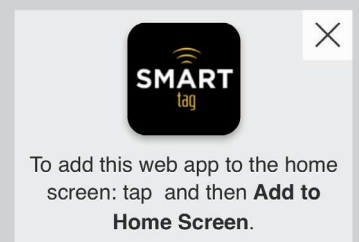


Transportation Administration

When bus activity begins, rider info is immediately available for the transportation administrators, so they can oversee all school bus activity.

Parent App

An online Parent Portal may be accessed at parent.smart-tag.net. On your iOS or Android smartphone you can save as web app to your home screen for easy access.



WHAT YOU WILL NEED

- The campus name for your child
- Your child's student ID#
- Your child's date of birth

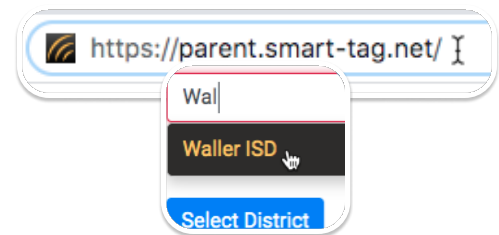
*

You only need to register for one child. If you have multiple children, the system will attempt to add them to your account

FOLLOW THESE STEPS:

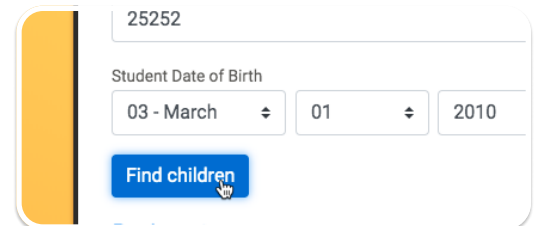
1

- On your phone or computer, go to **parent.smart-tag.net**
- Select **Lamar CISD** as your School District



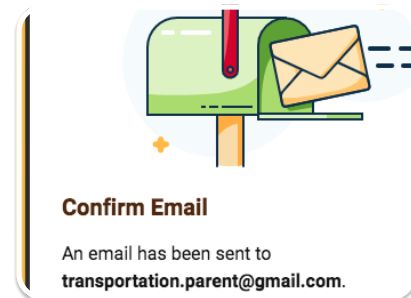
2

- Click **Register**, then **Begin registration**
- Enter the campus name, student ID# and date of birth for (1) of your children, then click **Find Children** and then **These are my children**



3

- Enter the email you would like to use for your account and setup a password. Click **Send Confirmation Code**
- Check your email for your registration link. **Click the link** at the bottom of your email
- In your web browser, **Click Submit**



That's it! You can now log into your account!