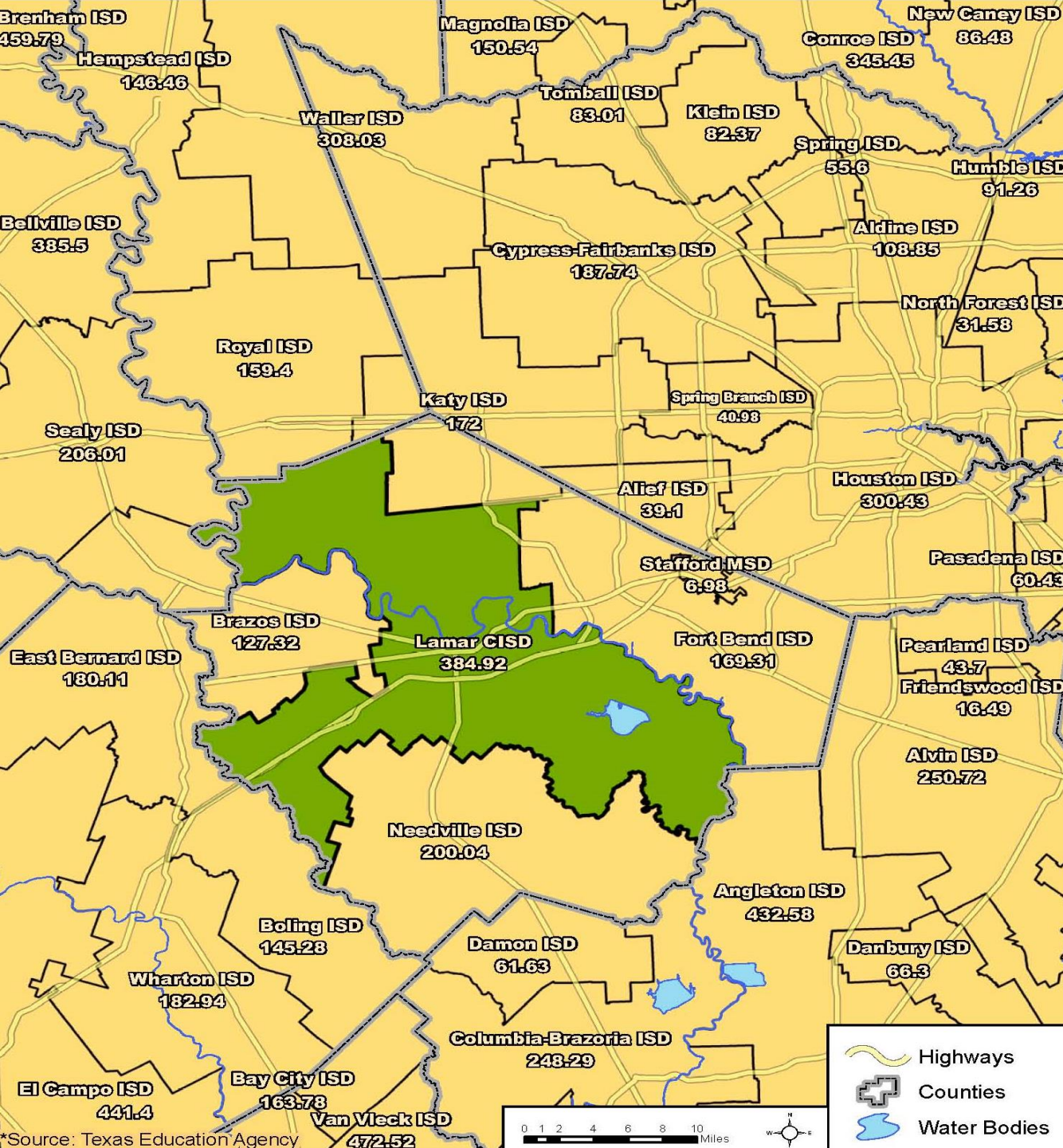


Lamar C.I.S.D.

Demographic Update

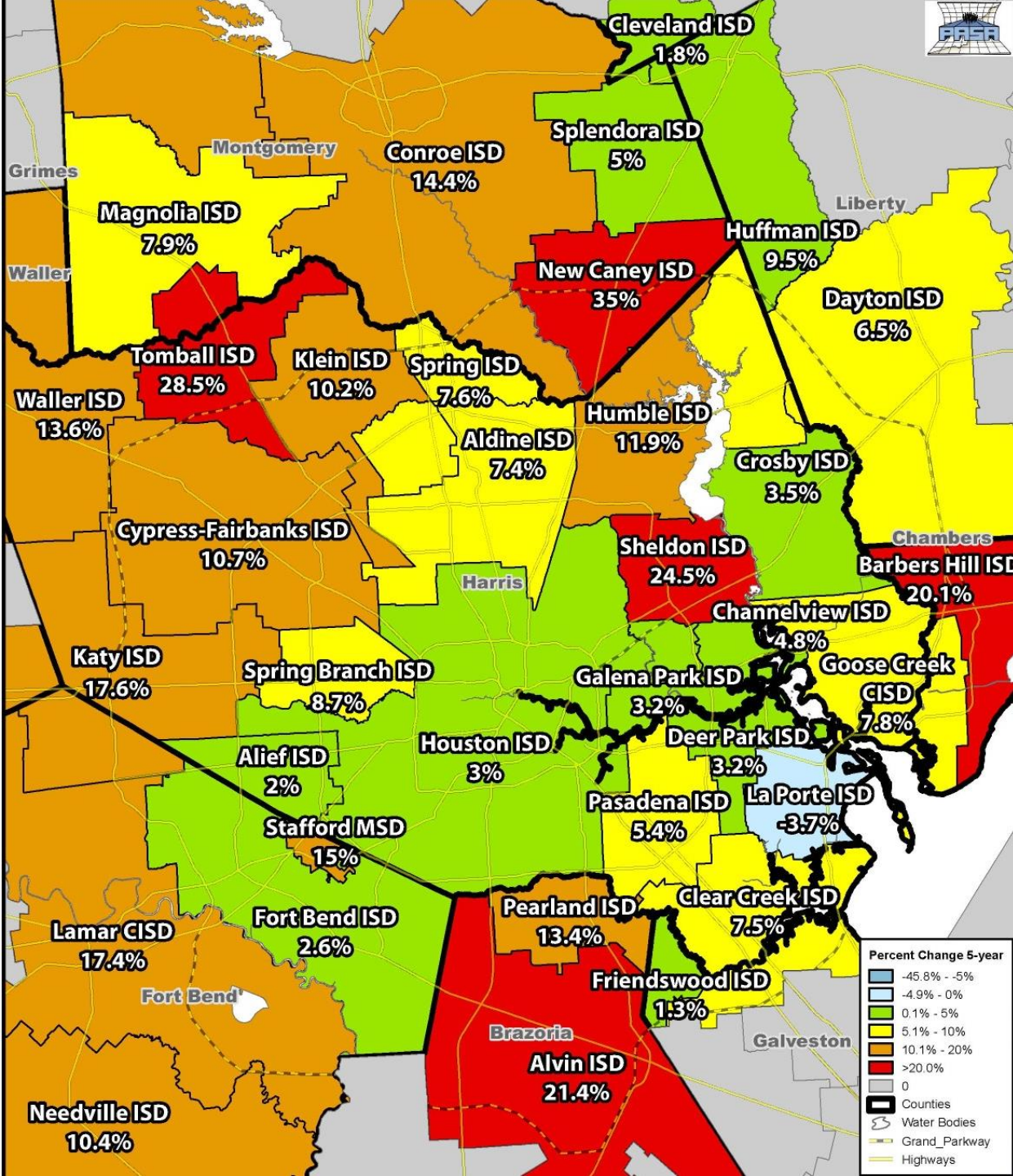
2014 Overview





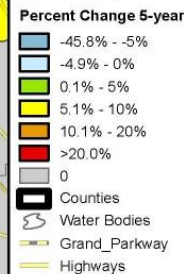
Square Miles In Lamar C.I.S.D.

*Source: Texas Education Agency



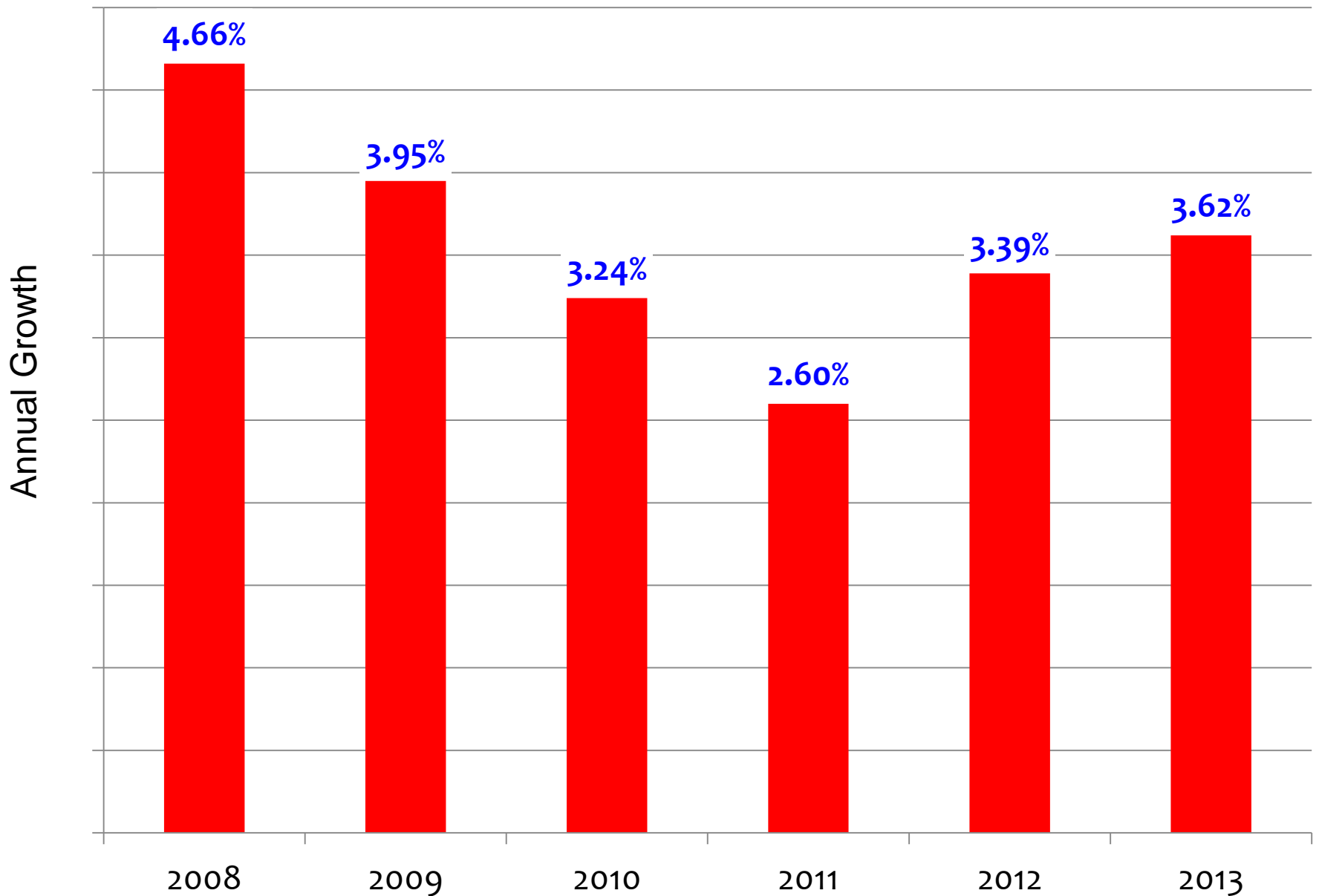
Percent Change In Student Enrollment

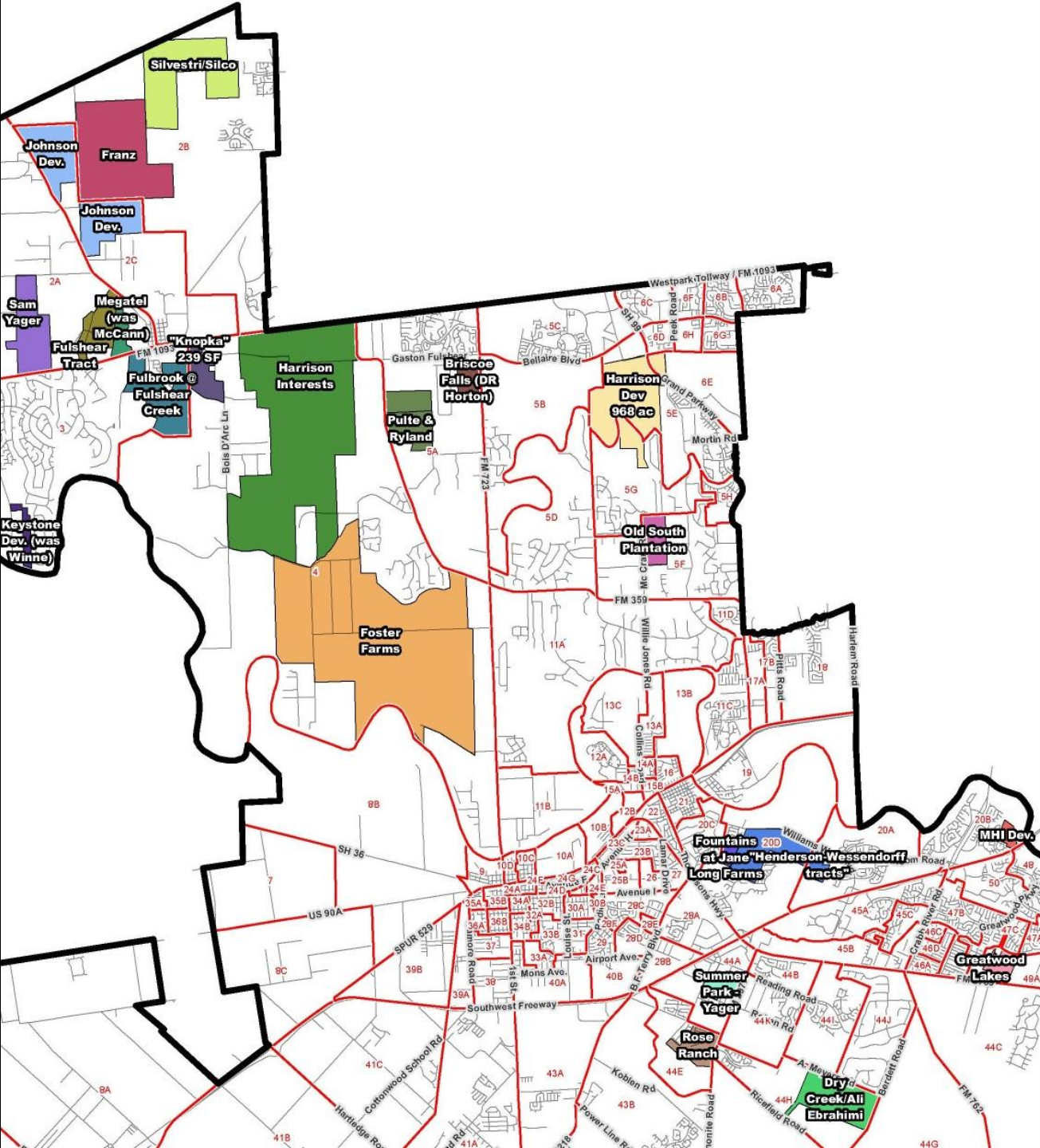
Fall 2008 to Fall 2013



*pre-PEIMS enrollment estimate

Past Growth Rates





Newly Planned Developments in the Past Year

Future Highest Growth Residential Developments

Planning Unit	Subdivision	New Housing Occupancies		
		2014-18	2018-23	2014-23
4	Harrison Interests/Foster Farms	162	1910	2,072
2B	Cross Creek Ranch	501	1101	1,602
2B	DR Horton-Tamarron Lakes & Fulsher Crossing	387	890	1,277
2B	Firethorne West	860	176	1,036
44D, 44F, 44G	George Foundation	158	700	858
5C	Lakes of Bella Terra	768	27	795
3	Fulbrook at Fulshear Creek	346	445	791
20D	Del Webb Sweetgrass	597	155	752
2C	Fulshear Farms-Johnson Development	122	595	717
44I	Bonbrook Plantation	381	263	644
2B	Silvestri/Silco	138	465	603
2A	Twinwood	25	545	570
2A	Sam Yager-was Westheimer-Fulsher Parcel	118	445	563
44B	Summer Lakes	260	291	551
5A	Pulte-ryland - was Poarch/Swinbank	153	385	538
6E	Long Meadow Farms	266	249	515
44H	Walnut Creek	230	276	506
41A	Briarcreek Crossing	226	269	495
2A	Beazer-Fulshear Invest's & Fulshear Equine	145	344	489

Projected New Housing Occupancies 2014 – 2023

Year Ending in October:	Single Family	Multi- Family	Total New Housing Units
2014	1,338	246	1,584
2015	1,897	635	2,532
2016	2,147	527	2,674
2017	2,608	789	3,397
2018	3,063	1,129	4,192
2019	3,465	1,222	4,687
2020	3,916	1,030	4,946
2021	4,211	1,023	5,234
2022	4,533	859	5,392
2023	4,823	582	5,405
2014-2018	11,053	3,326	14,379
2019-2023	20,948	4,716	25,664
2014-2023	32,001	8,042	40,043



Map Layers

□ District Boundary

— Streets

Planning Units

0 - 10

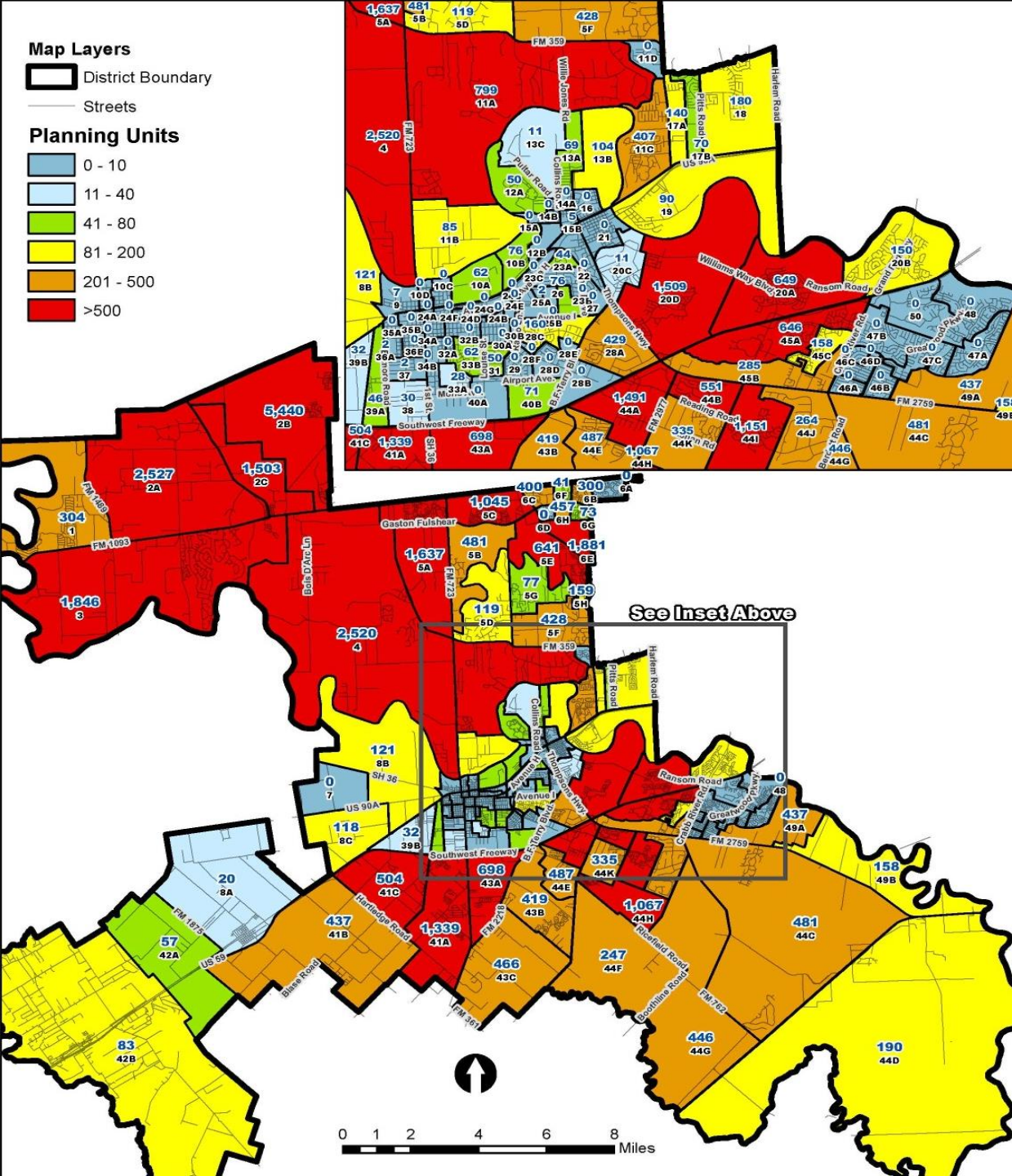
11 - 40

41 - 80

81 - 200

201 - 500

>500



Projected New Housing Occupancies

Feb 2014 to Oct 2023



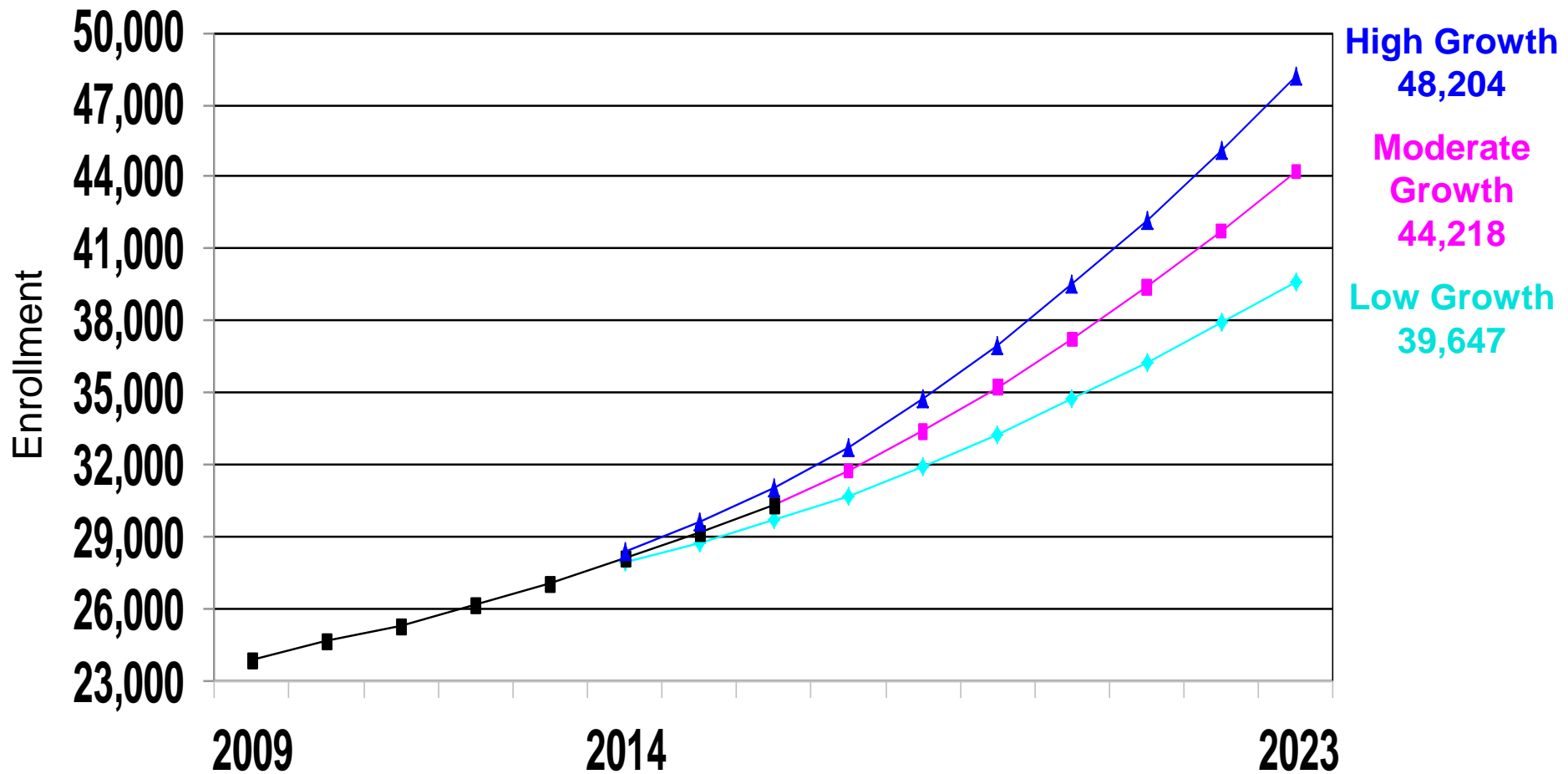
Housing Units in Lamar CISD

Current and Future

	Single-Family		Multi-Family	
	#	%	#	%
Current (2012)	37,920	86%	6,082	14%
Estimated Growth (2012-2013)	1,460	71%	582	29%
Projected Added (2014-2023)	32,001	80%	8,042	20%
Projected Total (2023)	71,381	83%	14,706	17%



Three Scenarios of Growth

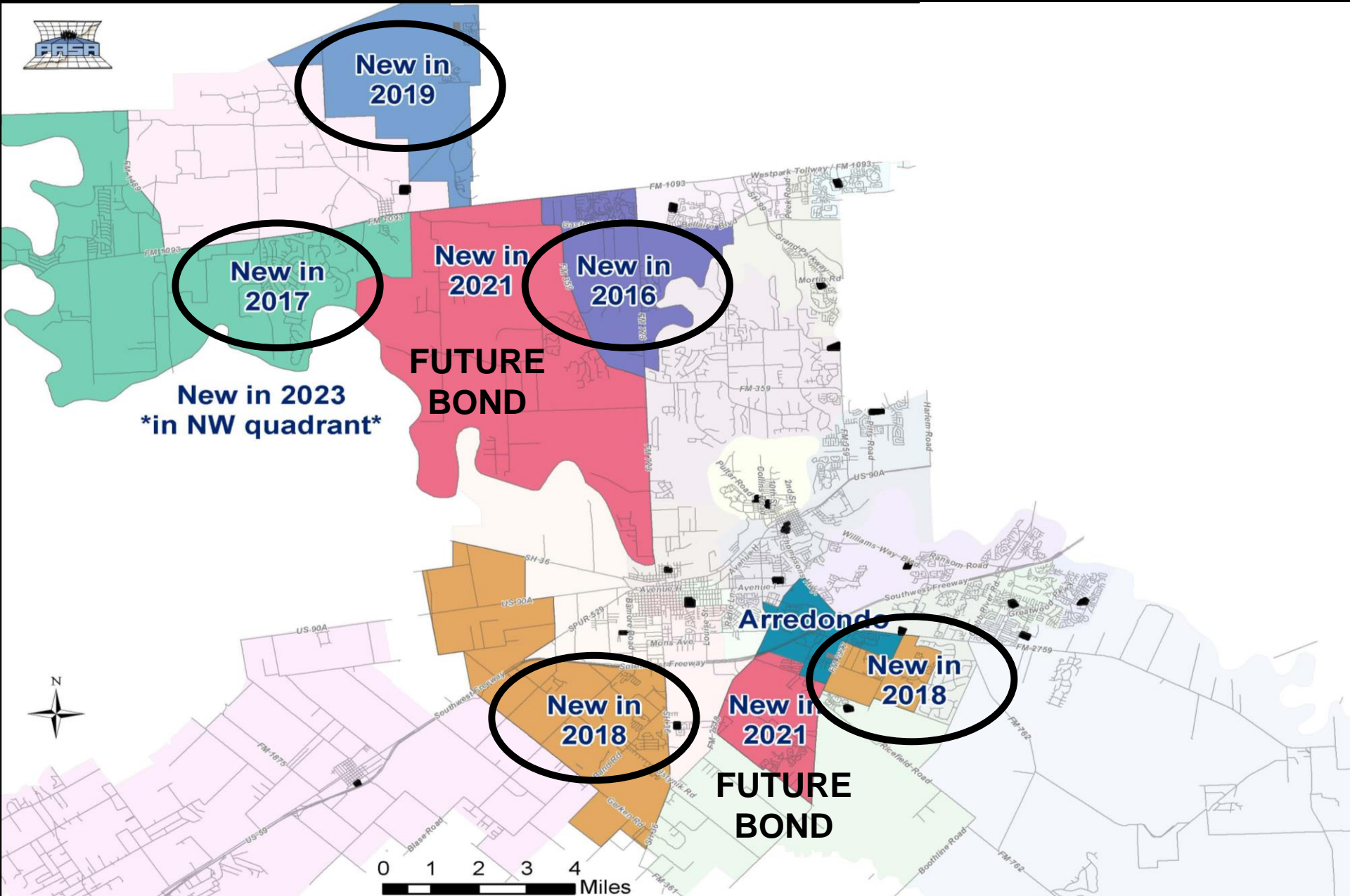


Elementary School Long Range Plan Comparison to Previous Years

Elementary											
	2014	2015	2016	2017	2018	2019	2020	2021	2022	2023	Total
2013-14 Study		1	1	1	2	1		2		1	9
2012-13 Study	1		1		2	2		1			7
2011-12 Study	1			1		2					4
2010-11 Study		1		2	1	1					5



Elementary Long Range Planning Summary



New in 2019

New in 2017

New in 2021

New in 2016

New in 2023
in NW quadrant

FUTURE BOND

Arredondo

New in 2018

New in 2021

New in 2018

FUTURE BOND



ARREDONDO ELEMENTARY ATTENDANCE BOUNDARY COMMITTEE

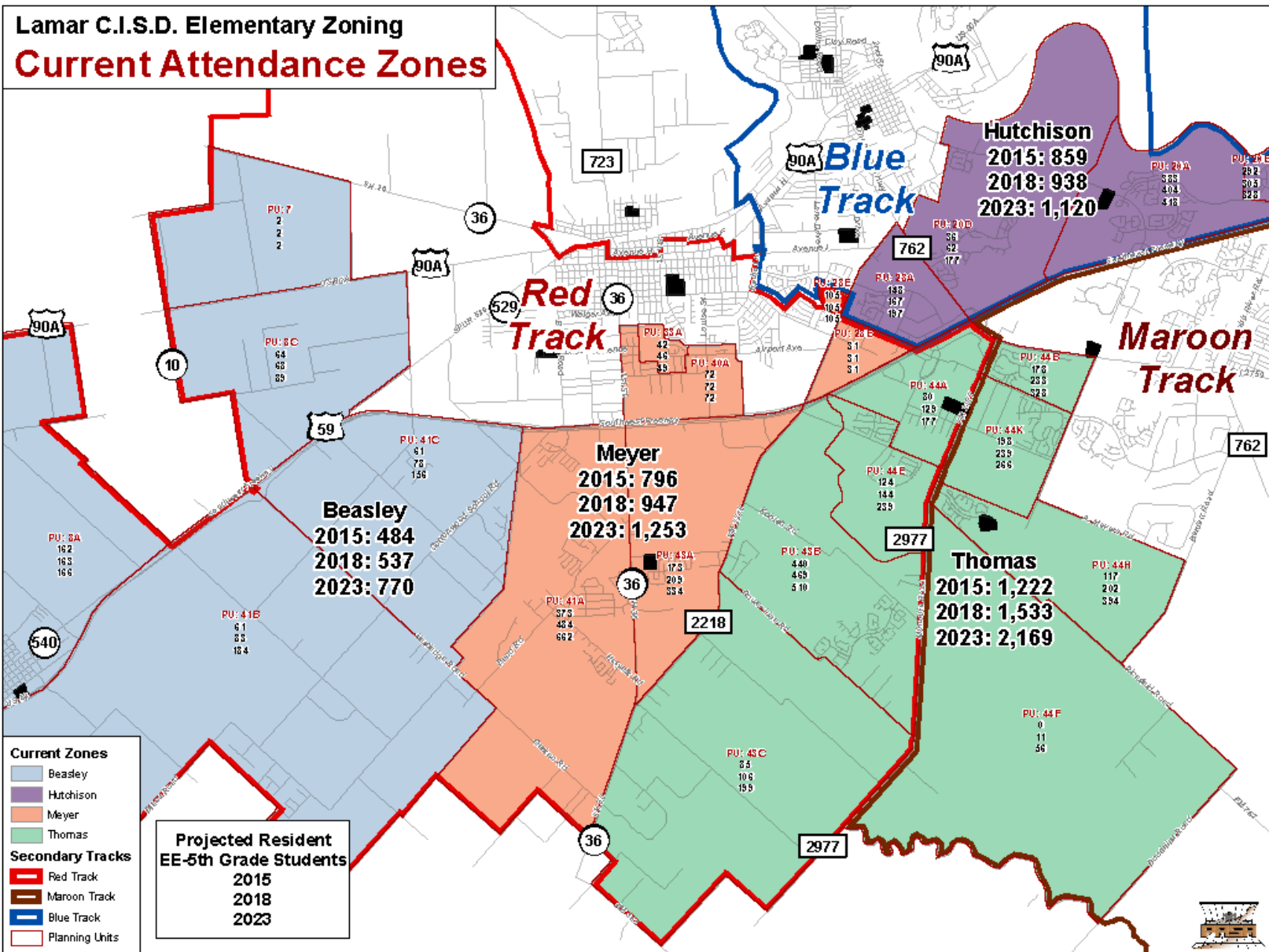


LAMAR CISD

A PROUD TRADITION | A BRIGHT FUTURE

Lamar C.I.S.D. Elementary Zoning
Current Attendance Zones

DRAFT



**Lamar C.I.S.D. Elementary Re-Zoning
Projected Resident EE-4th Grade Students**

2014-15 Elementary Attendance Zones

	Fall 2015	Fall 2016	Fall 2017	Fall 2018	Fall 2019	Fall 2020	Fall 2021	Fall 2022	Fall 2023
Arredondo Elementary									
<i>Practical Capacity</i>									
<i>Students Projected</i>									
<i>Percent Utilization</i>									
<i>Student Margin</i>									
Beasley Elementary									
<i>Practical Capacity</i>	370	370	370	370	370	370	370	370	370
<i>Students Projected</i>	484	491	511	537	572	614	660	713	770
<i>Percent Utilization</i>	131%	133%	138%	145%	155%	166%	178%	193%	208%
<i>Student Margin</i>	-114	-121	-141	-167	-202	-244	-290	-343	-400
Hutchison Elementary									
<i>Practical Capacity</i>	750	750	750	750	750	750	750	750	750
<i>Students Projected</i>	859	882	909	938	977	1,019	1,059	1,091	1,120
<i>Percent Utilization</i>	115%	118%	121%	125%	130%	136%	141%	145%	149%
<i>Student Margin</i>	-109	-132	-159	-188	-227	-269	-309	-341	-370
Meyer Elementary									
<i>Practical Capacity</i>	750	750	750	750	750	750	750	750	750
<i>Students Projected</i>	796	835	889	947	1,019	1,094	1,148	1,201	1,253
<i>Percent Utilization</i>	106%	111%	119%	126%	136%	146%	153%	160%	167%
<i>Student Margin</i>	-46	-85	-139	-197	-269	-344	-398	-451	-503
Thomas Elementary									
<i>Practical Capacity</i>	750	750	750	750	750	750	750	750	750
<i>Students Projected</i>	1,222	1,335	1,444	1,533	1,639	1,761	1,887	2,031	2,169
<i>Percent Utilization</i>	163%	178%	193%	204%	219%	235%	252%	271%	289%
<i>Student Margin</i>	-472	-585	-694	-783	-889	-1,011	-1,137	-1,281	-1,419

131%

3 YEARS

4 YEARS

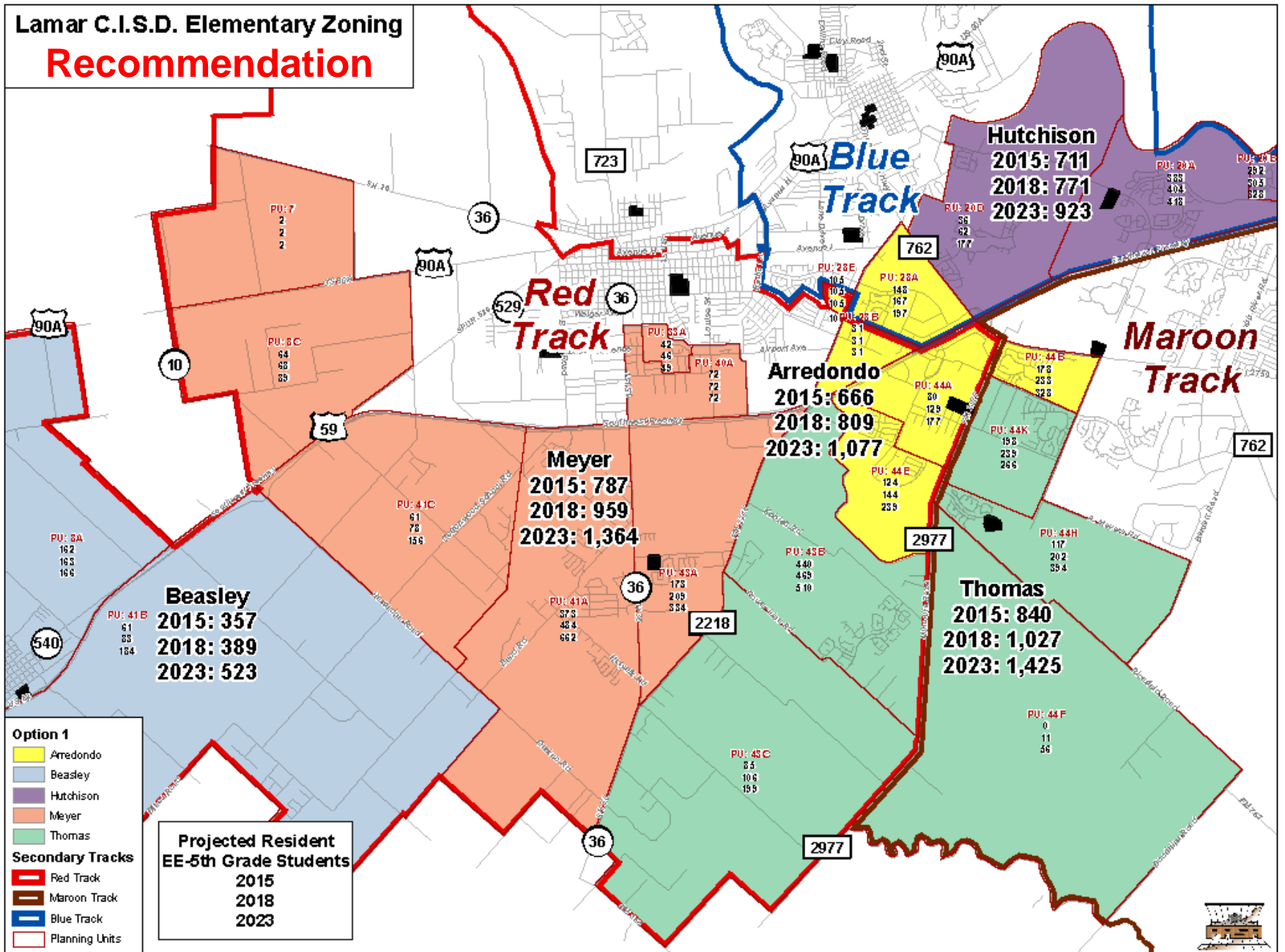
163%

Feeder Patterns

	2015			2023		
	Red Track	Blue Track	Maroon Track	Red Track	Blue Track	Maroon Track
Arredondo						
Beasley	75%	25%		81%	19%	
Hutchison		100%			100%	
Meyer	100%			100%		
Thomas	60%		40%	52%		48%

Lamar C.I.S.D. Elementary Zoning
Recommendation

DRAFT



**Lamar C.I.S.D. Elementary Re-Zoning
Projected Resident EE-4th Grade Students**

Recommended Option

6 YEARS

	Fall 2015	Fall 2016	Fall 2017	Fall 2018	Fall 2019	Fall 2020	Fall 2021	Fall 2022	Fall 2023
Arredondo Elementary									
<i>Practical Capacity</i>	750	750	750	750	750	750	750	750	750
<i>Students Projected</i>	666	710	766	809	857	914	969	1,027	1,077
<i>Percent Utilization</i>	89%	95%	102%	108%	114%	122%	129%	137%	144%
<i>Student Margin</i>	84	40	-16	-59	-107	-164	-219	-277	-327

7 YEARS

Beasley Elementary									
<i>Practical Capacity</i>	370	370	370	370	370	370	370	370	370
<i>Students Projected</i>	357	363	375	389	408	431	457	489	523
<i>Percent Utilization</i>	96%	98%	101%	105%	110%	116%	124%	132%	141%
<i>Student Margin</i>	13	7	-5	-19	-38	-61	-87	-119	-153

9 YEARS

Hutchison Elementary									
<i>Practical Capacity</i>	750	750	750	750	750	750	750	750	750
<i>Students Projected</i>	711	729	749	771	801	834	866	895	923
<i>Percent Utilization</i>	95%	97%	100%	103%	107%	111%	115%	119%	123%
<i>Student Margin</i>	39	21	1	-21	-51	-84	-116	-145	-173

4 YEARS

Meyer Elementary									
<i>Practical Capacity</i>	750	750	750	750	750	750	750	750	750
<i>Students Projected</i>	787	827	889	959	1,047	1,141	1,215	1,289	1,364
<i>Percent Utilization</i>	105%	110%	119%	128%	140%	152%	162%	172%	182%
<i>Student Margin</i>	-37	-77	-139	-209	-297	-391	-465	-539	-614

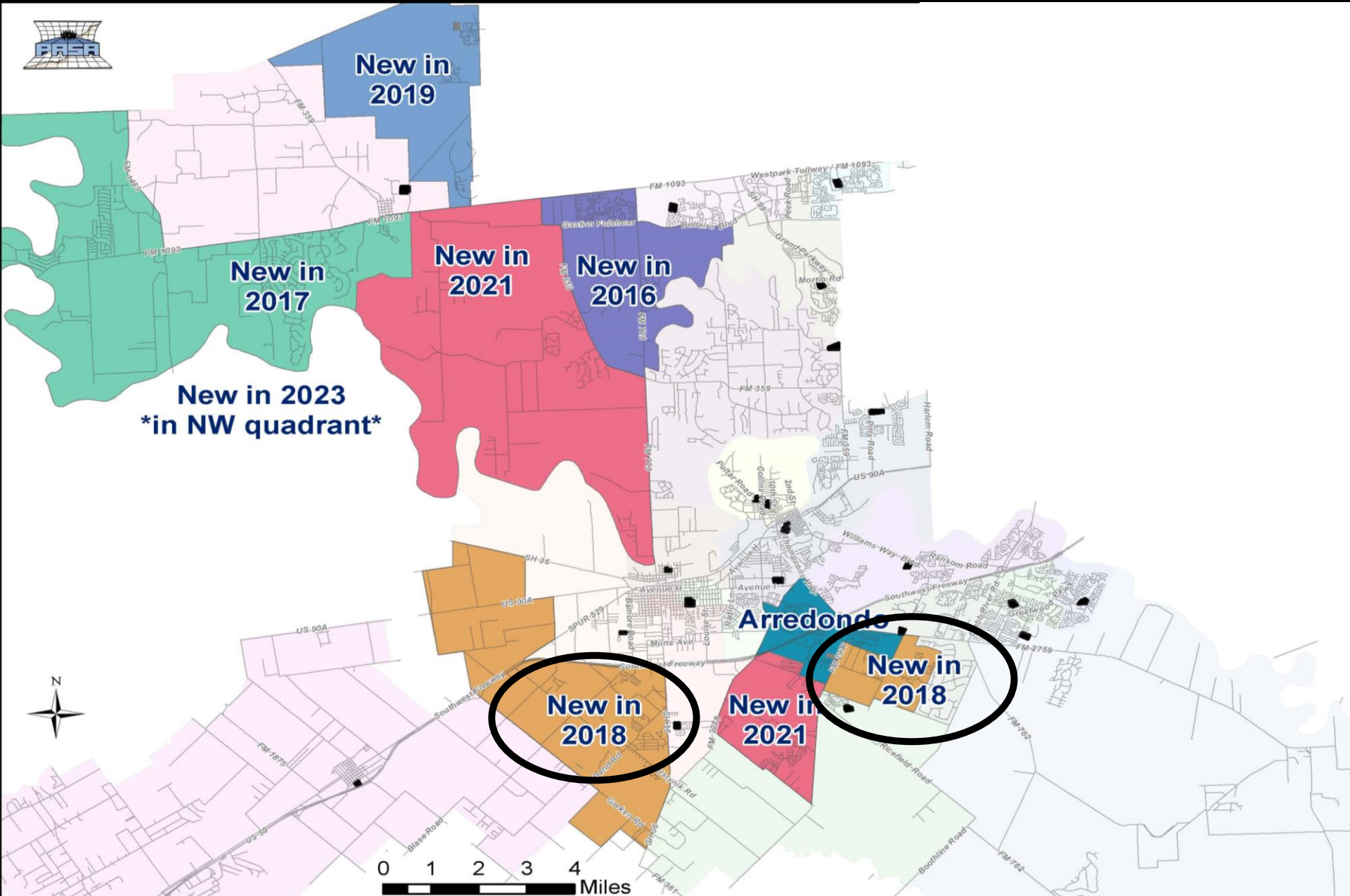
2 YEARS

Thomas Elementary									
<i>Practical Capacity</i>	750	750	750	750	750	750	750	750	750
<i>Students Projected</i>	840	914	974	1,027	1,094	1,168	1,247	1,336	1,425
<i>Percent Utilization</i>	112%	122%	130%	137%	146%	156%	166%	178%	190%
<i>Student Margin</i>	-90	-164	-224	-277	-344	-418	-497	-586	-675

Rationale for Recommendation

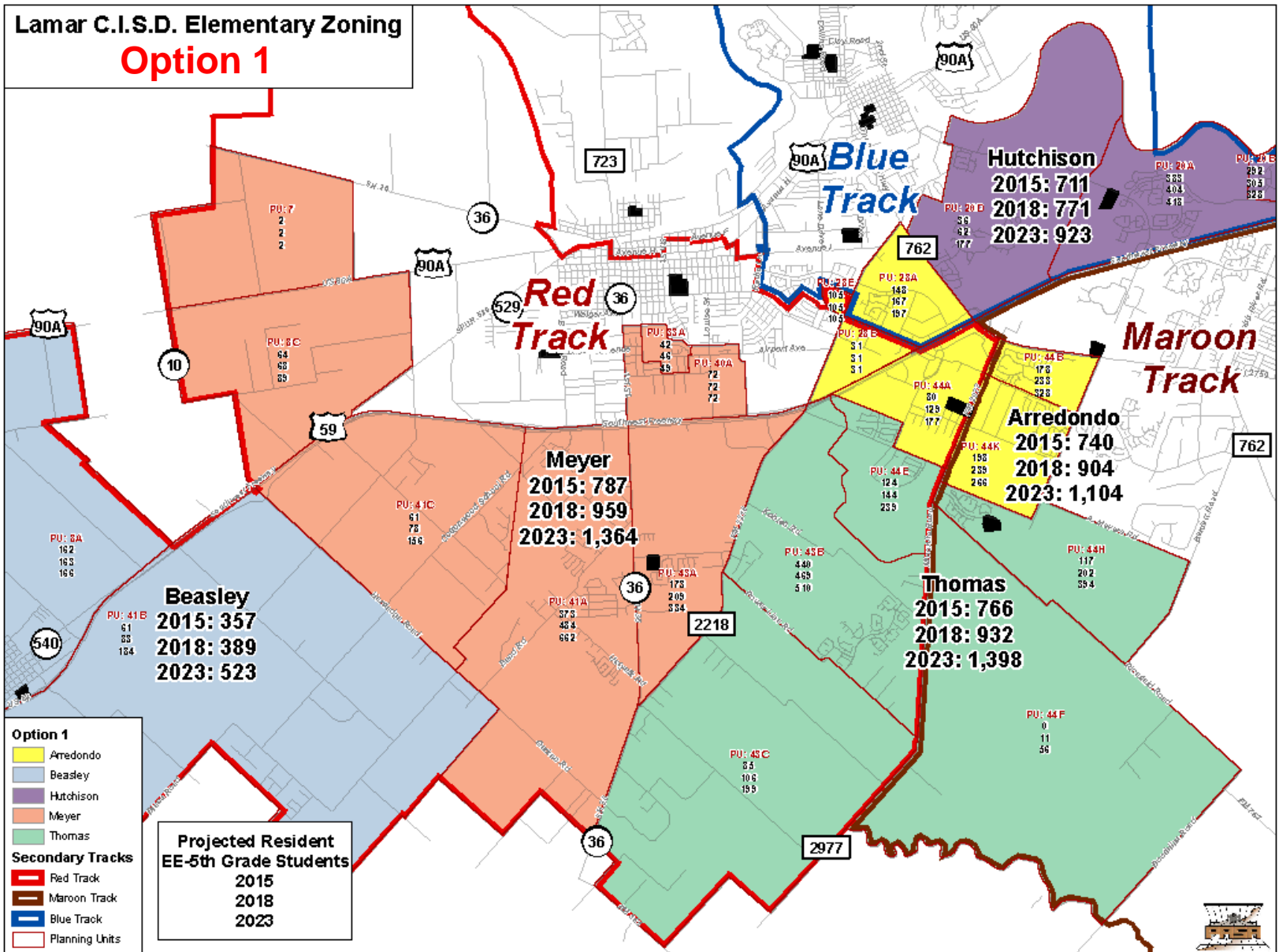
- **Beasley enrollment remains under capacity for six years (very little growth/small campus)**
- **Only viable option to reduce higher enrollment at Hutchison in the near future**
- **Removes likelihood that students will be zoned back to current school in the future**
- **Two projected schools approved in the 2014 bond are available to alleviate sustained growth at Thomas and Meyer**

Elementary Long Range Planning Summary



**Lamar C.I.S.D. Elementary Zoning
Option 1**

DRAFT



**Lamar C.I.S.D. Elementary Re-Zoning
Projected Resident EE-4th Grade Students**

Option 1

4 YEARS

7 YEARS

9 YEARS

4 YEARS

***4 YEARS**

	Fall 2015	Fall 2016	Fall 2017	Fall 2018	Fall 2019	Fall 2020	Fall 2021	Fall 2022	Fall 2023
Arredondo Elementary									
<i>Practical Capacity</i>	750	750	750	750	750	750	750	750	750
<i>Students Projected</i>	740	801	863	904	948	993	1,035	1,075	1,104
<i>Percent Utilization</i>	99%	107%	115%	121%	126%	132%	138%	143%	147%
<i>Student Margin</i>	10	-51	-113	-154	-198	-243	-285	-325	-354
Beasley Elementary									
<i>Practical Capacity</i>	370	370	370	370	370	370	370	370	370
<i>Students Projected</i>	357	363	375	389	408	431	457	489	523
<i>Percent Utilization</i>	96%	98%	101%	105%	110%	116%	124%	132%	141%
<i>Student Margin</i>	13	7	-5	-19	-38	-61	-87	-119	-153
Hutchison Elementary									
<i>Practical Capacity</i>	750	750	750	750	750	750	750	750	750
<i>Students Projected</i>	711	729	749	771	801	834	866	895	923
<i>Percent Utilization</i>	95%	97%	100%	103%	107%	111%	115%	119%	123%
<i>Student Margin</i>	39	21	1	-21	-51	-84	-116	-145	-173
Meyer Elementary									
<i>Practical Capacity</i>	750	750	750	750	750	750	750	750	750
<i>Students Projected</i>	787	827	889	959	1,047	1,141	1,215	1,289	1,364
<i>Percent Utilization</i>	105%	110%	119%	128%	140%	152%	162%	172%	182%
<i>Student Margin</i>	-37	-77	-139	-209	-297	-391	-465	-539	-614
Thomas Elementary									
<i>Practical Capacity</i>	750	750	750	750	750	750	750	750	750
<i>Students Projected</i>	766	823	877	932	1,003	1,089	1,181	1,288	1,398
<i>Percent Utilization</i>	102%	110%	117%	124%	134%	145%	157%	172%	186%
<i>Student Margin</i>	-16	-73	-127	-182	-253	-339	-431	-538	-648

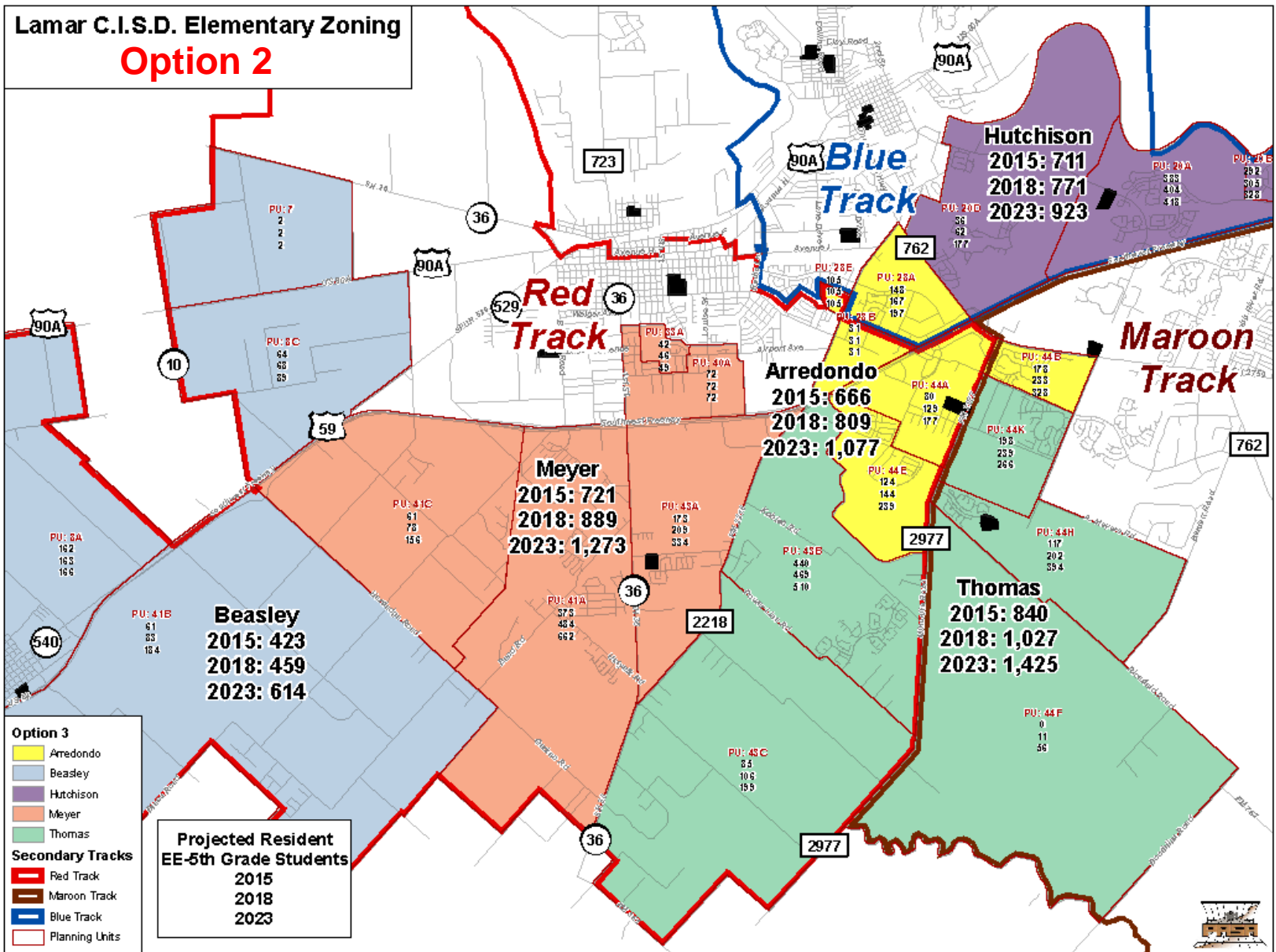
Feeder Patterns

***PU 44K
potentially
rezoned back to
Thomas in future**

	2015			2023		
	Red Track	Blue Track	Maroon Track	Red Track	Blue Track	Maroon Track
Arredondo	29%	20%	51%	28%	18%	54%
Beasley	66%	34%		72%	28%	
Hutchison		100%			100%	
Meyer	100%			100%		
Thomas	85%		15%	68%		32%

Lamar C.I.S.D. Elementary Zoning
Option 2

DRAFT



**Lamar C.I.S.D. Elementary Re-Zoning
Projected Resident EE-4th Grade Students**

Option 2

6 YEARS

4 YEARS

9 YEARS

5 YEARS

2 YEARS

	Fall 2015	Fall 2016	Fall 2017	Fall 2018	Fall 2019	Fall 2020	Fall 2021	Fall 2022	Fall 2023
Arredondo Elementary									
Practical Capacity	750	750	750	750	750	750	750	750	750
Students Projected	666	710	766	809	857	914	969	1,027	1,077
Percent Utilization	89%	95%	102%	108%	114%	122%	129%	137%	144%
Student Margin	84	40	-16	-59	-107	-164	-219	-277	-327
Beasley Elementary									
Practical Capacity	370	370	370	370	370	370	370	370	370
Students Projected	423	429	442	459	481	508	538	575	614
Percent Utilization	114%	116%	119%	124%	130%	137%	145%	155%	166%
Student Margin	-53	-59	-72	-89	-111	-138	-168	-205	-244
Hutchison Elementary									
Practical Capacity	750	750	750	750	750	750	750	750	750
Students Projected	711	729	749	771	801	834	866	895	923
Percent Utilization	95%	97%	100%	103%	107%	111%	115%	119%	123%
Student Margin	39	21	1	-21	-51	-84	-116	-145	-173
Meyer Elementary									
Practical Capacity	750	750	750	750	750	750	750	750	750
Students Projected	721	761	822	889	974	1,064	1,134	1,203	1,273
Percent Utilization	96%	101%	110%	119%	130%	142%	151%	160%	170%
Student Margin	29	-11	-72	-139	-224	-314	-384	-453	-523
Thomas Elementary									
Practical Capacity	750	750	750	750	750	750	750	750	750
Students Projected	840	914	974	1,027	1,094	1,168	1,247	1,336	1,425
Percent Utilization	112%	122%	130%	137%	146%	156%	166%	178%	190%
Student Margin	-90	-164	-224	-277	-344	-418	-497	-586	-675

Feeder Patterns

	2015			2023		
	Red Track	Blue Track	Maroon Track	Red Track	Blue Track	Maroon Track
Arredondo	51%	22%	27%	51%	18%	30%
Beasley	71%	29%		76%	24%	
Hutchison		100%			100%	
Meyer	100%			100%		
Thomas	63%		38%	50%		50%

Lamar C.I.S.D. Elementary Zoning Development Overview

