

# Welcome to Meyer Elementary!



School Hours: 7:45 a.m. to 3:10 p.m.

Doors Open for Student Arrival: 7:10 a.m.

Breakfast Served: 7:10 a.m. to 7:40 a.m.

Office Hours: 7:10 a.m. to 4:00 p.m.



# NEW SCHOOL HOURS

## EFFECTIVE 2023-2024 SCHOOL YEAR

As one of the fastest-growing districts in Texas, it is our responsibility to anticipate and respond to the needs of our students, parents, and staff – now more than ever.

With campuses stretched across 385 square miles, our families and staff have spent the last two years combatting bus driver shortages and long transit hours, and the challenges have only increased.

To alleviate these growing pains, our Trustees approved new school hours at the February board meeting. We have designed the following four-tier system, which will be implemented at the beginning of the 2023-2024 school year. This shift ensures that we have enough drivers for each route and eliminates the need for comeback routes.

Our commitment to serve the community is strong. Thank you for staying engaged. Your involvement ensures that our District carries on a proud tradition of excellence.



- 7:15 AM to 2:40 PM** Elementary (Group A)
- 7:45 AM to 3:10 PM** Elementary (Group B)
- 8:25 AM to 3:50 PM** High School
- 9:05 AM to 4:30 PM** Middle School & Junior High

### Group A

- Adolphus
- Arredondo
- Austin
- Beasley
- Bentley
- Campbell
- Carter
- Culver
- Hubenak
- Hutchison
- Lindsey
- Morgan
- Phelan
- Ray
- Seguin
- Velasquez

### Group B

- Bowie
- Dickinson
- Frost
- Gray
- Huggins
- Jackson
- Long
- McNeill
- Meyer
- Pink
- Smith
- Tamarron
- Thomas
- Travis
- Williams

For more information, please visit [www.LCISD.org/hours](http://www.LCISD.org/hours).

LAMAR CISD  
FASTEST GROWING SCHOOL DISTRICT IN TEXAS



# 2023 - 2024 Instructional Calendar

3911 Avenue I, Rosenberg, Texas 77471 • 832.223.0000 • www.LCISD.org

## Pre-Start Staff Development

July 27, July 31 ..... New Teacher Staff Development  
 Aug. 1 ..... Opt Out Day  
 Aug. 2-Aug.9 ..... Pre-Start Staff Development  
 Aug. 10, Aug. 11 ..... Pre-Start Teacher Workdays

## Student & Staff Holidays

July 4 ..... Independence Day  
 Sept. 4 ..... Labor Day  
 Sept. 29 ..... Fort Bend County Fair Day  
 Oct. 6 - Oct. 9 ..... Fall Break  
 Nov. 20 - 24 ..... Thanksgiving Break  
 Dec. 18 - Jan. 1 ..... Winter Break  
 Jan. 15 ..... MLK Day  
 Mar. 11 - 15 ..... Spring Break  
 Apr. 1 ..... Spring Holiday  
 May 27 ..... Memorial Day  
 June 19 ..... Juneteenth

## Staff Development & Student Holidays

Oct. 27, Jan. 2, Feb. 19, Mar. 29 (DMA), May 24

## Early Dismissal / Teacher Work Day or Staff Development

Nov. 17, Dec. 15, Mar. 8, May 23

## Information and Notes

Instructional Days ..... 169 Full + 4 Half = 173  
 Total Minutes ..... 77,055

## Grading Periods

### Elementary (K-5) Grading Periods

| Elementary | Dates             | Inst Days |
|------------|-------------------|-----------|
| 1 9 W      | Aug. 14 - Oct. 13 | 41        |
| 2 9 W      | Oct. 16 - Dec. 15 | 39        |
| 3 9 W      | Jan. 3 - Mar. 8   | 46        |
| 4 9 W      | Mar. 18 - May 23  | 47        |

**Total Instruction Days . . . . . 173**

### Secondary (6-12) Grading Periods

| Secondary | Dates             | Inst Days |
|-----------|-------------------|-----------|
| 1 6 W     | Aug. 14 - Sep. 22 | 29        |
| 2 6 W     | Sep. 25 - Nov. 3  | 26        |
| 3 6 W     | Nov. 6 - Dec. 15  | 25        |
| 4 6 W     | Jan. 3 - Feb. 16  | 32        |
| 5 6 W     | Feb. 20 - Apr. 12 | 32        |
| 6 6 W     | Apr. 15 - May 23  | 29        |

**Total Instruction Days . . . . . 173**

\*Board approved on March 21, 2023

| July |    |    |    |    |    |    | August |    |    |    |    |    |    | September |    |    |    |    |    |    | October |    |    |    |    |    |    |  |
|------|----|----|----|----|----|----|--------|----|----|----|----|----|----|-----------|----|----|----|----|----|----|---------|----|----|----|----|----|----|--|
| S    | M  | T  | W  | T  | F  | S  | S      | M  | T  | W  | T  | F  | S  | S         | M  | T  | W  | T  | F  | S  | S       | M  | T  | W  | T  | F  | S  |  |
|      |    |    |    |    |    | 1  |        |    | 1  | 2  | 3  | 4  | 5  |           |    |    |    |    | 1  | 2  | 1       | 2  | 3  | 4  | 5  | 6  | 7  |  |
| 2    | 3  | 4  | 5  | 6  | 7  | 8  | 6      | 7  | 8  | 9  | 10 | 11 | 12 | 3         | 4  | 5  | 6  | 7  | 8  | 9  | 8       | 9  | 10 | 11 | 12 | 13 | 14 |  |
| 9    | 10 | 11 | 12 | 13 | 14 | 15 | 13     | 14 | 15 | 16 | 17 | 18 | 19 | 10        | 11 | 12 | 13 | 14 | 15 | 16 | 15      | 16 | 17 | 18 | 19 | 20 | 21 |  |
| 16   | 17 | 18 | 19 | 20 | 21 | 22 | 20     | 21 | 22 | 23 | 24 | 25 | 26 | 17        | 18 | 19 | 20 | 21 | 22 | 23 | 22      | 23 | 24 | 25 | 26 | 27 | 28 |  |
| 23   | 24 | 25 | 26 | 27 | 28 | 29 | 27     | 28 | 29 | 30 | 31 | 24 | 25 | 26        | 27 | 28 | 29 | 30 | 29 | 30 | 31      |    |    |    |    |    |    |  |
| 30   | 31 |    |    |    |    |    |        |    |    |    |    |    |    |           |    |    |    |    |    |    |         |    |    |    |    |    |    |  |

| November |    |    |    |    |    |    | December |    |    |    |    |    |    | January |    |    |    |    |    |    | February |    |    |    |    |    |    |
|----------|----|----|----|----|----|----|----------|----|----|----|----|----|----|---------|----|----|----|----|----|----|----------|----|----|----|----|----|----|
| S        | M  | T  | W  | T  | F  | S  | S        | M  | T  | W  | T  | F  | S  | S       | M  | T  | W  | T  | F  | S  | S        | M  | T  | W  | T  | F  | S  |
|          |    |    | 1  | 2  | 3  | 4  |          |    |    |    |    | 1  | 2  |         | 1  | 2  | 3  | 4  | 5  | 6  |          |    |    |    | 1  | 2  | 3  |
| 5        | 6  | 7  | 8  | 9  | 10 | 11 | 3        | 4  | 5  | 6  | 7  | 8  | 9  | 7       | 8  | 9  | 10 | 11 | 12 | 13 | 4        | 5  | 6  | 7  | 8  | 9  | 10 |
| 12       | 13 | 14 | 15 | 16 | 17 | 18 | 10       | 11 | 12 | 13 | 14 | 15 | 16 | 14      | 15 | 16 | 17 | 18 | 19 | 20 | 11       | 12 | 13 | 14 | 15 | 16 | 17 |
| 19       | 20 | 21 | 22 | 23 | 24 | 25 | 17       | 18 | 19 | 20 | 21 | 22 | 23 | 21      | 22 | 23 | 24 | 25 | 26 | 27 | 18       | 19 | 20 | 21 | 22 | 23 | 24 |
| 26       | 27 | 28 | 29 | 30 | 24 | 25 | 26       | 27 | 28 | 29 | 30 | 28 | 29 | 30      | 31 | 25 | 26 | 27 | 28 | 29 |          |    |    |    |    |    |    |

| March |    |    |    |    |    |    | April |    |    |    |    |    |    | May |    |    |    |    |    |    | June |    |    |    |    |    |    |
|-------|----|----|----|----|----|----|-------|----|----|----|----|----|----|-----|----|----|----|----|----|----|------|----|----|----|----|----|----|
| S     | M  | T  | W  | T  | F  | S  | S     | M  | T  | W  | T  | F  | S  | S   | M  | T  | W  | T  | F  | S  | S    | M  | T  | W  | T  | F  | S  |
|       |    |    |    |    | 1  | 2  |       | 1  | 2  | 3  | 4  | 5  | 6  |     |    |    | 1  | 2  | 3  | 4  |      |    |    |    |    |    | 1  |
| 3     | 4  | 5  | 6  | 7  | 8  | 9  | 7     | 8  | 9  | 10 | 11 | 12 | 13 | 5   | 6  | 7  | 8  | 9  | 10 | 11 | 2    | 3  | 4  | 5  | 6  | 7  | 8  |
| 10    | 11 | 12 | 13 | 14 | 15 | 16 | 14    | 15 | 16 | 17 | 18 | 19 | 20 | 12  | 13 | 14 | 15 | 16 | 17 | 18 | 9    | 10 | 11 | 12 | 13 | 14 | 15 |
| 17    | 18 | 19 | 20 | 21 | 22 | 23 | 21    | 22 | 23 | 24 | 25 | 26 | 27 | 19  | 20 | 21 | 22 | 23 | 24 | 25 | 16   | 17 | 18 | 19 | 20 | 21 | 22 |
| 24    | 25 | 26 | 27 | 28 | 29 | 30 | 28    | 29 | 30 | 26 | 27 | 28 | 29 | 30  | 31 | 23 | 24 | 25 | 26 | 27 | 28   | 29 | 30 |    |    |    |    |

**Legend**

- Student and Staff Holiday
- Staff Development and Student Holiday
- Workday/Student Holiday
- Teacher DMA Day and Student Holiday
- Six/Nine Weeks Begins/Ends
- ▲ New Teacher Staff Development Day
- ▶ Early Release Day - All Students

# Important Contacts

**Principal**

Dr. Serena Morris-Williams  
serena.williams@lcisd.org  
(832) 223-2000

**Counselor**

Martha Teal  
martha.teal@lcisd.org  
(832) 223-2005

**Administrative Assistant**

Susan Evans  
sbevans@lcisd.org  
(832) 223-2003

**Cafeteria Manager**

Marydel Martinez  
mmartinez001@lcisd.org  
(832) 223-2008

**Meyer Elementary**

Campus Phone:

(832) 223-2000

Campus Fax:

(832) 223-2001



**Assistant Principal**

Amber Raabe  
amber.raabe@lcisd.org  
(832) 223-2000

**Nurse**

Nicole Merta  
nmerta@lcisd.org  
(832) 223-2006

**Clerk**

Gracey Ortega  
gortega@lcisd.org  
(832) 223-2000

**LCISD Transportation Dept.**

(832) 223-0280  
Option 1

# 2023-2024 ELEMENTARY SCHOOL SUPPLY LIST

## PRE-KINDERGARTEN

- 3 Boxes Tissue (200 ct)
- 1 8 oz. Hand Sanitizer
- 1 5" x 8" Plastic School Box
- 2 Boxes Crayons (24 ct)
- 1 Box Wide Washable Markers (8-10 ct)
- 4 Dry Erase Markers
- 1 Pkg, #2 Pencils (12 ct)
- 1 4 oz. Bottle White Glue
- 4 Large Glue Sticks
- 1 Pair Blunt Nosed Metal Scissors
- 2 Pkg. Manila Paper 9 x 12 in
- 1 Pkg. Multi-Color Construction Paper 9 x 12 in
- 1 Solid Colored (3) Brad Plastic Pocket Folder
- 1 Primary Composition Book
- 1 Pair of Over the Ear Headphones
- 1 Box Ziploc Bags (Quart)
- 1 Box Ziploc Bags (Gallon)
- 1 Pkg. Baby Wipes

## KINDERGARTEN

- 3 Boxes Tissue (200 ct)
- 1 8 oz. Hand Sanitizer
- 1 5" x 8" Plastic School Box
- 4 Boxes Crayons (24 ct)
- 1 Box Wide Washable Markers (8-10 ct)
- 6 Dry Erase Markers
- 4 Pkg, #2 Pencils (12 ct)
- 1 4 oz. Bottle White Glue
- 10 Large Glue Sticks
- 1 Pair Blunt Nosed Metal Scissors
- 2 Pkg. Manila Paper 9 x 12 in
- 1 Pkg. Multi-Color Construction Paper 9 x 12 in
- 1 Solid Colored (3) Brad Plastic Pocket Folder
- 3 Primary Journal Composition, 100 sheets, 7.5" x 9.8" MEA 09554
- 2 Composition Books, 100 Sheets, 7.5" x 9.75"
- 2 Large Erasers
- 1 Pair of Over the Ear Headphones
- 1 Box Ziploc Bags (Quart)
- 1 Box Ziploc Bags (Gallon)

## FIRST GRADE

- 3 Boxes Tissue (200 ct)
- 1 8 oz. Hand Sanitizer
- 1 5" x 8" Plastic School Box
- 4 Boxes Crayons (24 ct)
- 1 Box Wide Washable Markers (8-10 ct)
- 6 Dry Erase Markers (fine tip)
- 4 Pkg, #2 Pencils (12 ct)
- 1 4 oz. Bottle White Glue
- 10 Large Glue Sticks
- 1 Small Sharp Pointed Pair Metal Scissors
- 1 Pkg. Manila Paper 9x12 in

- 1 Pkg. Multi-Color Construction Paper 9 x 12 in
- 4 Solid Colored (3) Brad Plastic Pocket Folder
- 6 Composition Books, 100 Sheets, 7.5" x 9.75"
- 2 Large Erasers
- 1 Pair of Over the Ear Headphones
- 1 Box Ziploc Bags (Quart)
- 1 Box Ziploc Bags (Gallon)

## SECOND GRADE

- 3 Boxes Tissue (200 ct)
- 1 8 oz. Hand Sanitizer
- 1 5" x 8" Plastic School Box
- 3 Boxes Crayons (24 ct)
- 1 Box Wide Washable Markers (8-10 ct)
- 6 Dry Erase Markers (fine tip)
- 4 Pkg, #2 Pencils (12 ct)
- 1 Box of Colored Pencils
- 1 4 oz. Bottle White Glue
- 10 Large Glue Sticks
- 1 Small Sharp Pointed Pair Metal Scissors
- 1 Pkg. Manila Paper 9 x 12 in
- 1 Pkg. Notebook Paper (200 ct Wide Ruled)
- 6 Solid Colored (3) Brad Plastic Pocket Folder
- 6 Composition Books, 100 Sheets, 7.5" x 9.75"
- 2 Large Erasers
- 1 Ruler
- 1 Pair of Over the Ear Headphones
- 1 Box Ziploc Bags (Quart)
- 1 Box Ziploc Bags (Gallon)

## THIRD GRADE

- 3 Boxes Tissue (200 ct)
- 1 8 oz. Hand Sanitizer
- 1 Heavy Duty Pencil Bag with Binder Holes
- 2 Boxes Crayons (24 ct)
- 1 Box Wide Washable Markers (8-10 ct)
- 6 Dry Erase Markers (fine tip)
- 4 Pkg, #2 Pencils (12 ct)
- 1 Box of Colored Pencils
- 1 Pkg. Multi-Colored Pens (8 Pack)
- 2 Highlighters
- 8 Large Glue Sticks
- 1 Small Sharp Pointed Pair Metal Scissors
- 1 Pkg. Manila Paper 9 x 12 in
- 1 Pkg. Multi-Color Construction Paper 9 x 12 in
- 2 Pkg. Notebook Paper (200 ct Wide Ruled)
- 1 Pkg. 100 Sheet 8" x 11" (1/2" Rule Graph Paper)
- 6 Solid Colored (3) Brad Plastic Pocket Folder
- 6 Composition Books, 100 Sheets, 7.5" x 9.75"
- 1 Ruler
- 1 Pair of Wired Ear Buds
- 1 Box Ziploc Bags (Quart)
- 1 Box Ziploc Bags (Gallon)

## FOURTH GRADE

- 3 Boxes Tissue (200 ct)
- 1 8 oz. Hand Sanitizer
- 1 Heavy Duty Pencil Bag with Binder Holes
- 2 Boxes Crayons (24 ct)
- 1 Box Wide Washable Markers (8-10 ct)
- 6 Dry Erase Markers (fine tip)
- 4 Pkg, #2 Pencils (12 ct)
- 1 Box of Colored Pencils
- 1 Pkg. Multi-Colored Pens (8 Pack)
- 2 Highlighters
- 8 Large Glue Sticks
- 1 Small Sharp Pointed Pair Metal Scissors
- 1 Pkg. Multi-Color Construction Paper 9 x 12 in
- 2 Pkg. Notebook Paper (200 ct Wide Ruled)
- 1 Pkg. 100 Sheet 8" x 11" (1/2" Rule Graph Paper)
- 6 Solid Colored (3) Brad Plastic Pocket Folder
- 6 Composition Books, 100 Sheets, 7.5" x 9.75"
- 1 Ruler
- 1 Dividers with tabs (6 tabs)
- 1 1 inch 3 Ring Binder w/cover sleeve
- 1 Pair of Wired Ear Buds
- 1 Box Ziploc Bags (Quart)
- 1 Box Ziploc Bags (Gallon)
- 1 One Piece Swim Suit (Swim Program)

## FIFTH GRADE

- 3 Boxes Tissue (200 ct)
- 1 8 oz. Hand Sanitizer
- 1 Heavy Duty Pencil Bag with Binder Holes
- 2 Boxes Crayons (24 ct)
- 1 Box Wide Washable Markers (8-10 ct)
- 6 Dry Erase Markers
- 4 Pkg, #2 Pencils (12 ct)
- 2 Box of Colored Pencils
- 1 Pkg. Multi-Colored Pens (8 Pack)
- 2 Highlighters
- 6 Large Glue Sticks
- 1 Small Sharp Pointed Pair Metal Scissors
- 2 Pkg. Notebook Paper (200 ct Wide Ruled)
- 1 Pkg. 100 Sheet 8" x 11" (1/2" Rule Graph Paper)
- 6 Solid Colored (3) Brad Plastic Pocket Folder
- 6 Composition Books, 100 Sheets, 7.5" x 9.75"
- 1 Ruler
- 1 Dividers with Tabs (6 tabs)
- 1 1" 3-Ring Binder with Cover Sleeve
- 1 Pair of Wired Ear Buds
- 1 Box Ziploc Bags (Quart)
- 1 Box Ziploc Bags (Gallon)

**LAMAR**CISD

A PROUD TRADITION | A BRIGHT FUTURE

# Meyer Elementary

## Uniform Dress Code

### Shirts:

- Brand names larger than two inches are not permitted.
- Solid collared shirts or blouses in any color (short or long sleeves, as well as turtlenecks.)
- Solid appropriate-sized sweatshirts, worn alone or over a uniform shirt.
- Solid colored undershirts may be worn under uniform tops.
- Only Meyer t-shirts, Boy/Girl Scout shirts, or school-related t-shirts are allowed.
- Shirts must be an appropriate length so that they are tucked in at all times. Exception: sweatshirts or sweaters with waistbands.
- College t-shirts may be worn on designated college days.
- No hoodies will be worn inside the building.

### Shorts / Pants / Skorts / Jumpers / Skirts:

- Brand names larger than two inches are not permitted.
- Khaki, navy blue, or black uniform or jean bottoms. Side pockets are acceptable.
- Khaki, navy blue, or black jumpers, skirts or capris that are appropriately sized. Side pockets are acceptable.
- Khaki, navy blue, red, white, or black tights or leggings may be worn under uniform bottoms.
- No cut-off style shorts.
- Shorts, skirts, and skorts must be fingertip-length or longer and be appropriately sized. All must be worn at the waist, which is defined as the top of the hip bones.
- Regular or cargo style jeans – blue, black, and khaki-colored are acceptable.
- No wide legs or cut slits in bottom-sides of pants. No holes in jeans. No shredded-style jeans.
- Oversized pants are not permitted. Extremely long pants that cover the shoes or have frayed hems which pose a trip hazard are not permitted.
- Sweatpants, wind pants, athletic pants, and jeggings must be appropriately sized and must not present a hazard or distraction.
- Pants, slacks, and shorts may not be made of inappropriate form-fitting materials or made of see-through/sheer material.

### Shoes:

- No backless shoes or heelies.
- Shoes with laces must be laced and tied at all times.
- Girls are discouraged from wearing high-heel shoes.

### Jewelry:

- Girls may wear earrings that do not cause distraction or hazards.
- Oversized jewelry such as large necklaces or bracelets are not permitted.

### Hair:

- Hair must be clean, well-groomed, and out of the eyes, and shall be a non-distracting hair color that is styled in a way that is neither distracting nor conspicuous.
- Hair styles that create a safety hazard or a material/substantial disruption are not permitted.
- Extremes in hairstyles, psychedelic colors, letters or designs shaved in head, are not allowed.



# Meyer Elementary Nurse's Notes

## 2023-2024

I am so excited that you will be joining the Meyer Elementary family for the 2023-2024 school year. I wanted to put together a few helpful reminders for you as you get ready for the school year. All this information is also on the Meyer Elementary website.

1. I will be reviewing immunization records throughout the summer and will be contacting you if there are any missing immunizations.
2. Eating a healthy breakfast is a key part of your child's school success. Please make sure your child eats at home or arrives at school in time to eat breakfast before class begins. Breakfast is served until 7:40 AM.
3. If your child is experiencing headaches, vomiting, diarrhea, chills, shortness of breath, loss of taste and smell, fever, coughing, sore throat, or muscle ache/pain:
  - a. You may get your child tested for Covid. If the Covid test comes back negative, the student can return to school as long as no vomiting, diarrhea, or fever is present. If Covid test is positive: your student may return on the 8<sup>th</sup> day from the day symptoms started or the date the Covid test was positive. CDC guidelines may change for school year 23-24.
  - b. Children must be **free of fever (less than 100.0 degrees) for 24 hours** without the use of fever reducing medications (such as Tylenol or Advil / Motrin) before returning to school. Children must be free of diarrhea for 24 hours before returning to school and need to be eating and drinking without any problem. If a child vomits two or more times within 24 hours, they will need to stay home for at least 24 hours to ensure they are not contagious.
  - c. Please call the school nurse if your child has been diagnosed with a contagious condition such as pink eye, strep throat, chicken pox, head lice, impetigo, ringworm, flu or has vomiting and/or diarrhea.
4. Children **are not permitted** to carry medication including cough drops. **ALL** MEDICATION must be administered from the clinic. Over the counter medication for less than 6 weeks **must be accompanied by a note from the parent** authorizing administration of the medication, reason and dose, time and amount. Parents must deliver the medication to the clinic and bring only the necessary amount for school. ALL medication must be in the original container. All prescription medication must be in the original pharmacy container with the child's name, medication date and dosing instructions.
5. Forms for Medications, that will be administered at school during the day, can be found on Meyer website. If you need any assistance, please contact me.
6. When it comes time to fill out the **Beginning of Year Forms**, please make sure to read the Health Information and Emergency Consent Documents clearly and address any health issues that your child might have. This helps to ensure that we can keep them healthy at school.
7. Please ensure that you **keep your contact information updated** in the Skyward Family Access system. There is nothing worse than your child not feeling well and me being unable to reach you.
8. We ask that **ALL** students keep a change of clothes in their backpack, in the event of an incontinent accident, soiled from food or falling in mud: we want to be prepared.



# IMPORTANT INFORMATION

## Lamar CISD Child Nutrition Free/Reduced On-line Meals Application 2023-2024

The Child Nutrition Department will be accepting on-line applications for the 2023-2024 Free/Reduced Meals Program. Parents/Guardian can apply on-line at [www.schoolcafe.com](http://www.schoolcafe.com) beginning August 7, 2023.

Students attending the following CEP schools DO NOT need to submit an on-line application for 2023-2024: ALC, Arredondo, Austin, Beasley, Bowie, Culver, George Jr. High, Hutchison, Jackson, Jane Long, JJAEP, Lamar High, Lamar Jr. High, Meyer, Navarro, Pink, Randle High, Seguin, Smith, Taylor Ray, Terry High, Travis, Velasquez, Wessendorff, Williams, Wright Jr. High. All students on these campuses are eligible for Free breakfast and Free lunch, with NO APPLICATION.

\*\*\*\*\*

**HOUSEHOLDS MUST FILL OUT AN ON-LINE APPLICATION FOR ELEMENTARY, MIDDLE (6<sup>TH</sup>), JR. HIGH (7<sup>TH</sup> & 8<sup>TH</sup>) AND HIGH SCHOOLS (9<sup>th</sup> thru 12<sup>th</sup>) NOT LISTED ABOVE TO DETERMINE IF YOUR CHILD QUALIFIES FOR FREE OR REDUCED-PRICED SCHOOL MEALS.**

\*\*\*\*\*

**If Parents/Guardian have questions regarding the on-line process, they can contact the Child Nutrition Department for assistance at 832-223-0180.**

In accordance with federal civil rights law and U.S. Department of Agriculture (USDA) civil rights regulations and policies, this institution is prohibited from discriminating on the basis of race, color, national origin, sex (including gender identity and sexual orientation), disability, age, or reprisal or retaliation for prior civil rights activity. Program information may be made available in languages other than English. Persons with disabilities who require alternative means of communication to obtain program information (e.g., Braille, large print, audiotape, American Sign Language), should contact the responsible state or local agency that administers the program or USDA's TARGET Center at (202) 720-2600 (voice and TTY) or contact USDA through the Federal Relay Service at (800) 877-8339. To file a program discrimination complaint, a Complainant should complete a Form AD-3027, USDA Program Discrimination Complaint Form which can be obtained online at: [https://www.usda.gov/sites/default/files/documents/USDA-OASCR%20P-Complaint-Form-0508-0002-508-11-28-](https://www.usda.gov/sites/default/files/documents/USDA-OASCR%20P-Complaint-Form-0508-0002-508-11-28-17Fax2Mail.pdf)

[17Fax2Mail.pdf](https://www.usda.gov/sites/default/files/documents/USDA-OASCR%20P-Complaint-Form-0508-0002-508-11-28-17Fax2Mail.pdf), from any USDA office, by calling (866) 632-9992, or by writing a letter addressed to USDA. The letter must contain the complainant's name, address, telephone number, and a written description of the alleged discriminatory action in sufficient detail to inform the Assistant Secretary for Civil Rights (ASCR) about the nature and date of an alleged civil rights violation. The completed AD-3027 form or letter must be submitted to USDA by: **mail:**

U.S. Department of Agriculture  
Office of the Assistant Secretary for Civil Rights  
1400 Independence Avenue, SW  
Washington, D.C. 20250-9410; or **fax:** (833) 256-1665 or (202) 690-7442; or **email:**  
[program.intake@usda.gov](mailto:program.intake@usda.gov)

This institution is an equal opportunity provider.

# AVISO IMPORTANTE

## DEPARTAMENTO DE SERVICIOS DE ALIMENTOS GRATIS Y DE BAJO COSTO POR LÍNEA PARA EL CICLO ESCOLAR 2023-2024 EN LAMAR CISD

El Departamento de Nutrición Infantil estará aceptando solicitudes en línea para el Programa de Almuerzo Gratis y de Bajo Costo para el ciclo escolar 2023-2024. Los padres podrán comenzar a llenar la solicitud en línea en [www.schoolcafe.com](http://www.schoolcafe.com) a partir del 7 de agosto de 2023.

Los estudiantes que asisten a las siguientes escuelas CEP **NO NECESITAN** la solicitud en línea para el ciclo escolar 2023-2024: ALC, Arredondo, Austin, Beasley, Bowie, Culver, George Jr. High, Hutchison, Jackson, Jane Long, JJAEP, Lamar High, Lamar Jr. High, Meyer, Navarro, Pink, Randle High, Seguin, Smith, Taylor Ray, Terry High, Travis, Velasquez, Wessendorff, Williams, Wright Jr. High. Los estudiantes de estas escuelas son elegibles para el desayuno y almuerzo gratuito y por lo tanto **NO** necesitan solicitud.

\*\*\*\*\*

**CADA HOGAR DEBE LLENAR UNA SOLICITUD EN LÍNEA SI SU ESCUELA PRIMARIA, INTERMEDIA, SECUNDARIA Y PREPARATORIA (DEL 6º AL 12º GRADO) NO SE ENCUENTRA EN LA LISTA DE ARRIBA. SE DEBE LLENAR UNA SOLICITUD PARA DETERMINAR SI SU HIJO CALIFICA PARA OBTENER EL SERVICIO DE ALIMENTOS ESCOLARES GRATIS O DE BAJO COSTO.**

\*\*\*\*\*

**Los padres o tutores que tengan preguntas sobre la solicitud en línea pueden comunicarse con el Departamento de Nutrición Infantil al 832-223-0180.**

**Para todos los demás programas de asistencia de nutrición del FNS, agencias estatales o locales y sus subreceptores, deben publicar la siguiente Declaración de No Discriminación:** De acuerdo con la ley federal de derechos civiles y las normas y políticas de derechos civiles del Departamento de Agricultura de los Estados Unidos (USDA), esta entidad está prohibida de discriminar por motivos de raza, color, origen nacional, sexo (incluyendo identidad de género y orientación sexual), discapacidad, edad, o represalia o retorsión por actividades previas de derechos civiles. La información sobre el programa puede estar disponible en otros idiomas que no sean el inglés. Las personas con discapacidades que requieren medios alternos de comunicación para obtener la información del programa (por ejemplo, Braille, letra grande, cinta de audio, lenguaje de señas americano (ASL), etc.) deben comunicarse con la agencia local o estatal responsable de administrar el programa o con el Centro TARGET del USDA al (202) 720-2600 (voz y TTY) o comuníquese con el USDA a través del Servicio Federal de Retransmisión al (800) 877-8339. Para presentar una queja por discriminación en el programa, el reclamante debe llenar un formulario AD-3027, formulario de queja por discriminación en el programa del USDA, el cual puede obtenerse en línea en: <https://www.fns.usda.gov/sites/default/files/resource-files/usda-program-discrimination-complaint-form-spanish.pdf>, de cualquier oficina de USDA, llamando al (866) 632-9992, o escribiendo una carta dirigida a USDA. La carta debe contener el nombre del demandante, la dirección, el número de teléfono y una descripción escrita de la acción discriminatoria alegada con suficiente detalle para informar al Subsecretario de Derechos Civiles (ASCR) sobre la naturaleza y fecha de una presunta violación de derechos civiles. El formulario AD-3027 completado o la carta debe presentarse a USDA por:

- (1) correo:  
U.S. Department of Agriculture  
Office of the Assistant Secretary for Civil Rights 1400 Independence Avenue, SW  
Washington, D.C. 20250-9410; or
- (2) fax: (833) 256-1665 o (202) 690-7442; o
- (3) correo electrónico: [program.intake@usda.gov](mailto:program.intake@usda.gov)

Esta entidad es un proveedor que brinda igualdad de oportunidades.



RIGHT AT  
SCHOOL

on-site at your school

# AFTER SCHOOL



a place to  
**BE A  
KID!**

**Register Now for Fall 2023!**

**LEARN. PLAY. GROW.**

**Right At School is your community's trusted provider of before & after school enrichment.**

Our mission is to inspire a love of learning in kids, support schools, and give parents (like you!) peace of mind.

- ✓ 180+ hands-on learning activities
- ✓ Daily homework support
- ✓ Team sports & classic playground games
- ✓ Activities designed to build lifelong social and emotional skills
- ✓ Student-led community service projects
- ✓ Music, art, drama, and so much more!

**RAS.NEWS/REGISTER**



**DISCOUNTS & FINANCIAL ASSISTANCE AVAILABLE!**

Visit our website to find out if you're eligible.

Follow us:    

# Right At School Program Pricing

## After School

5 Days / Week \$289/month

4 Days / Week \$262/month

3 Days / Week \$229/month

2 Days / Week \$171/month

1 Day / Week \$105/month

## Flexible Options

Drop-In After School: \$30

Non-School Day: \$30

10 Day Punch Card: \$270

## Discounts

Siblings: 10%

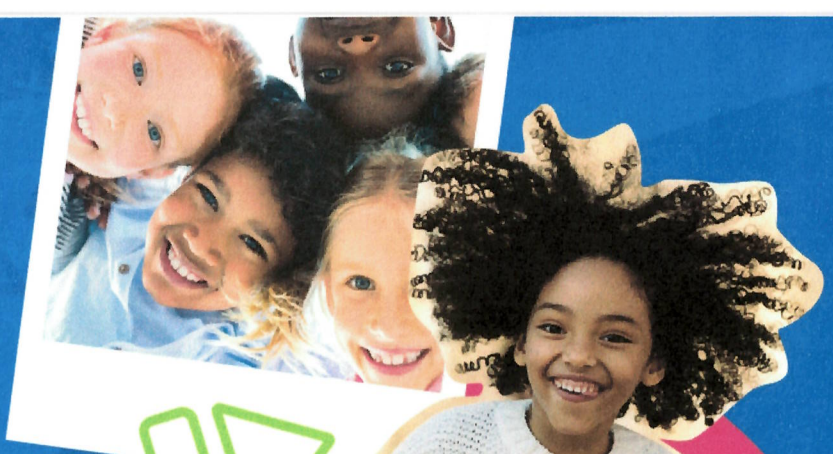
Free and Reduced Lunch: 25%

MISD Employees: 50%

Registration Fee: \$50



RIGHT AT  
SCHOOL



En el sitio de su escuela

# PROGRAMA DE DESPUES DE ESCUELA

Regístrese Ahora para 2023

APRENDER. JUGAR. CRECER.

¡Un lugar para ser un NIÑO!

**Right At School es el proveedor de confianza de su comunidad para el enriquecimiento antes y después de la escuela.**

Nuestra misión es inspirar el amor por el aprendizaje en los niños, apoyar a las escuelas y dar tranquilidad a los padres (¡como usted!).

- ✓ 180+ Actividades de aprendizaje
- ✓ Apoyo con la tarea
- ✓ Juegos y deportes clásicos
- ✓ Actividades diseñadas para desarrollar habilidades sociales
- ✓ Servicio comunitario dirigidos por estudiantes
- ✓ Música, arte, teatro, y mucho más!

**RAS.NEWS/REGISTER**

**¡DESCUENTOS Y ASISTENCIA FINANCIERA DISPONIBLE!**

Visita nuestra web para saber si puedes acceder.



Síguenos:



**We are excited to announce that Lamar CISD & Right at School will be offering an on-campus daycare option for the 2023-2024 school year. Please see attached flyers for details.**

American Heritage Academy  
(281) 762-1085

Kidzville Learning Academy  
(832) 595-0543

Game Gymnastics  
(281) 232-3100

Kindercare Child Care Centers  
(281) 341-6447

Gingerbread House Day Care  
(281) 239-2110

Kingdom Kids  
(281) 725-8233

Good Beginnings  
(281) 232-9166

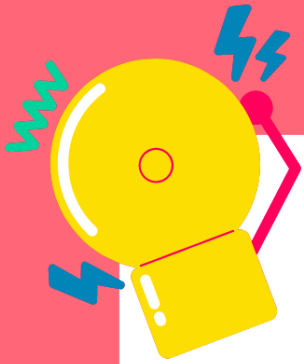
Noah's Little Ark  
(281) 232-6624

Infinite Learning Academy  
(832) 773-4697

Tiny Toons Childcare & Learning Center  
(832) 497-1311

Kids 'R' Kids  
(281) 454-3604

*This flyer is intended for informational purposes only. The organizations listed above are not related to or sponsored by Meyer Elementary or Lamar Consolidated ISD.*



# Like Our Meyer Elementary Facebook Page!





Dear Parents,

The SMART tag system helps increase safety and security for students riding on a school bus, leveraging technology to improve student management and communications on school buses.

SMART tag monitors student loading and unloading, providing real-time information to the Transportation Department, and you, the parent.

### SMART tag will help...

- increase driver, school, and parent awareness
- ensure riders will load on the right bus and unload at the right stop
- maximize rider safety and security
- enable drivers to efficiently and effectively carry out their duties
- ensure Special Education and Pre-K students are released to authorized guardians.\*

### SMART tag Parent Portal

- SMART Alerts – sign up for SMART Alerts and receive emails or text messages when your child is approximately 10-15 minutes from their stop.
- SMART Locate – allows parents to view a map showing the bus as their child is being transported.
- Authorized guardian release feature. This tool allows parents to update authorized guardians through the Parent Portal.\*

### Make sure to register!

Go to [parent.smart-tag.net](http://parent.smart-tag.net) and register to take advantage of the SMART tag Parent Features. If you are using a smart phone, you will be prompted to save the web app to your home screen. This will place the Parent App tile on your mobile device for easy access.

For more information about SMART tag, please visit our website at [www.smart-tag.net](http://www.smart-tag.net).

\* These are district configurable options

## How it Works

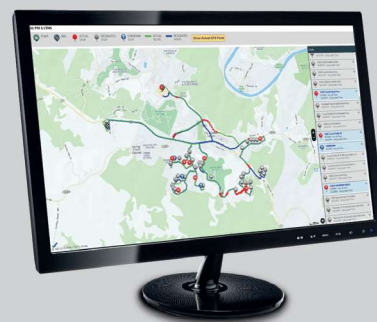


### Student ID

Students are issued a Radio Frequency Identification (RFID) SMART tag ID. RFID technology is a newer technology that is replacing bar codes in many industries such as medical (patient, equipment & supplies tracking), libraries (book tracking), and even amusement park access (Disney World now uses RFID wristbands). These IDs communicate with the driver tablets. No student info is stored on the tag.

### Bus Tablet

SMART tag school buses are equipped with a tablet computer and RFID reader. When loading and unloading a bus, riders present their ID onto the reader. The tablet will display if the rider is boarding the correct bus, and if they are getting off at their correct stop.

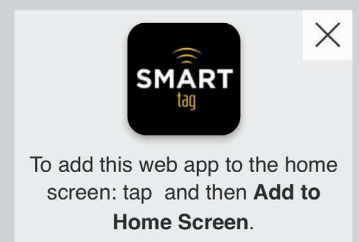


### Transportation Administration

When bus activity begins, rider info is immediately available for the transportation administrators, so they can oversee all school bus activity.

### Parent App

An online Parent Portal may be accessed at [parent.smart-tag.net](http://parent.smart-tag.net). On your iOS or Android smartphone you can save as web app to your home screen for easy access.





## WHAT YOU WILL NEED

- The campus name for your child
- Your child's student ID#
- Your child's date of birth

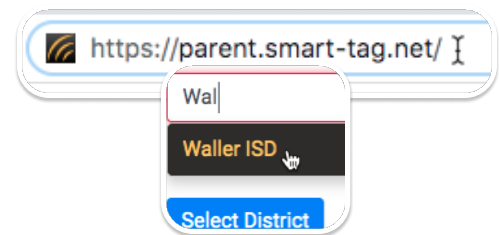
\*

You only need to register for one child. If you have multiple children, the system will attempt to add them to your account

## FOLLOW THESE STEPS:

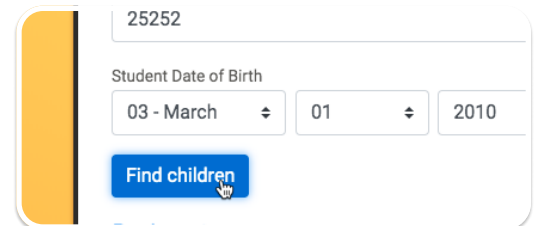
1

- On your phone or computer, go to [parent.smart-tag.net](https://parent.smart-tag.net)
- Select **Lamar CISD** as your School District



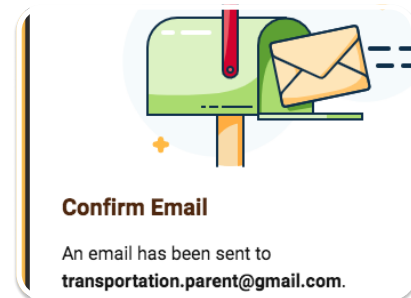
2

- Click **Register**, then **Begin registration**
- Enter the campus name, student ID# and date of birth for (1) of your children, then click **Find Children** and then **These are my children**



3

- Enter the email you would like to use for your account and setup a password. Click **Send Confirmation Code**
- Check your email for your registration link. **Click the link** at the bottom of your email
- In your web browser, **Click Submit**



 **That's it! You can now log into your account!**