

Campus Climate Survey

2020-2021 Survey Results – Staff

Leaman Junior High

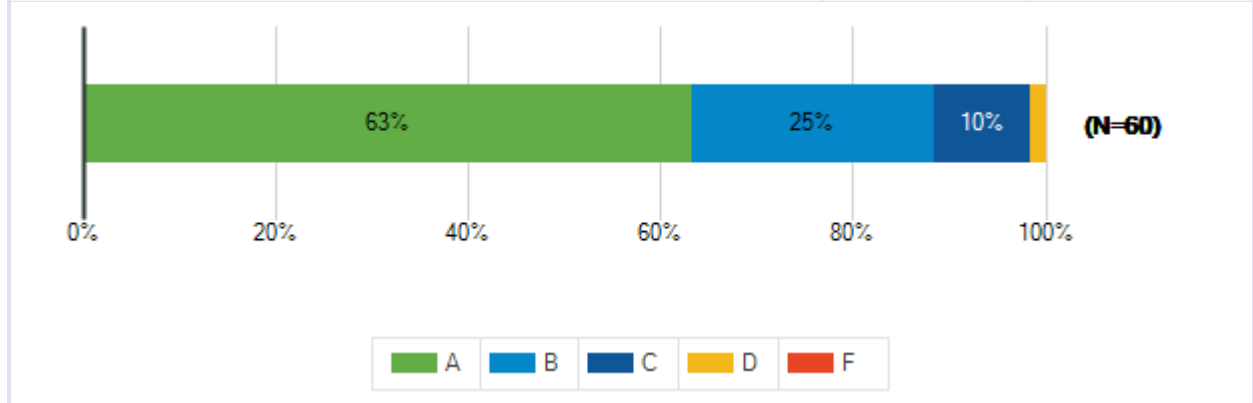
Lamar Consolidated ISD
November 30 - December 20, 2020



Lamar Consolidated ISD
2020-2021 Campus Climate Survey

Students receive grades of A, B, C, D or F to report the quality of their work. What grade would you give the overall quality of your school? On this scale, A represents outstanding, C is average and F is failing.

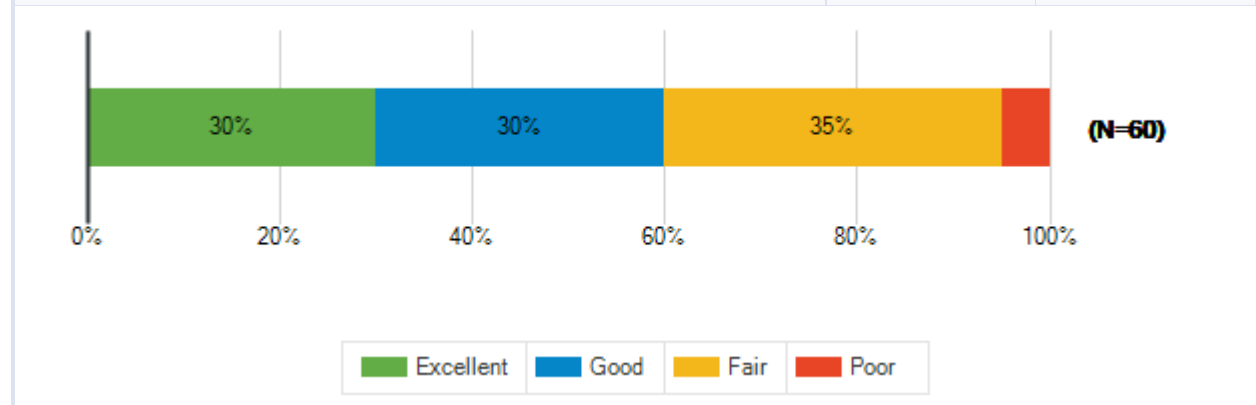
Responses	Count	%
A	38	63%
B	15	25%
C	6	10%
D	1	2%
F	0	0%
Total Responses	60	



Lamar Consolidated ISD
2020-2021 Campus Climate Survey

Overall, how would you rate how Lamar CISD handled the COVID-19 pandemic for the 2020-2021 school year?

Responses	Count	%
Excellent	18	30%
Good	18	30%
Fair	21	35%
Poor	3	5%
Total Responses	60	



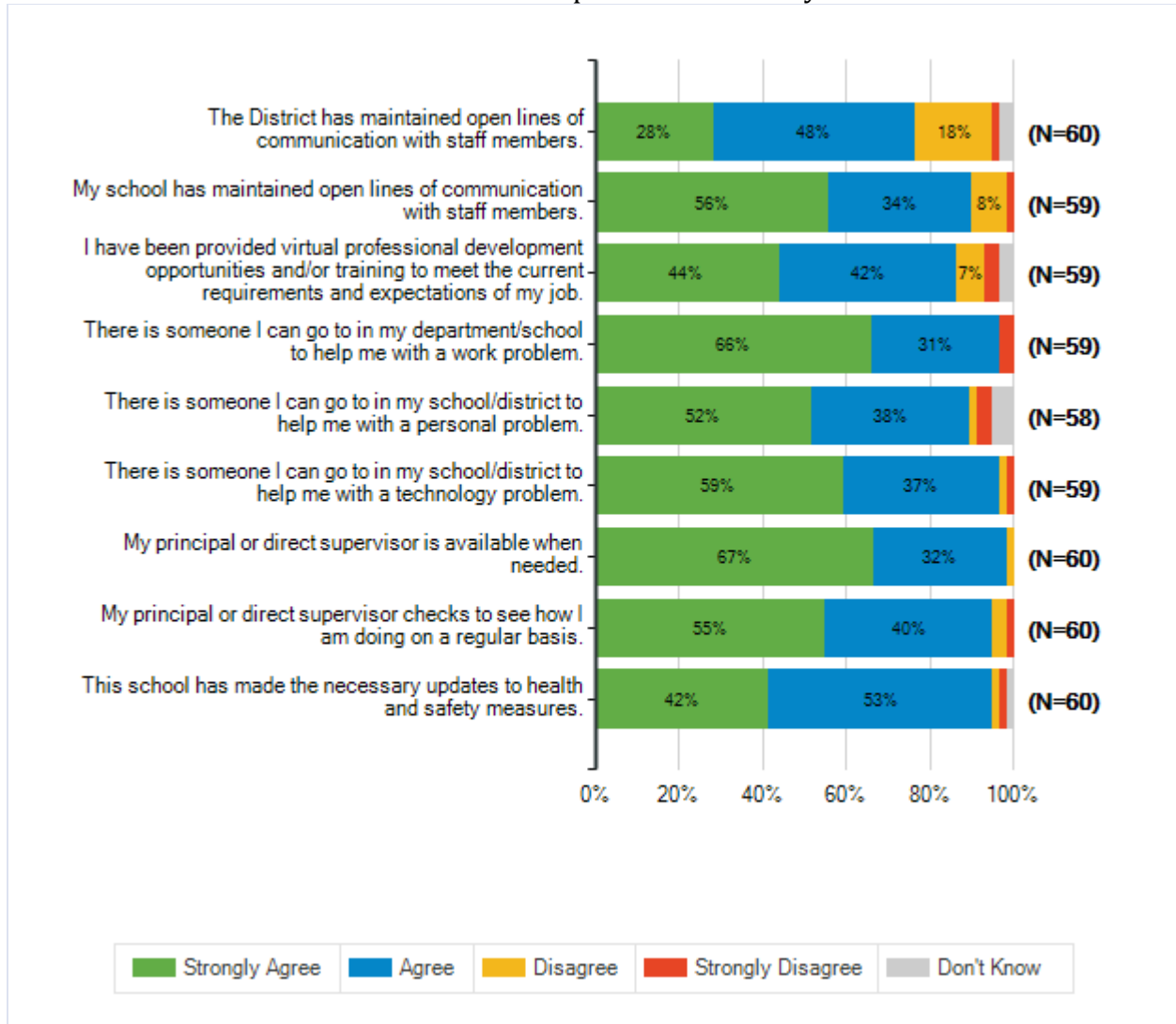
Lamar Consolidated ISD
2020-2021 Campus Climate Survey

Below are statements about the management of the COVID-19 pandemic. As you respond, please think about your experiences this school year.

How strongly do you agree or disagree with each of the following statements?

		Strongly Agree	Agree	Disagree	Strongly Disagree	Don't Know	Total Responses
	The District has maintained	17	29	11	1	2	
(a)	open lines of communication with staff members.	28%	48%	18%	2%	3%	60
	My school has maintained	33	20	5	1	0	
(b)	open lines of communication with staff members.	56%	34%	8%	2%	0%	59
	I have been provided virtual professional development opportunities and/or training to meet the current requirements and expectations of my job.	26	25	4	2	2	
(c)		44%	42%	7%	3%	3%	59
	There is someone I can go to	39	18	0	2	0	
(d)	in my department/school to help me with a work problem.	66%	31%	0%	3%	0%	59
	There is someone I can go to	30	22	1	2	3	
(e)	in my school/district to help me with a personal problem.	52%	38%	2%	3%	5%	58
	There is someone I can go to in my school/district to help me with a technology problem.	35	22	1	1	0	
(f)		59%	37%	2%	2%	0%	59
	My principal or direct supervisor is available when needed.	40	19	1	0	0	
(g)		67%	32%	2%	0%	0%	60
	My principal or direct supervisor checks to see how I am doing on a regular basis.	33	24	2	1	0	
(h)		55%	40%	3%	2%	0%	60
	This school has made the necessary updates to health and safety measures.	25	32	1	1	1	
(i)		42%	53%	2%	2%	2%	60

Lamar Consolidated ISD
2020-2021 Campus Climate Survey



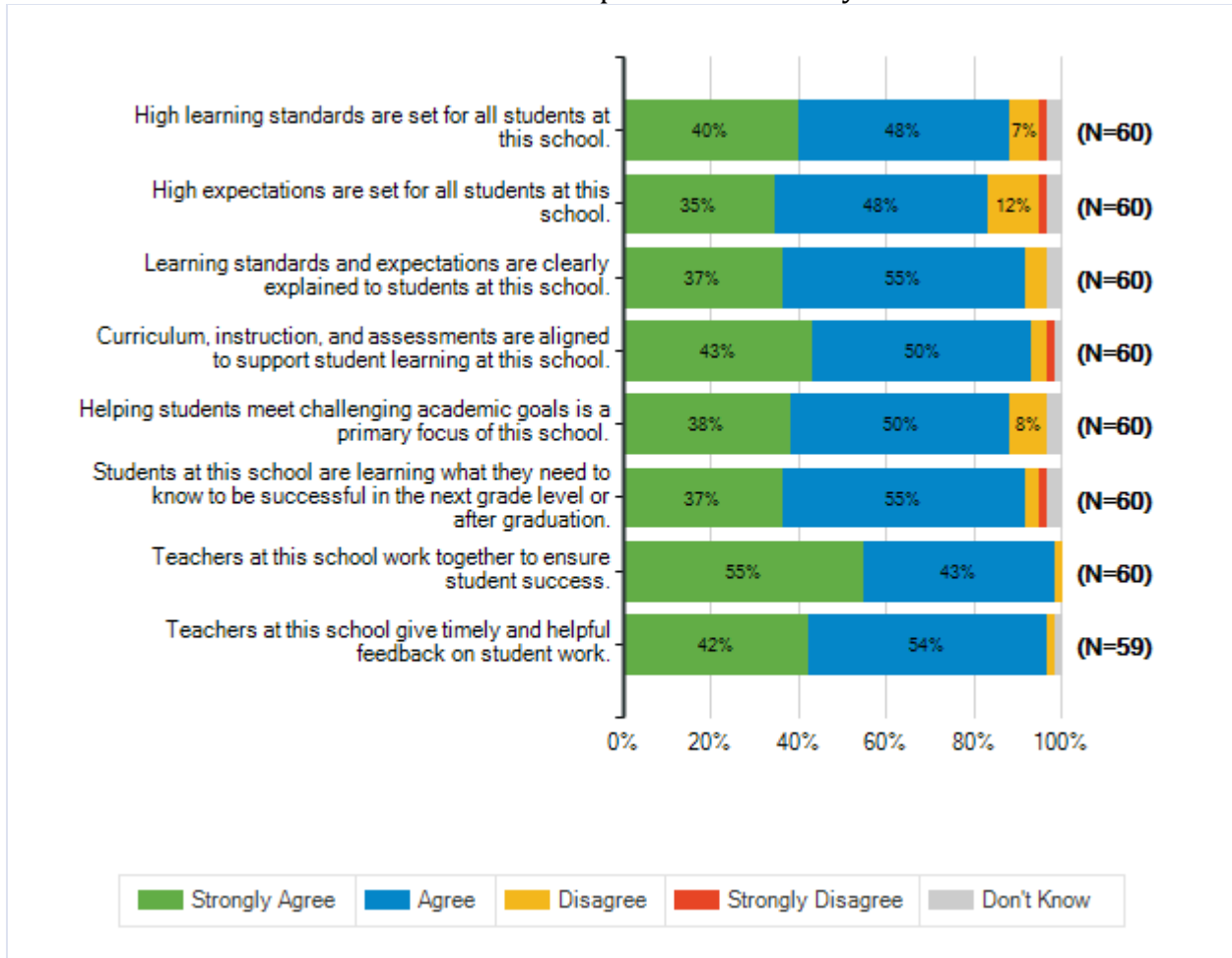
Lamar Consolidated ISD
2020-2021 Campus Climate Survey

Below are statements about the quality of education your students receive at this school. As you respond, please think about your experiences this school year.

How strongly do you agree or disagree with each of the following statements?

		Strongly Agree	Agree	Disagree	Strongly Disagree	Don't Know	Total Responses
	High learning standards are set for all students at this school.	24	29	4	1	2	60
(a)	High expectations are set for all students at this school.	40%	48%	7%	2%	3%	60
	Learning standards and expectations are clearly explained to students at this school.	22	33	3	0	2	60
(c)	Curriculum, instruction, and assessments are aligned to support student learning at this school.	43%	50%	3%	2%	2%	60
(d)	Helping students meet challenging academic goals is a primary focus of this school.	38%	50%	8%	0%	3%	60
	Students at this school are learning what they need to know to be successful in the next grade level or after graduation.	22	33	2	1	2	60
(f)	Teachers at this school work together to ensure student success.	33	26	1	0	0	60
(g)	Teachers at this school give timely and helpful feedback on student work.	55%	43%	2%	0%	0%	60
		25	32	1	0	1	59
(h)		42%	54%	2%	0%	2%	59

Lamar Consolidated ISD
2020-2021 Campus Climate Survey



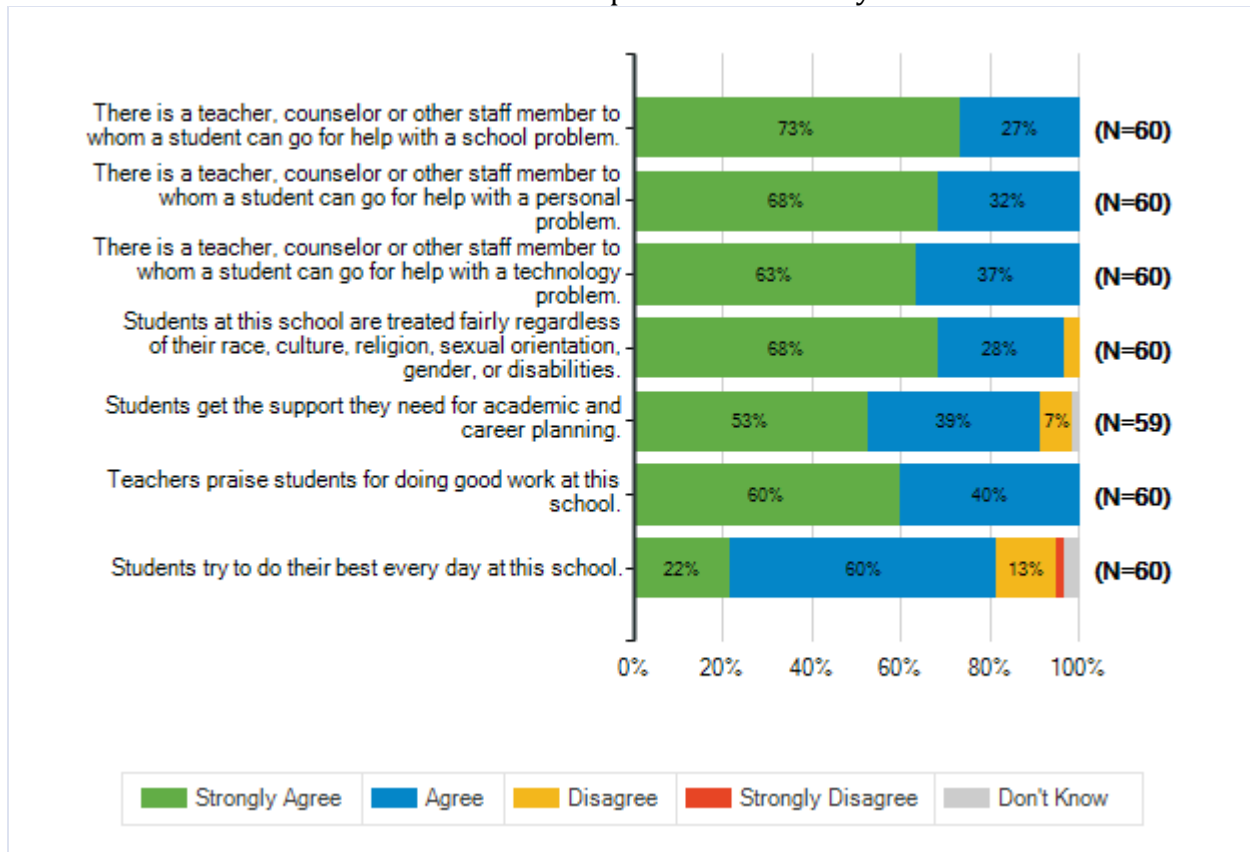
Lamar Consolidated ISD
2020-2021 Campus Climate Survey

Below are statements about the support students receive at school. As you respond, please think about your experiences this school year.

How strongly do you agree or disagree with each of the following statements?

		Strongly Agree	Agree	Disagree	Strongly Disagree	Don't Know	Total Responses
	There is a teacher, counselor or other staff member to	44	16	0	0	0	
(a)	whom a student can go for help with a school problem.	73%	27%	0%	0%	0%	60
	There is a teacher, counselor or other staff member to	41	19	0	0	0	
(b)	whom a student can go for help with a personal problem.	68%	32%	0%	0%	0%	60
	There is a teacher, counselor or other staff member to	38	22	0	0	0	
(c)	whom a student can go for help with a technology problem.	63%	37%	0%	0%	0%	60
	Students at this school are treated fairly regardless of	41	17	2	0	0	
(d)	their race, culture, religion, sexual orientation, gender, or disabilities.	68%	28%	3%	0%	0%	60
	Students get the support they	31	23	4	0	1	
(e)	need for academic and career planning.	53%	39%	7%	0%	2%	59
	Teachers praise students for	36	24	0	0	0	
(f)	doing good work at this school.	60%	40%	0%	0%	0%	60
	Students try to do their best	13	36	8	1	2	
(g)	every day at this school.	22%	60%	13%	2%	3%	60

Lamar Consolidated ISD
2020-2021 Campus Climate Survey

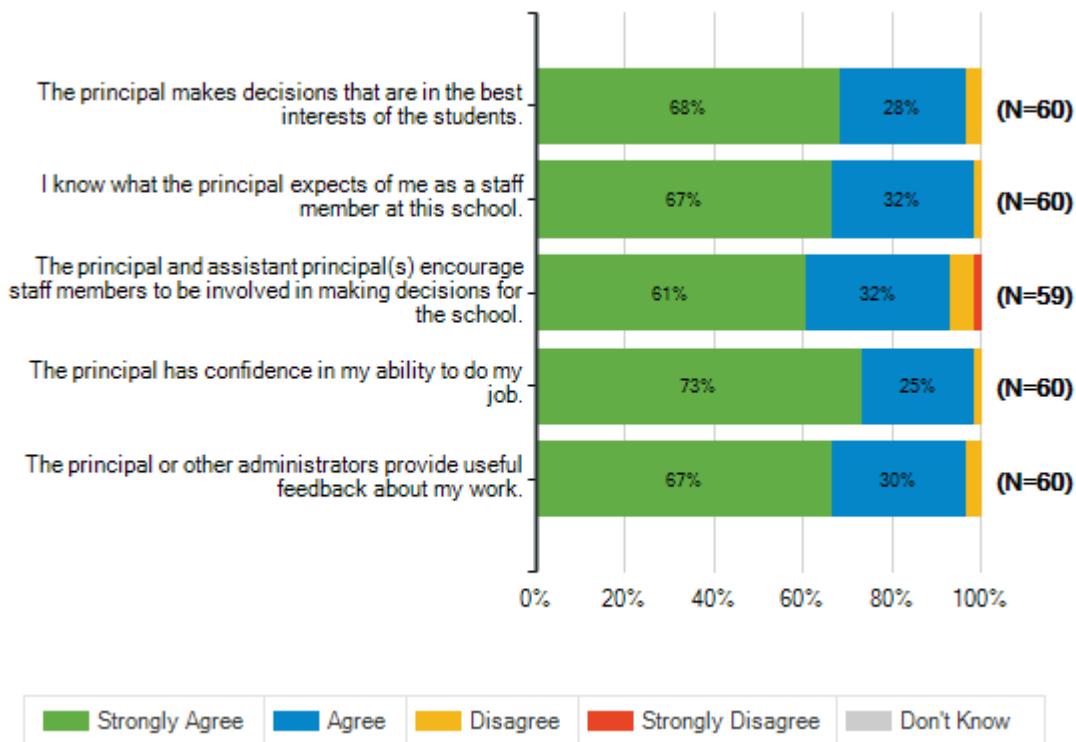


Lamar Consolidated ISD
2020-2021 Campus Climate Survey

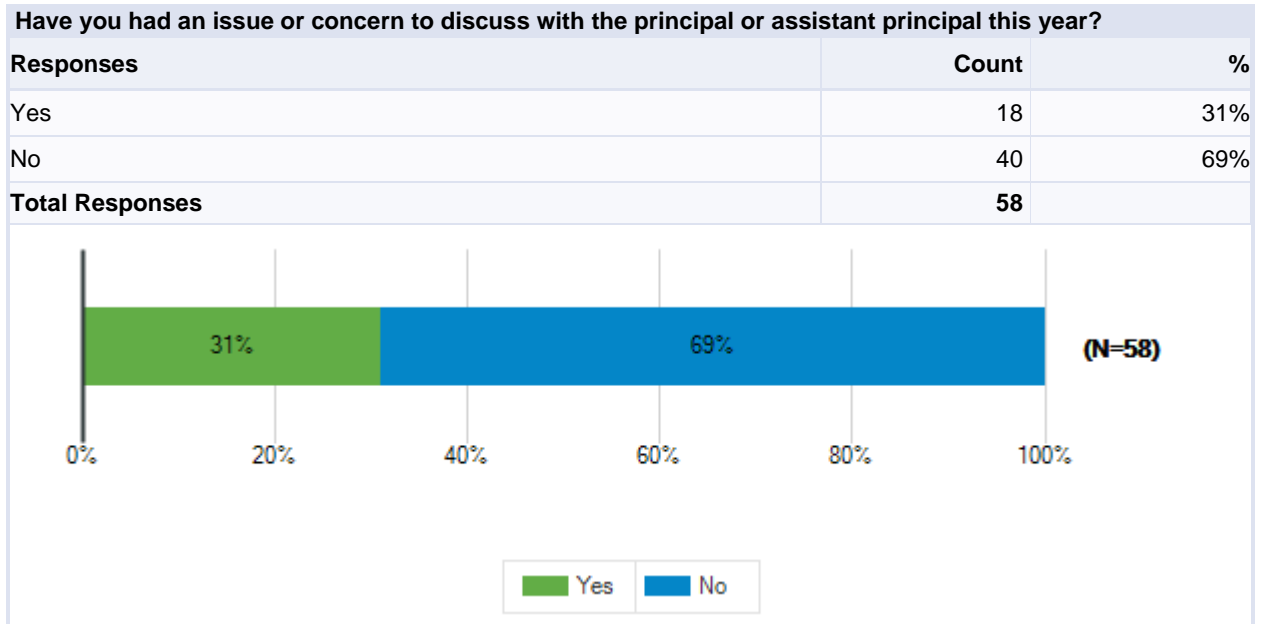
Below are statements related to your school's leadership. As you respond, please think about your experiences this school year.

How strongly do you agree or disagree with each of the following statements?

		Strongly Agree	Agree	Disagree	Strongly Disagree	Don't Know	Total Responses
	The principal makes	41	17	2	0	0	
(a)	decisions that are in the best interests of the students.	68%	28%	3%	0%	0%	60
	I know what the principal	40	19	1	0	0	
(b)	expects of me as a staff member at this school.	67%	32%	2%	0%	0%	60
	The principal and assistant principal(s) encourage staff	36	19	3	1	0	
(c)	members to be involved in making decisions for the school.	61%	32%	5%	2%	0%	59
	The principal has confidence	44	15	1	0	0	
(d)	in my ability to do my job.	73%	25%	2%	0%	0%	60
	The principal or other	40	18	2	0	0	
(e)	administrators provide useful feedback about my work.	67%	30%	3%	0%	0%	60

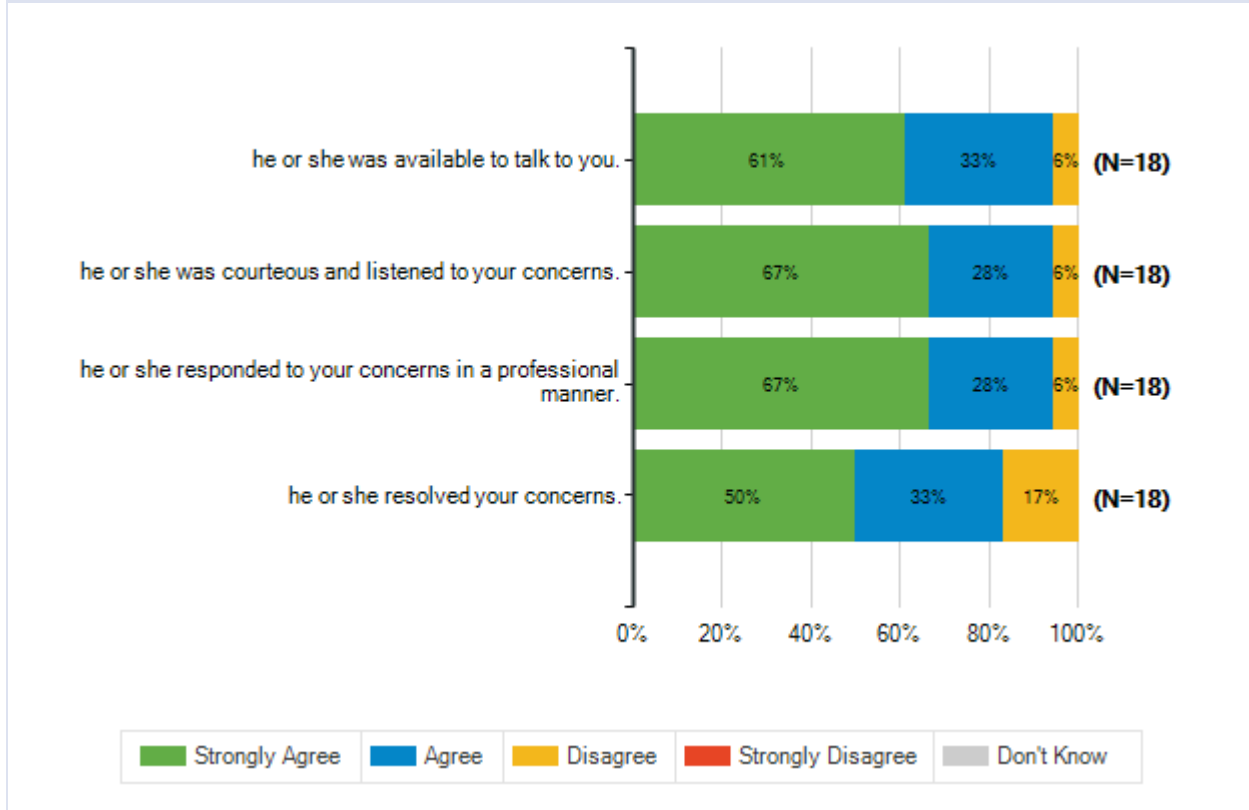


Lamar Consolidated ISD
2020-2021 Campus Climate Survey



Lamar Consolidated ISD
2020-2021 Campus Climate Survey

When you have had an issue or concern to discuss with a school administrator . . .							
		Strongly Agree	Agree	Disagree	Strongly Disagree	Don't Know	Total Responses
(a)	he or she was available to talk to you.	11	6	1	0	0	18
		61%	33%	6%	0%	0%	
(b)	he or she was courteous and listened to your concerns.	12	5	1	0	0	18
		67%	28%	6%	0%	0%	
(c)	he or she responded to your concerns in a professional manner.	12	5	1	0	0	18
		67%	28%	6%	0%	0%	
(d)	he or she resolved your concerns.	9	6	3	0	0	18
		50%	33%	17%	0%	0%	

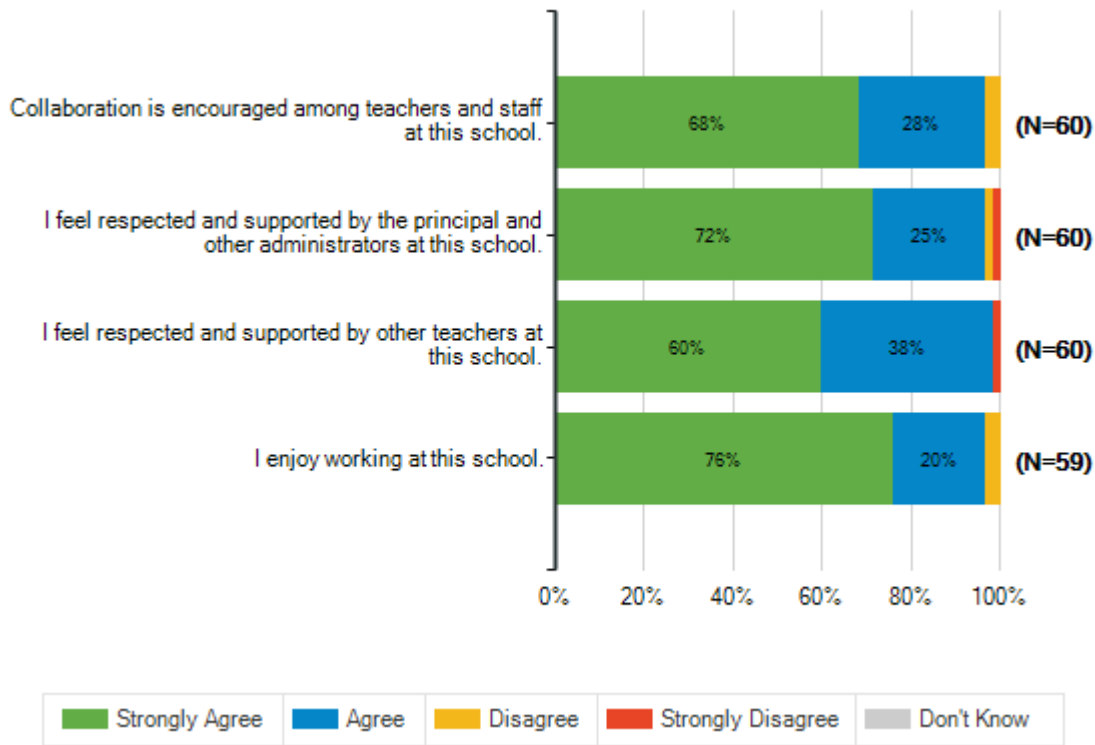


Lamar Consolidated ISD
2020-2021 Campus Climate Survey

Below are statements related to faculty relations and support. As you respond, please think about your experiences this school year.

How strongly do you agree or disagree with each of the following statements?

	Strongly Agree	Agree	Disagree	Strongly Disagree	Don't Know	Total Responses
(a) Collaboration is encouraged among teachers and staff at this school.	41 68%	17 28%	2 3%	0 0%	0 0%	60
(b) I feel respected and supported by the principal and other administrators at this school.	43 72%	15 25%	1 2%	1 2%	0 0%	60
(c) I feel respected and supported by other teachers at this school.	36 60%	23 38%	0 0%	1 2%	0 0%	60
(d) I enjoy working at this school.	45 76%	12 20%	2 3%	0 0%	0 0%	59

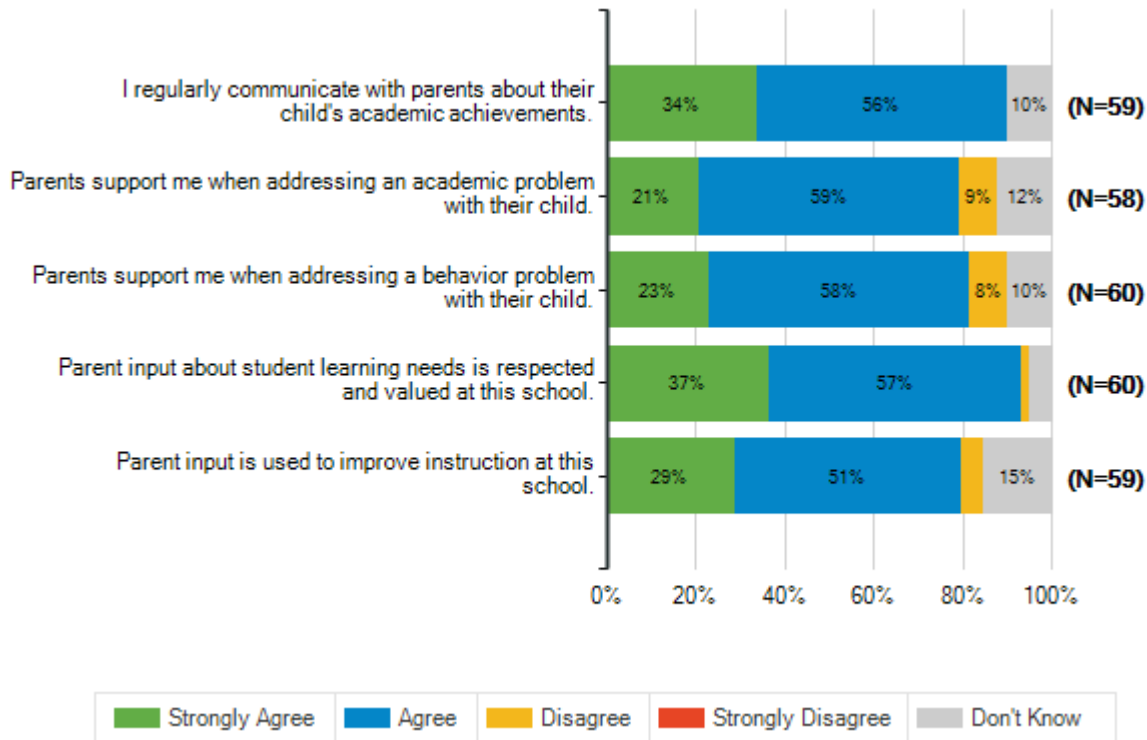


Lamar Consolidated ISD
2020-2021 Campus Climate Survey

Below are statements related to parent engagement. As you respond, please think about your experiences this school year.

How strongly do you agree or disagree with each of the following statements?

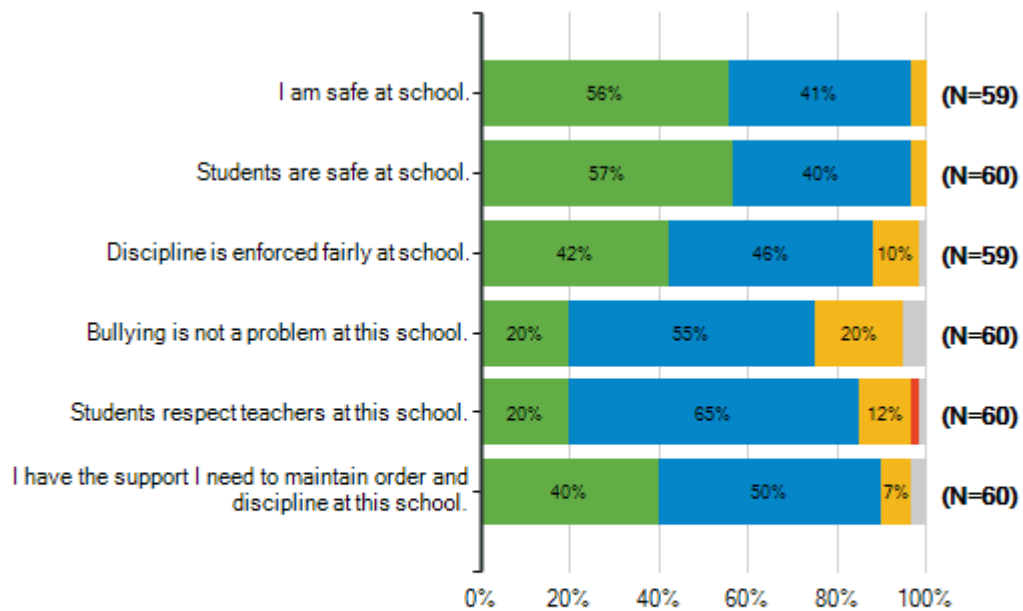
	Strongly Agree	Agree	Disagree	Strongly Disagree	Don't Know	Total Responses
I regularly communicate with	20	33	0	0	6	
(a) parents about their child's academic achievements.	34%	56%	0%	0%	10%	59
Parents support me when	12	34	5	0	7	
(b) addressing an academic problem with their child.	21%	59%	9%	0%	12%	58
Parents support me when	14	35	5	0	6	
(c) addressing a behavior problem with their child.	23%	58%	8%	0%	10%	60
Parent input about student	22	34	1	0	3	
(d) learning needs is respected and valued at this school.	37%	57%	2%	0%	5%	60
Parent input is used to	17	30	3	0	9	
(e) improve instruction at this school.	29%	51%	5%	0%	15%	59



Lamar Consolidated ISD
2020-2021 Campus Climate Survey

Below are statements related to safety and behavior. As you respond, please think about your experiences this school year.

How strongly do you agree or disagree with each of the following statements?							
	Strongly Agree	Agree	Disagree	Strongly Disagree	Don't Know	Total Responses	
(a) I am safe at school.	33	24	2	0	0	59	
(b) Students are safe at school.	34	24	2	0	0	60	
(c) Discipline is enforced fairly at school.	25	27	6	0	1	59	
(d) Bullying is not a problem at this school.	12	33	12	0	3	60	
(e) Students respect teachers at this school.	20	55	20	0	5	60	
(f) I have the support I need to maintain order and discipline at this school.	12	39	7	1	1	60	
(f) I have the support I need to maintain order and discipline at this school.	24	30	4	0	2	60	
(f) I have the support I need to maintain order and discipline at this school.	40	50	7	0	3	60	

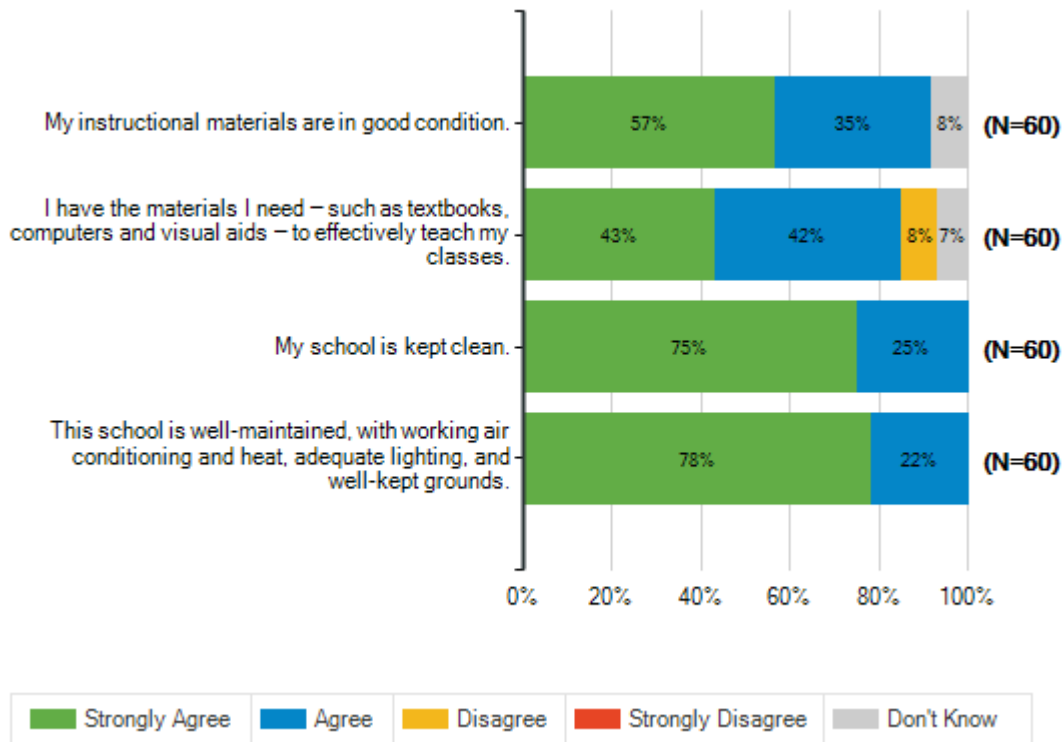


Lamar Consolidated ISD
2020-2021 Campus Climate Survey

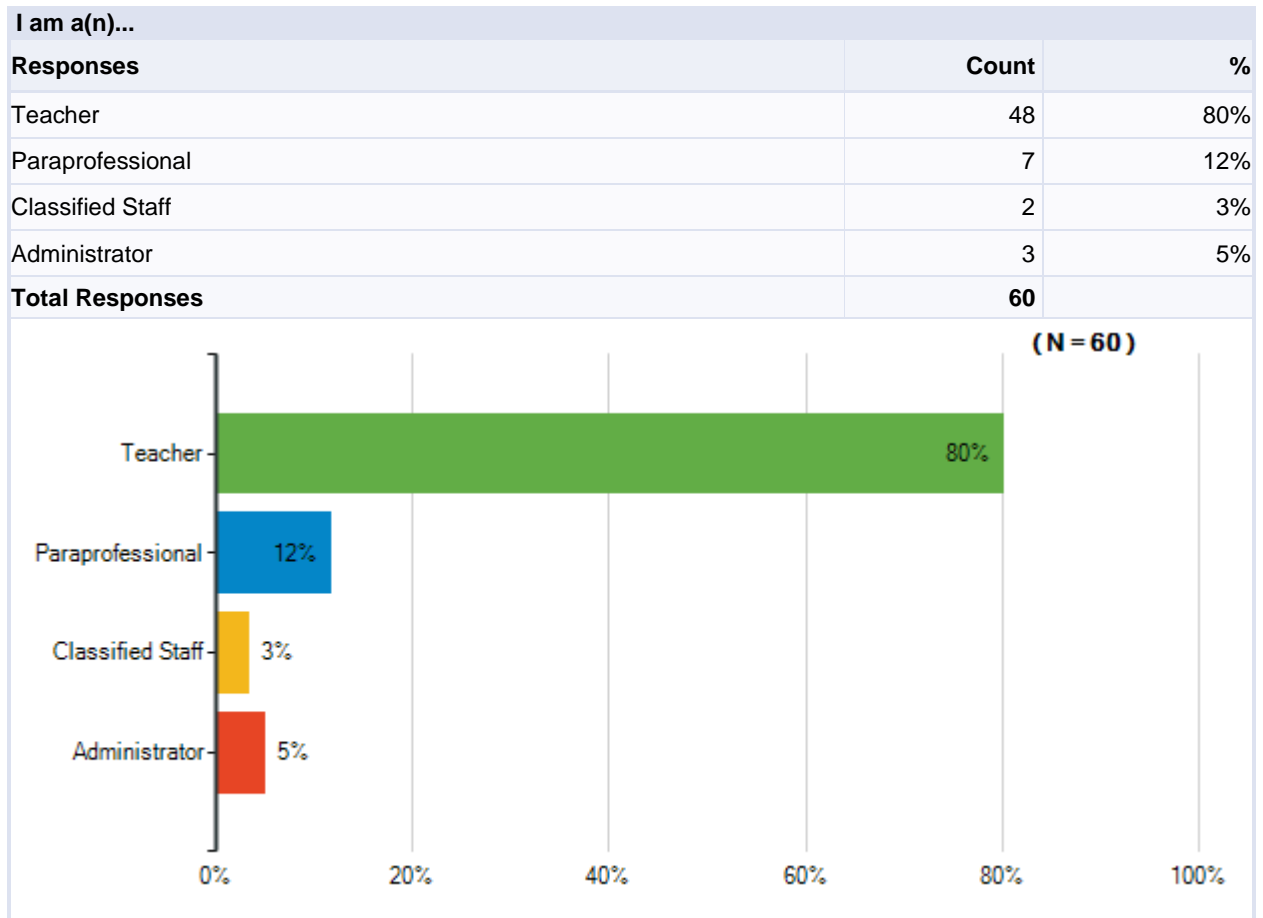
Below are statements about how your school operates. As you respond, please think about your experiences this school year.

How strongly do you agree or disagree with each of the following statements?

		Strongly Agree	Agree	Disagree	Strongly Disagree	Don't Know	Total Responses
(a)	My instructional materials are in good condition.	34 57%	21 35%	0 0%	0 0%	5 8%	60
(b)	I have the materials I need — such as textbooks, computers and visual aids — to effectively teach my classes.	26 43%	25 42%	5 8%	0 0%	4 7%	60
(c)	My school is kept clean.	45 75%	15 25%	0 0%	0 0%	0 0%	60
(d)	This school is well-maintained, with working air conditioning and heat, adequate lighting, and well-kept grounds.	47 78%	13 22%	0 0%	0 0%	0 0%	60

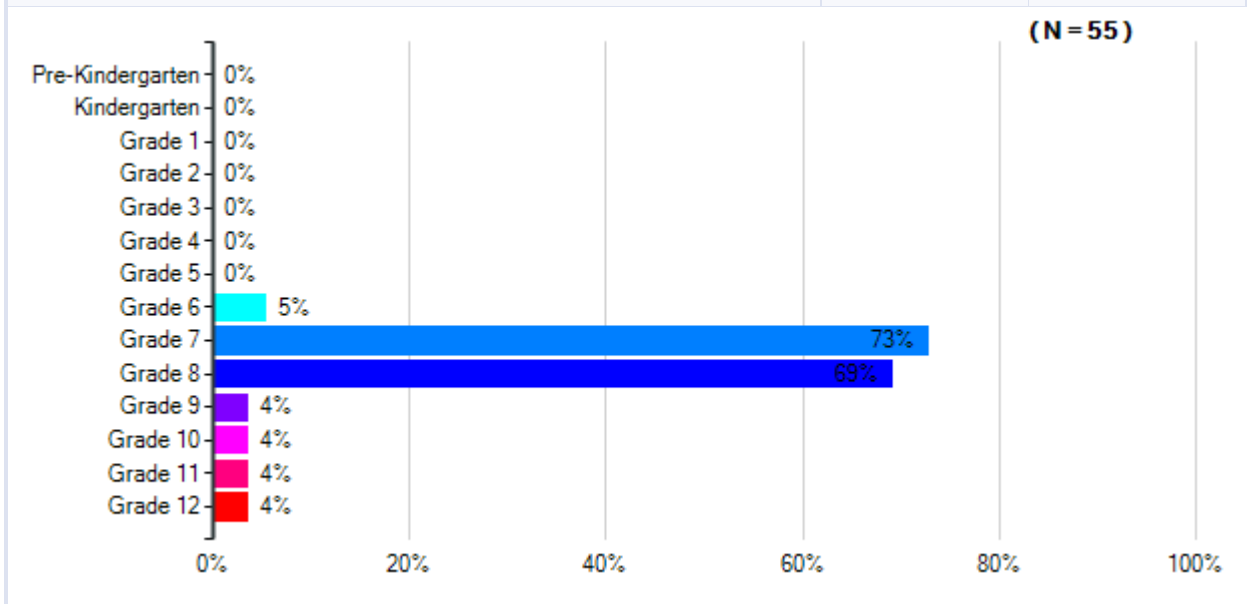


Lamar Consolidated ISD
2020-2021 Campus Climate Survey



Lamar Consolidated ISD
2020-2021 Campus Climate Survey

What grade level(s) do you teach?		
Responses	Count	%
Pre-Kindergarten	0	0%
Kindergarten	0	0%
Grade 1	0	0%
Grade 2	0	0%
Grade 3	0	0%
Grade 4	0	0%
Grade 5	0	0%
Grade 6	3	5%
Grade 7	40	73%
Grade 8	38	69%
Grade 9	2	4%
Grade 10	2	4%
Grade 11	2	4%
Grade 12	2	4%
Total Unique Responses	55	
Total Responses	89	



Note: Multiple answers per participant possible. Percentages added may exceed 100 since a participant may select more than one answer for this question.