

# Campus Climate Survey

2020-2021 Survey Results – Staff

**Terry High School**

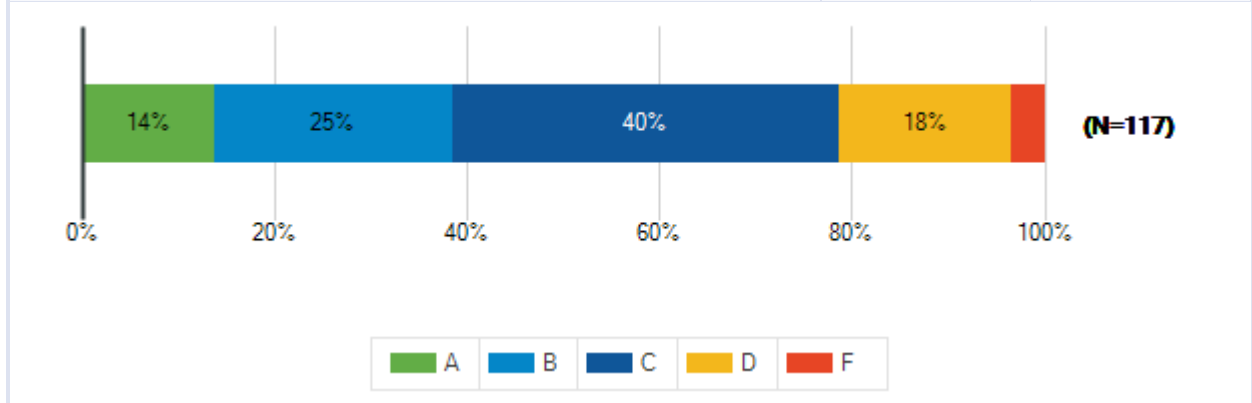
Lamar Consolidated ISD  
November 30 - December 20, 2020



Lamar Consolidated ISD  
2020-2021 Campus Climate Survey

Students receive grades of A, B, C, D or F to report the quality of their work. What grade would you give the overall quality of your school? On this scale, A represents outstanding, C is average and F is failing.

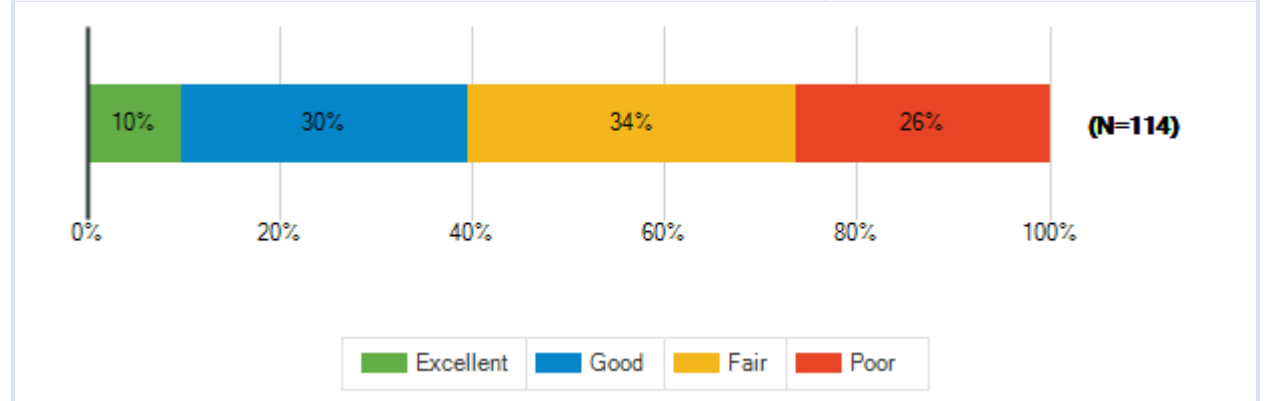
Responses	Count	%
A	16	14%
B	29	25%
C	47	40%
D	21	18%
F	4	3%
<b>Total Responses</b>	<b>117</b>	



Lamar Consolidated ISD  
2020-2021 Campus Climate Survey

Overall, how would you rate how Lamar CISD handled the COVID-19 pandemic for the 2020-2021 school year?

Responses	Count	%
Excellent	11	10%
Good	34	30%
Fair	39	34%
Poor	30	26%
<b>Total Responses</b>	<b>114</b>	



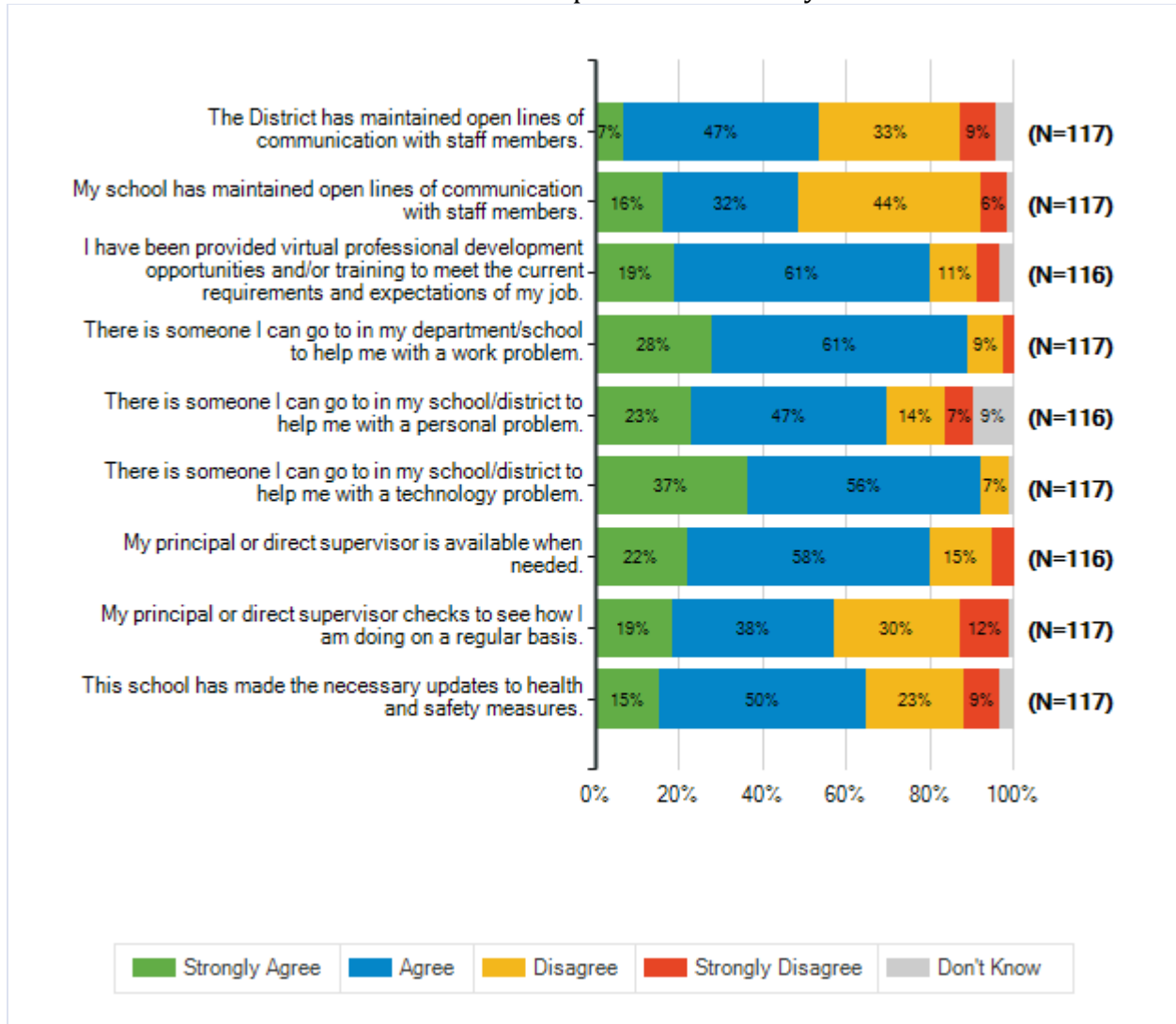
Lamar Consolidated ISD  
2020-2021 Campus Climate Survey

**Below are statements about the management of the COVID-19 pandemic. As you respond, please think about your experiences this school year.**

**How strongly do you agree or disagree with each of the following statements?**

		<b>Strongly Agree</b>	<b>Agree</b>	<b>Disagree</b>	<b>Strongly Disagree</b>	<b>Don't Know</b>	<b>Total Responses</b>
	The District has maintained	8	55	39	10	5	
(a)	open lines of communication with staff members.	7%	47%	33%	9%	4%	117
	My school has maintained	19	38	51	7	2	
(b)	open lines of communication with staff members.	16%	32%	44%	6%	2%	117
	I have been provided virtual professional development opportunities and/or training	22	71	13	6	4	
(c)	to meet the current requirements and expectations of my job.	19%	61%	11%	5%	3%	116
	There is someone I can go to	33	71	10	3	0	
(d)	in my department/school to help me with a work problem.	28%	61%	9%	3%	0%	117
	There is someone I can go to	27	54	16	8	11	
(e)	in my school/district to help me with a personal problem.	23%	47%	14%	7%	9%	116
	There is someone I can go to	43	65	8	0	1	
(f)	in my school/district to help me with a technology problem.	37%	56%	7%	0%	1%	117
	My principal or direct	26	67	17	6	0	
(g)	supervisor is available when needed.	22%	58%	15%	5%	0%	116
	My principal or direct	22	45	35	14	1	
(h)	supervisor checks to see how I am doing on a regular basis.	19%	38%	30%	12%	1%	117
	This school has made the	18	58	27	10	4	
(i)	necessary updates to health and safety measures.	15%	50%	23%	9%	3%	117

Lamar Consolidated ISD  
2020-2021 Campus Climate Survey



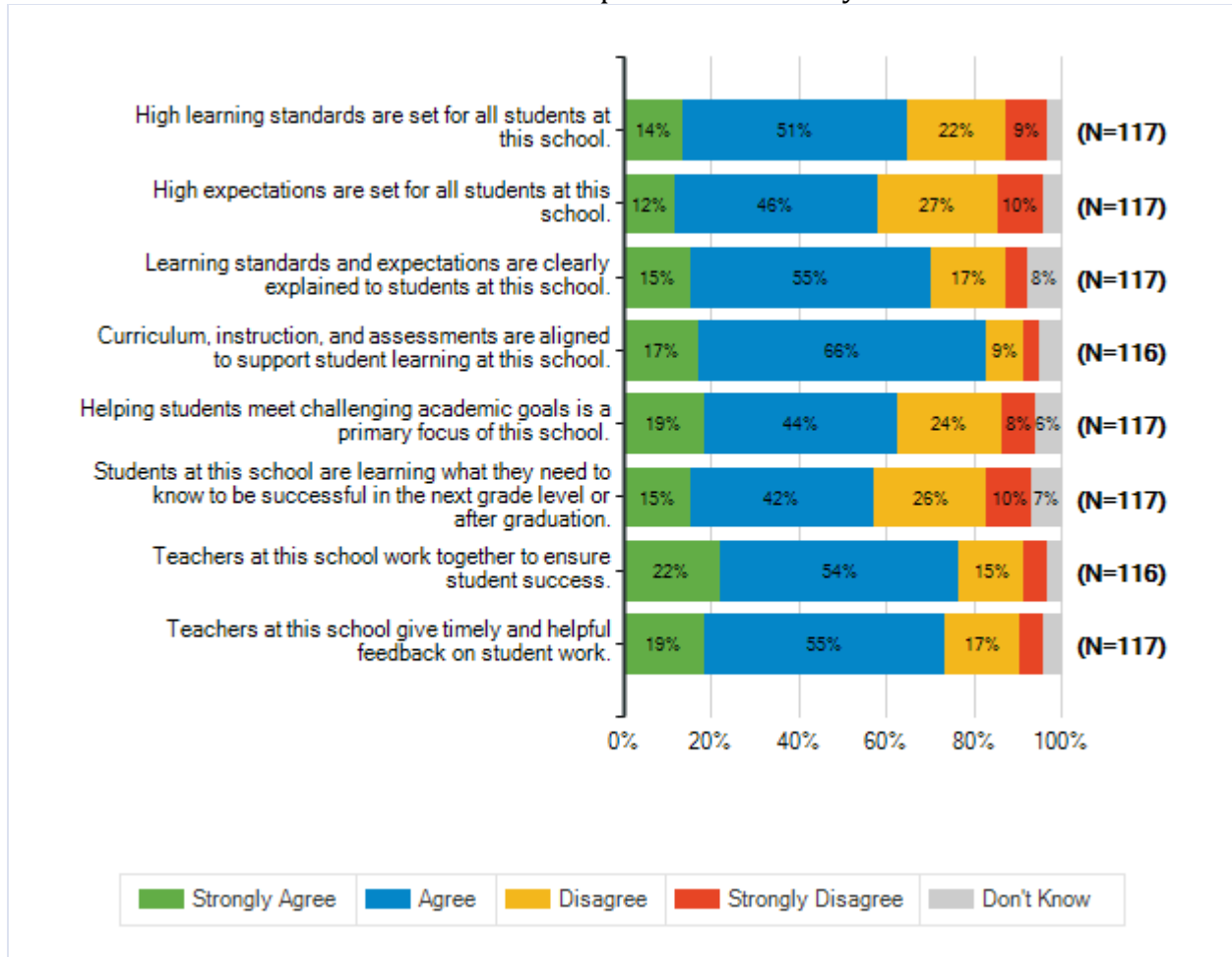
Lamar Consolidated ISD  
2020-2021 Campus Climate Survey

Below are statements about the quality of education your students receive at this school. As you respond, please think about your experiences this school year.

How strongly do you agree or disagree with each of the following statements?

		Strongly Agree	Agree	Disagree	Strongly Disagree	Don't Know	Total Responses
	High learning standards are set for all students at this school.	16	60	26	11	4	117
(a)	High expectations are set for all students at this school.	14%	51%	22%	9%	3%	117
(b)	Learning standards and expectations are clearly explained to students at this school.	14	54	32	12	5	117
(c)	Curriculum, instruction, and assessments are aligned to support student learning at this school.	18	64	20	6	9	117
(d)	Helping students meet challenging academic goals is a primary focus of this school.	15%	55%	17%	5%	8%	116
(e)	Students at this school are learning what they need to know to be successful in the next grade level or after graduation.	20	76	10	4	6	117
(f)	Teachers at this school work together to ensure student success.	19%	44%	24%	8%	6%	117
(g)	Teachers at this school give timely and helpful feedback on student work.	18	49	30	12	8	117
(h)		15%	42%	26%	10%	7%	116
		26	63	17	6	4	116
		22%	54%	15%	5%	3%	117
		22	64	20	6	5	117
		19%	55%	17%	5%	4%	117

Lamar Consolidated ISD  
2020-2021 Campus Climate Survey



Lamar Consolidated ISD  
2020-2021 Campus Climate Survey

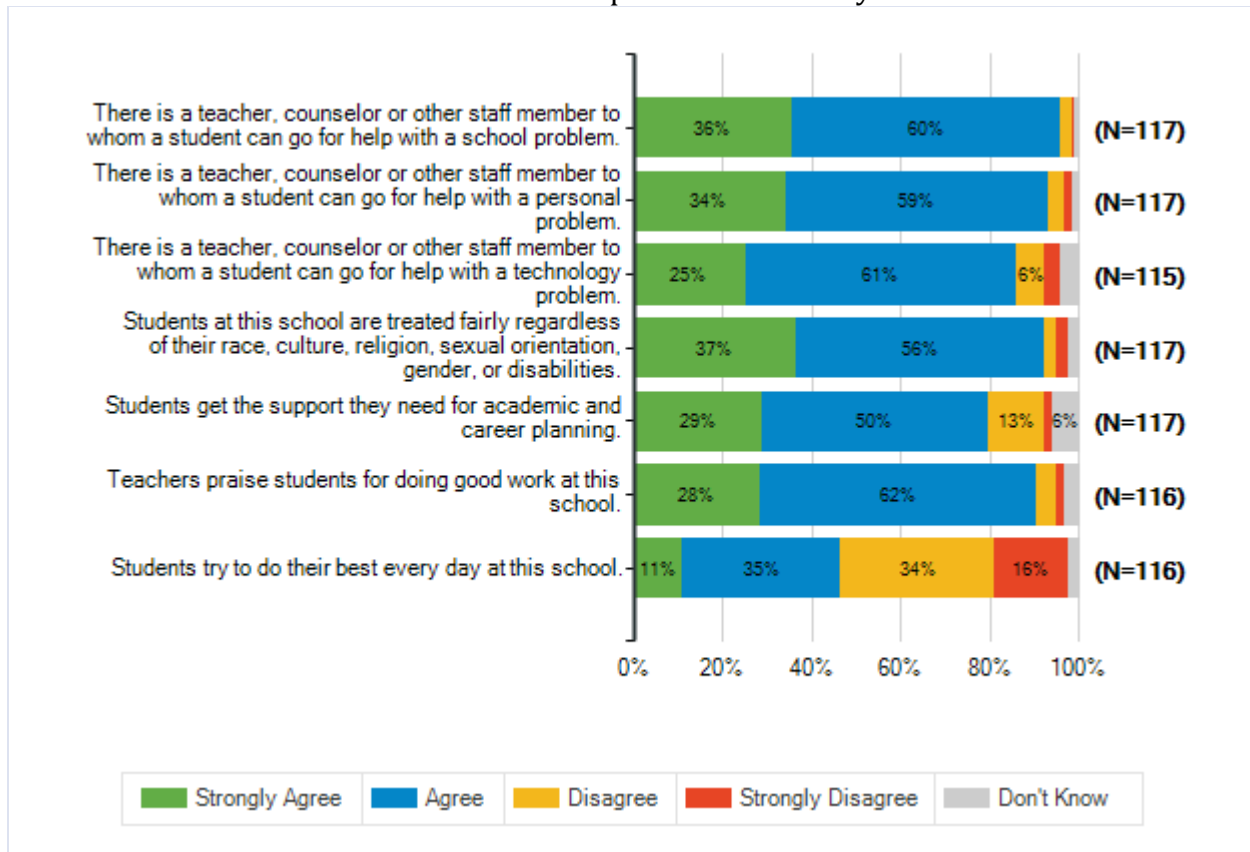
**Below are statements about the support students receive at school. As you respond, please think about your experiences this school year.**

**How strongly do you agree or disagree with each of the following statements?**

		<b>Strongly Agree</b>	<b>Agree</b>	<b>Disagree</b>	<b>Strongly Disagree</b>	<b>Don't Know</b>	<b>Total Responses</b>
	There is a teacher, counselor or other staff member to	42	70	3	1	1	
(a)	whom a student can go for help with a school problem.	36%	60%	3%	1%	1%	117
	There is a teacher, counselor or other staff member to	40	69	4	2	2	
(b)	whom a student can go for help with a personal problem.	34%	59%	3%	2%	2%	117
	There is a teacher, counselor or other staff member to	29	70	7	4	5	
(c)	whom a student can go for help with a technology problem.	25%	61%	6%	3%	4%	115
	Students at this school are treated fairly regardless of	43	65	3	3	3	
(d)	their race, culture, religion, sexual orientation, gender, or disabilities.	37%	56%	3%	3%	3%	117
	Students get the support they	34	59	15	2	7	
(e)	need for academic and career planning.	29%	50%	13%	2%	6%	117
	Teachers praise students for	33	72	5	2	4	
(f)	doing good work at this school.	28%	62%	4%	2%	3%	116
	Students try to do their best	13	41	40	19	3	
(g)	every day at this school.	11%	35%	34%	16%	3%	116



Lamar Consolidated ISD  
2020-2021 Campus Climate Survey

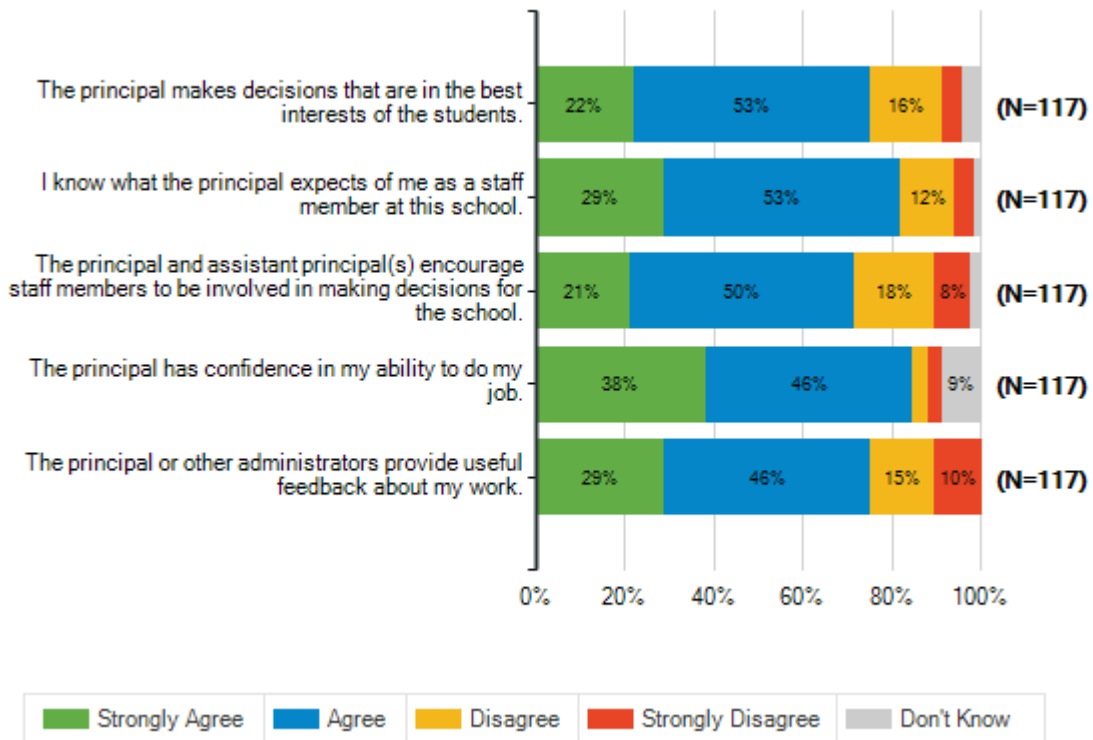


Lamar Consolidated ISD  
2020-2021 Campus Climate Survey

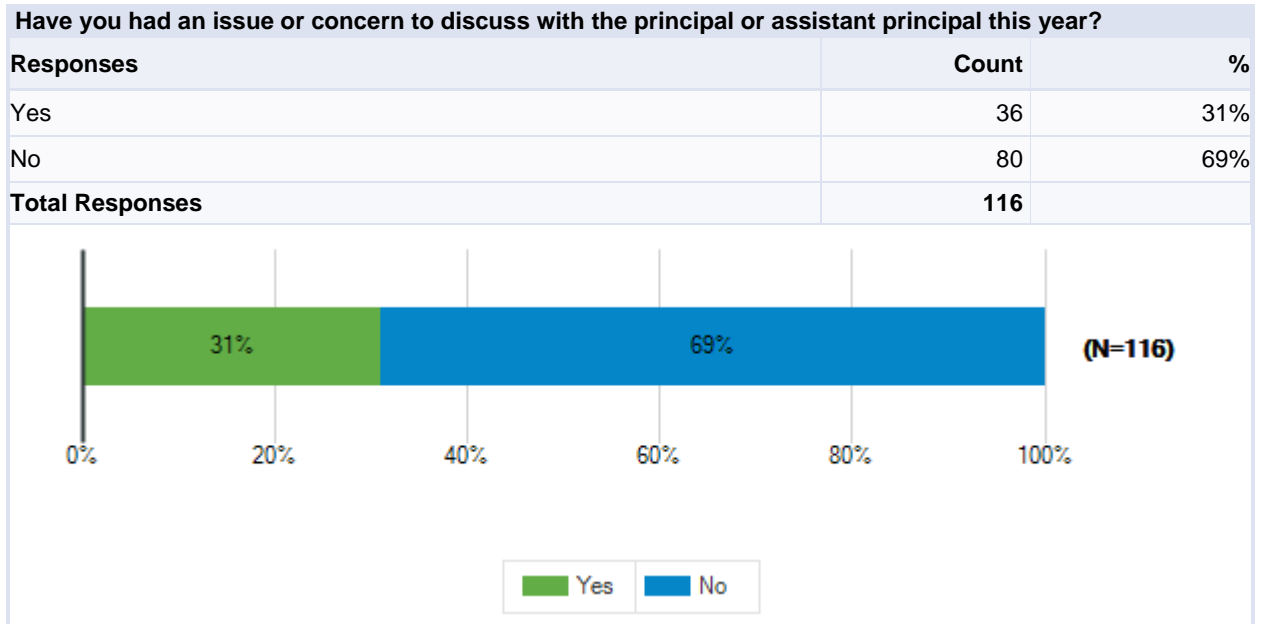
Below are statements related to your school's leadership. As you respond, please think about your experiences this school year.

How strongly do you agree or disagree with each of the following statements?

	Strongly Agree	Agree	Disagree	Strongly Disagree	Don't Know	Total Responses
(a) The principal makes decisions that are in the best interests of the students.	26 22%	62 53%	19 16%	5 4%	5 4%	117
(b) I know what the principal expects of me as a staff member at this school.	34 29%	62 53%	14 12%	5 4%	2 2%	117
(c) The principal and assistant principal(s) encourage staff members to be involved in making decisions for the school.	25 21%	59 50%	21 18%	9 8%	3 3%	117
(d) The principal has confidence in my ability to do my job.	45 38%	54 46%	4 3%	4 3%	10 9%	117
(e) The principal or other administrators provide useful feedback about my work.	34 29%	54 46%	17 15%	12 10%	0 0%	117



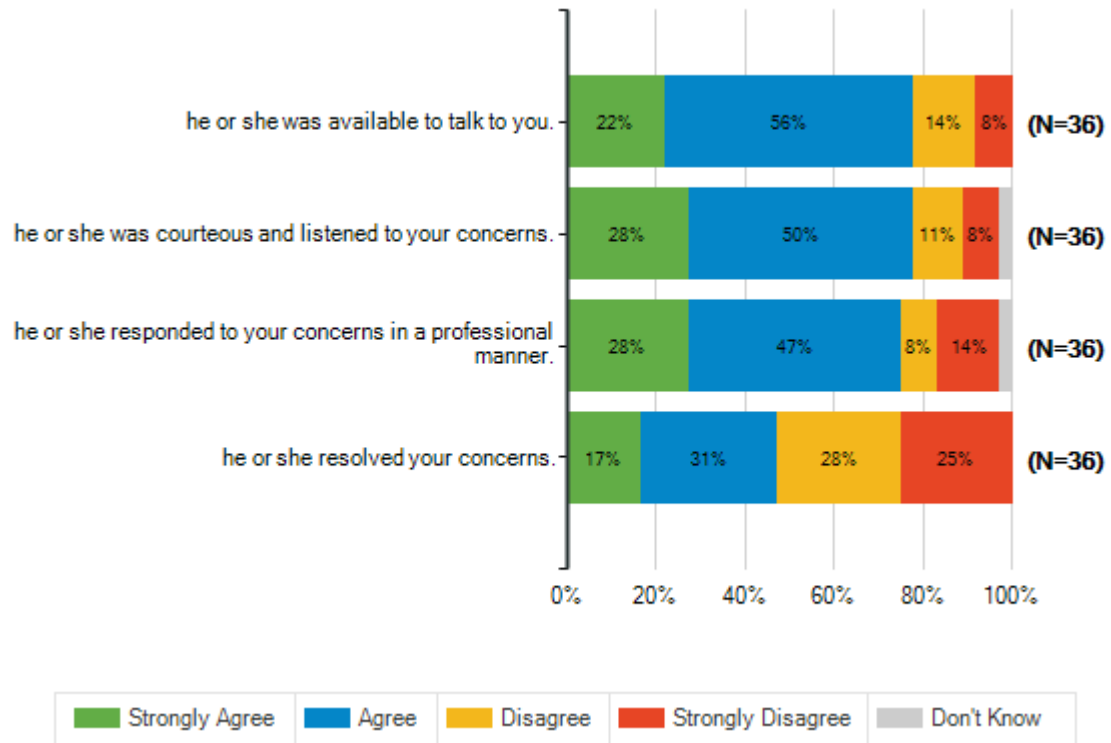
Lamar Consolidated ISD  
2020-2021 Campus Climate Survey



Lamar Consolidated ISD  
2020-2021 Campus Climate Survey

When you have had an issue or concern to discuss with a school administrator . . .

		Strongly Agree	Agree	Disagree	Strongly Disagree	Don't Know	Total Responses
(a)	he or she was available to talk to you.	8	20	5	3	0	36
		22%	56%	14%	8%	0%	
(b)	he or she was courteous and listened to your concerns.	10	18	4	3	1	36
		28%	50%	11%	8%	3%	
(c)	he or she responded to your concerns in a professional manner.	10	17	3	5	1	36
		28%	47%	8%	14%	3%	
(d)	he or she resolved your concerns.	6	11	10	9	0	36
		17%	31%	28%	25%	0%	

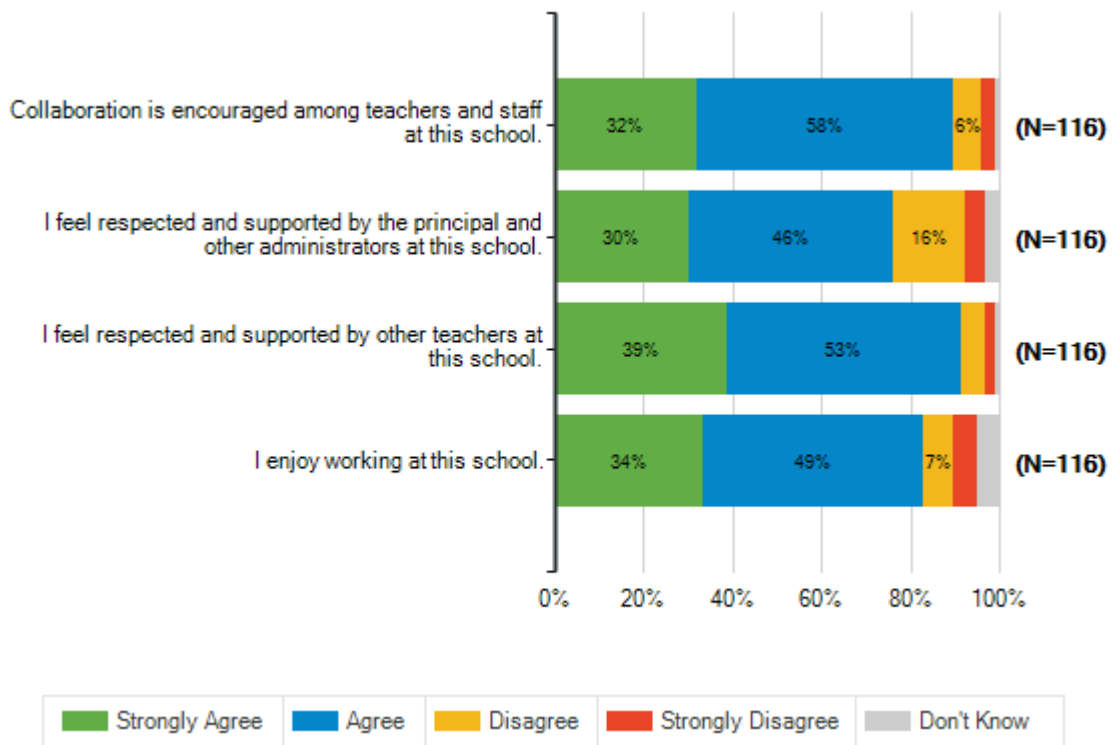


Lamar Consolidated ISD  
2020-2021 Campus Climate Survey

Below are statements related to faculty relations and support. As you respond, please think about your experiences this school year.

How strongly do you agree or disagree with each of the following statements?

		Strongly Agree	Agree	Disagree	Strongly Disagree	Don't Know	Total Responses
	Collaboration is encouraged among teachers and staff at this school.	37	67	7	4	1	116
(a)		32%	58%	6%	3%	1%	116
	I feel respected and supported by the principal and other administrators at this school.	35	53	19	5	4	116
(b)		30%	46%	16%	4%	3%	116
	I feel respected and supported by other teachers at this school.	45	61	6	3	1	116
(c)		39%	53%	5%	3%	1%	116
	I enjoy working at this school.	39	57	8	6	6	116
(d)		34%	49%	7%	5%	5%	116

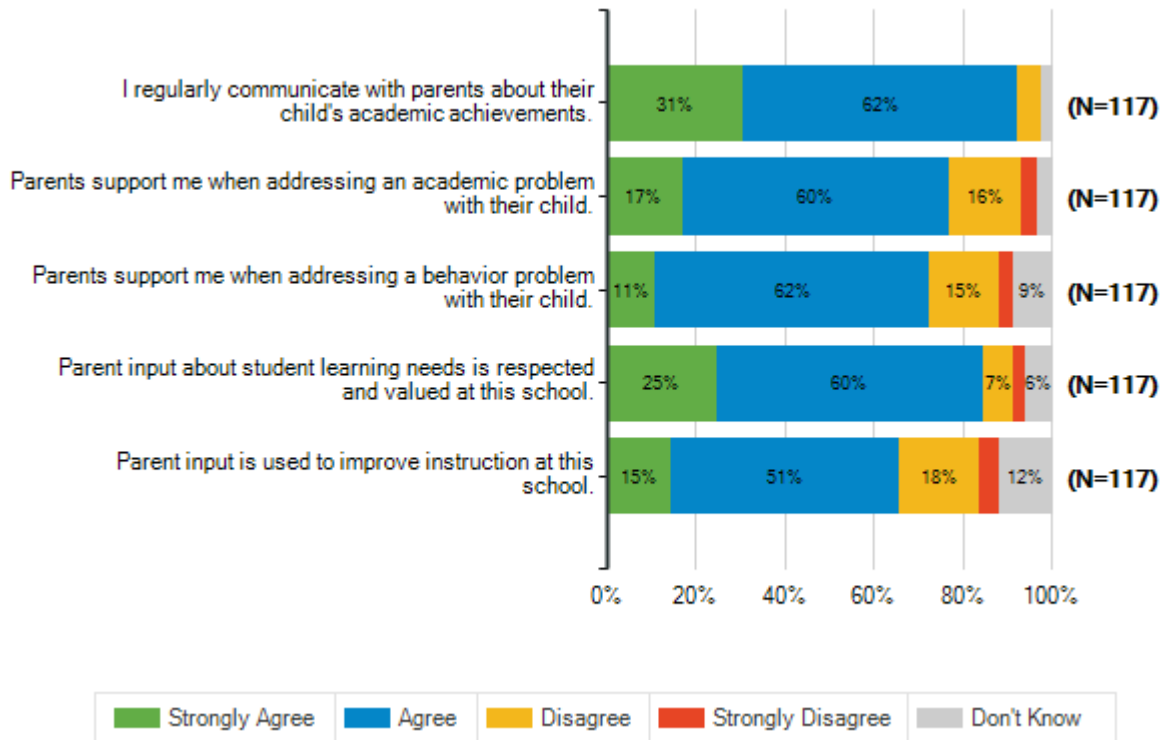


Lamar Consolidated ISD  
2020-2021 Campus Climate Survey

Below are statements related to parent engagement. As you respond, please think about your experiences this school year.

How strongly do you agree or disagree with each of the following statements?

	Strongly Agree	Agree	Disagree	Strongly Disagree	Don't Know	Total Responses
I regularly communicate with	36	72	6	0	3	
(a) parents about their child's academic achievements.	31%	62%	5%	0%	3%	117
Parents support me when	20	70	19	4	4	
(b) addressing an academic problem with their child.	17%	60%	16%	3%	3%	117
Parents support me when	13	72	18	4	10	
(c) addressing a behavior problem with their child.	11%	62%	15%	3%	9%	117
Parent input about student	29	70	8	3	7	
(d) learning needs is respected and valued at this school.	25%	60%	7%	3%	6%	117
Parent input is used to	17	60	21	5	14	
(e) improve instruction at this school.	15%	51%	18%	4%	12%	117

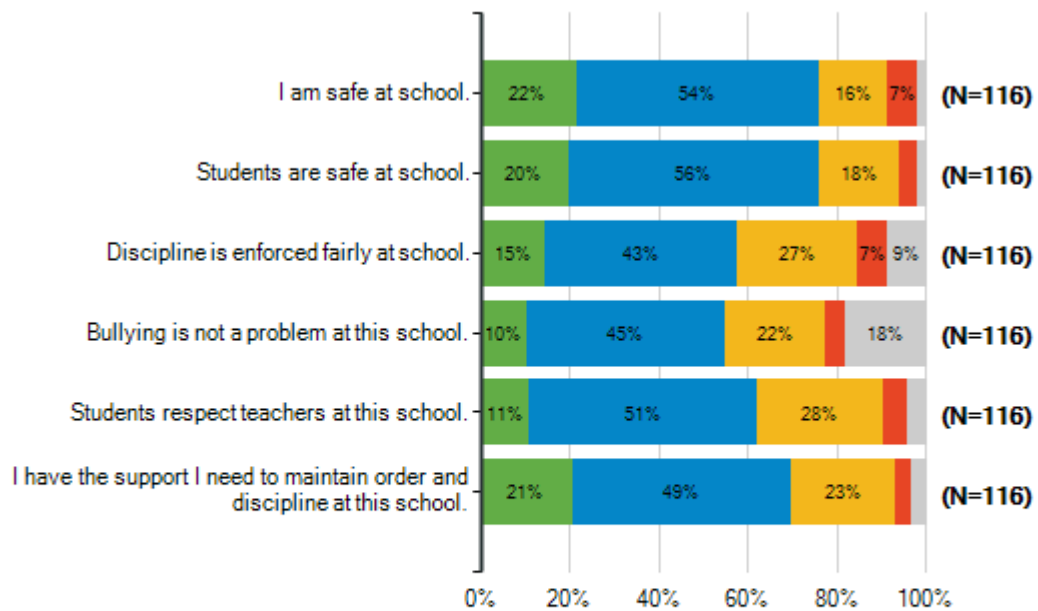


Lamar Consolidated ISD  
2020-2021 Campus Climate Survey

Below are statements related to safety and behavior. As you respond, please think about your experiences this school year.

How strongly do you agree or disagree with each of the following statements?

	Strongly Agree	Agree	Disagree	Strongly Disagree	Don't Know	Total Responses
	25	63	18	8	2	
(a) I am safe at school.	22%	54%	16%	7%	2%	116
	23	65	21	5	2	
(b) Students are safe at school.	20%	56%	18%	4%	2%	116
	17	50	31	8	10	
(c) Discipline is enforced fairly at school.	15%	43%	27%	7%	9%	116
	12	52	26	5	21	
(d) Bullying is not a problem at this school.	10%	45%	22%	4%	18%	116
	13	59	33	6	5	
(e) Students respect teachers at this school.	11%	51%	28%	5%	4%	116
	24	57	27	4	4	
(f) I have the support I need to maintain order and discipline at this school.	21%	49%	23%	3%	3%	116

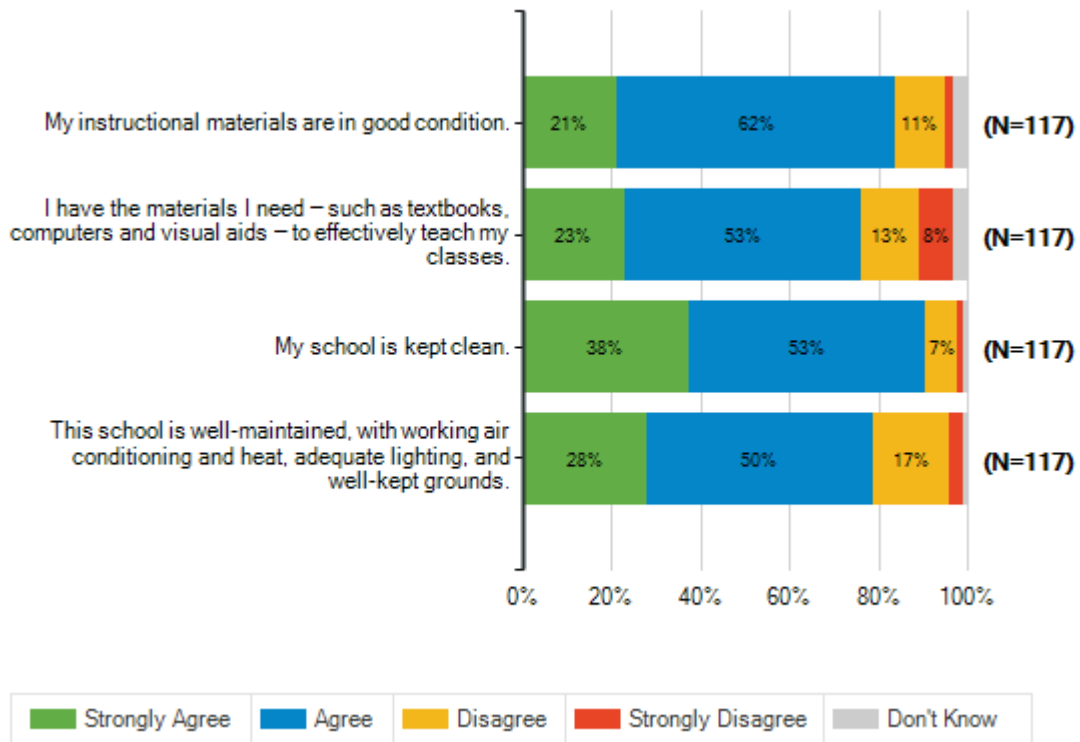


Lamar Consolidated ISD  
2020-2021 Campus Climate Survey

Below are statements about how your school operates. As you respond, please think about your experiences this school year.

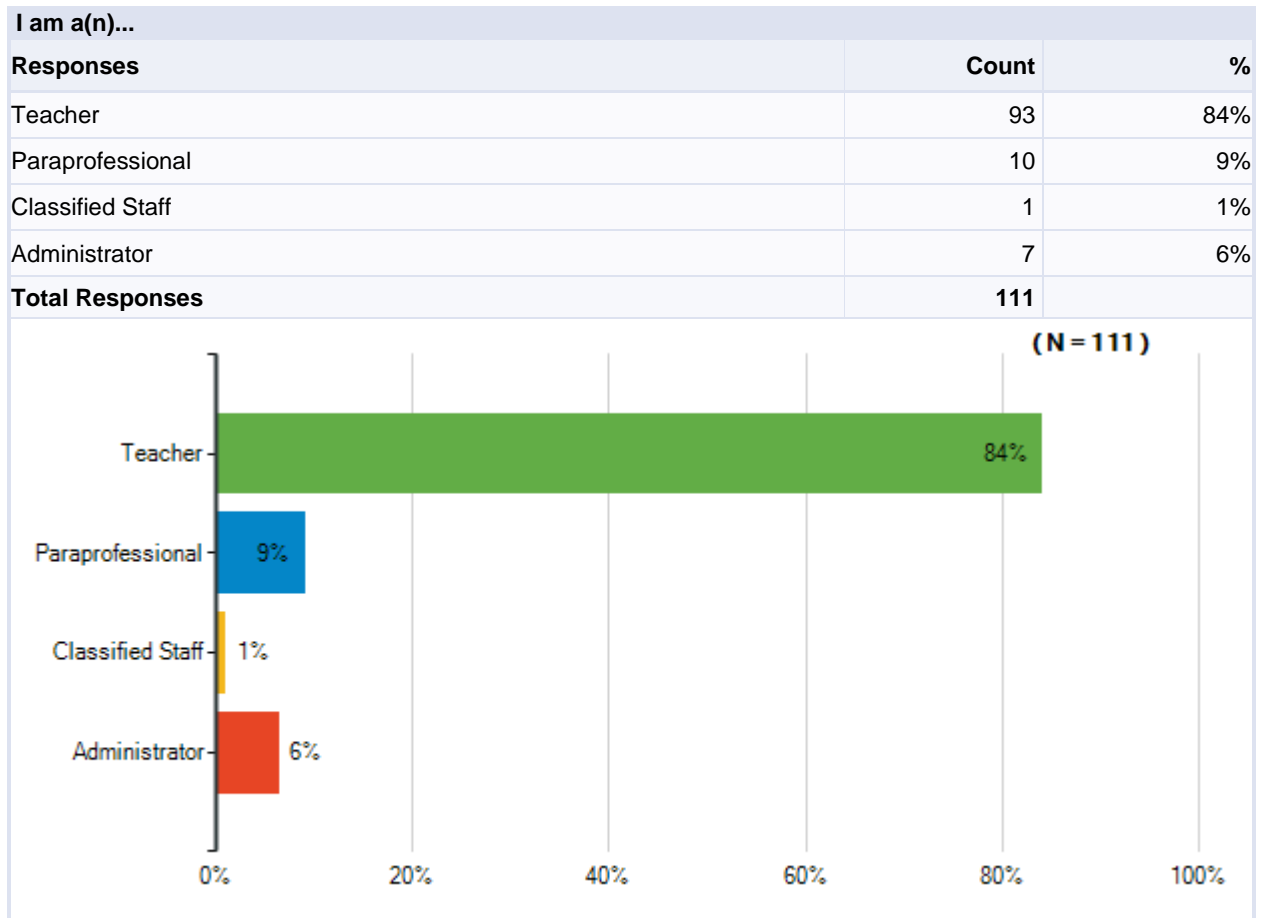
How strongly do you agree or disagree with each of the following statements?

		Strongly Agree	Agree	Disagree	Strongly Disagree	Don't Know	Total Responses
(a)	My instructional materials are in good condition.	25	73	13	2	4	117
		21%	62%	11%	2%	3%	
(b)	I have the materials I need — such as textbooks, computers and visual aids — to effectively teach my classes.	27	62	15	9	4	117
		23%	53%	13%	8%	3%	
(c)	My school is kept clean.	44	62	8	2	1	117
		38%	53%	7%	2%	1%	
(d)	This school is well-maintained, with working air conditioning and heat, adequate lighting, and well-kept grounds.	33	59	20	4	1	117
		28%	50%	17%	3%	1%	



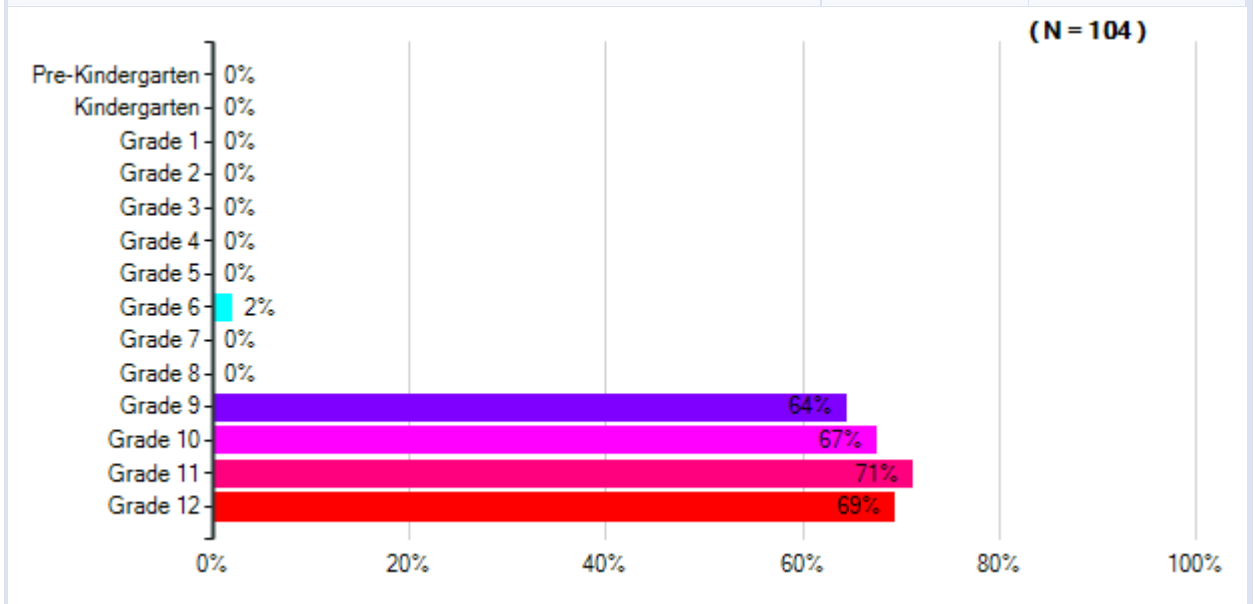


Lamar Consolidated ISD  
2020-2021 Campus Climate Survey



Lamar Consolidated ISD  
2020-2021 Campus Climate Survey

What grade level(s) do you teach?		
Responses	Count	%
Pre-Kindergarten	0	0%
Kindergarten	0	0%
Grade 1	0	0%
Grade 2	0	0%
Grade 3	0	0%
Grade 4	0	0%
Grade 5	0	0%
Grade 6	2	2%
Grade 7	0	0%
Grade 8	0	0%
Grade 9	67	64%
Grade 10	70	67%
Grade 11	74	71%
Grade 12	72	69%
<b>Total Unique Responses</b>	<b>104</b>	
<b>Total Responses</b>	<b>285</b>	



**Note:** Multiple answers per participant possible. Percentages added may exceed 100 since a participant may select more than one answer for this question.