

Car Rider Procedures 2021-2022

Car Rider Arrival

The car rider line entrance is located off Katy Fulshear Road, next to The Rocking Horse Nursery School (see traffic pattern). Assigned staff will be at the front of the school to greet your students. Parents, please wait until you reach the first available staff member before your child exits the car. We ask that your child is ready when it is time to unload. This includes having their Smart Tag Lanyard and backpack on. For safety reasons, we are not able to unbuckle safety restraints. All students will exit the car on the side closest to the building. If your student is a Huggins Hound and in Kindergarten, First, or Second Grade, they will enter through the front doors. Third, Fourth, and Fifth Graders that attend Huggins can enter through the front gate to the portables unless they need breakfast. If your student is a Morgan Panther and in Kindergarten or First Grade, they will enter through the front doors. If they are in Second-Fifth Grade, they can enter through the front gate to the portables unless they need breakfast. Please stay in a single-file line and refrain from passing any vehicles. As a reminder, our doors open at 7:00 am. Please do not drop off your child before then, as we do not want them left unattended. Parents will not be permitted to park in the north or west lots and walk their students to the building. Please help keep our students safe!

Car Rider Dismissal

Utilizing the same traffic pattern as morning arrival, please enter the car rider line on Katy-Fulshear Road. Please place your car rider tag on your rearview mirror with the number facing out. A staff member will be walking the line, recording your car rider tag number. You will pull up to the first available cone and the staff member will match the car rider number on your car tag to the number on the child's transportation tag. If you are carpooling, you must have the tags of all the students you are picking up. **We will not release any students without an official car rider tag.** If you do not have the car rider tag you will need to park and come into the building to check your child out in person, making sure you have valid identification. Check-out from the office will occur once the car rider line is clear. For safety reasons, we are not able to buckle safety restraints. Please do not attempt to pass another car while in the car rider line. Please stay in a single file line until you exit the driveway. If you arrive after all numbers have been inputted into the system, you will be advised to park and check your child out in the office. Please remember that the school day ends at 2:55pm. All cars should be in line by this time so that we can effectively coordinate dismissal.

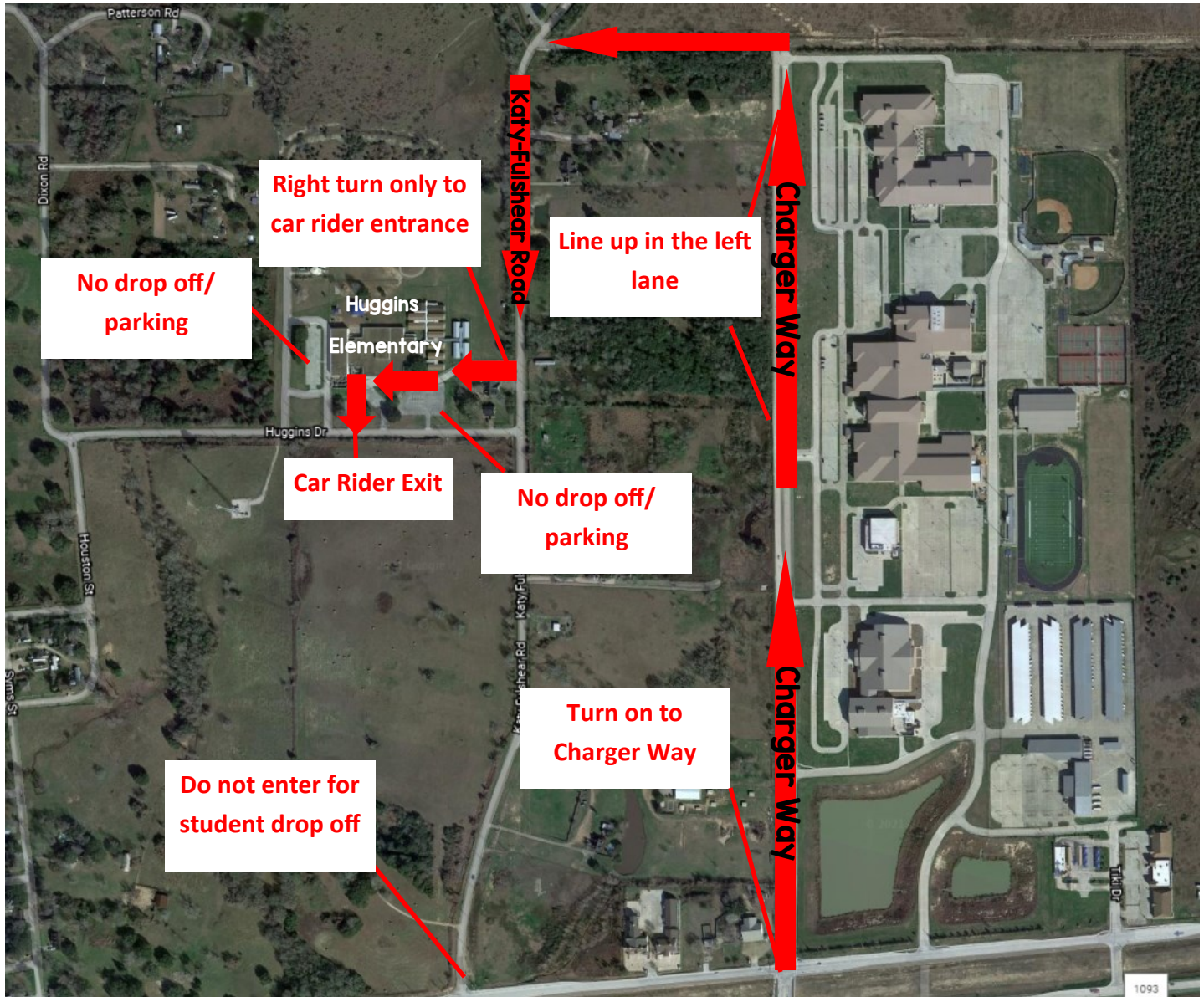
Don't forget to review the traffic pattern for arrival and dismissal on the other side!

Please note that the first couple of weeks of school, we anticipate a longer car rider dismissal as students, staff, and parents work through the process.

Our number one goal will always be student safety!



Traffic Pattern



We continue to work closely with LCISD PD and Fulshear PD to ensure the best possible traffic pattern for our car riders. If you will be utilizing the car rider line, please use Bois d'Arc/Charger Way. From downtown Fulshear you will take FM 1093 to Charger Way. Turn left as if you are headed to the high school. Follow Charger Way to Katy-Fulshear Road. Turn left onto Katy-Fulshear road and then turn right to access the car rider line. If you are coming from 1463, please make a right turn onto Bois d'Arc/Charger Way and follow the same pattern.

Please note that no cars will be permitted to make a left turn into the car rider line on Katy-Fulshear Road or U-turn in the community center parking lot.