

*WELCOME
TO
ANTOINETTE
READING JUNIOR
HIGH
ORIENTATION 2023!*



LONGHORNS

ANTOINETTE READING JUNIOR HIGH

AR



***READING JUNIOR HIGH
2023- 2024***

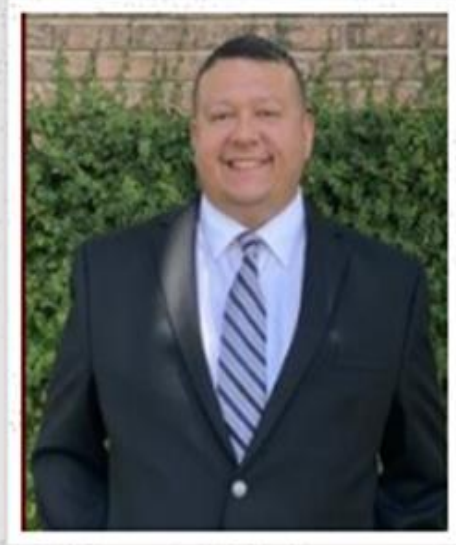
ARJH Administrative Team



**DR. SANZO,
PRINCIPAL**

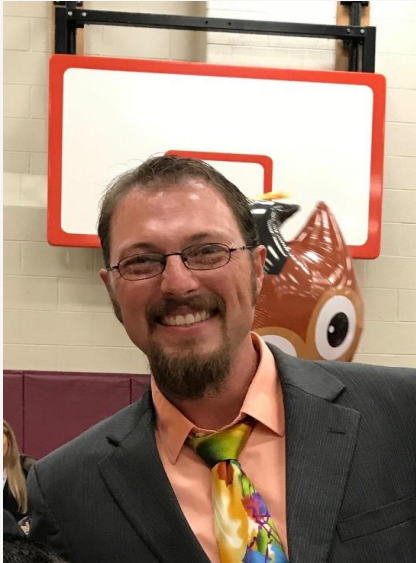


**MR. COLLINS,
ASSISTANT
PRINCIPAL**



**MR. RANGEL,
ASSISTANT
PRINCIPAL**

Reading Counselor Team



A – G
Counselor
Brek Bailey
bbailey@lcisd.org



H – N
Counselor
Jane Champagne
jchampagne@lcisd.org



O – Z
Counselor
Trudy Love
tlove@lcisd.org



Registrar/Admin Asst.
Patti Velasquez
Evalasquez@lcisd.org

ARJH MISSION

The Mission of Reading Junior High School is to provide a high quality and innovative growth experience for all students.

ARJH VISION

The Vision of Reading Junior High School is to develop a culture of mutual respect and academic excellence through rigorous instruction which produces college and career ready individuals.



Reading J H PTO

Parent Signup Instructions

1. Go to
<https://readingjh.ptboard.com>
or scan below QR code



2. Click "**Sign Up**" link to sign up
(For mobile phone, click top right menu, then "**Sign Up**" link)
3. After signing in to
<https://readingjh.ptboard.com>,
click "**Forms & Payments**" to
submit





**WE'VE GOT SPIRIT, YES WE DO!
WE'VE GOT SPIRIT, HOW 'BOUT YOU?**



Available in
Cotton & Dri Fit



Long Sleeve T-Shirt



Available in Cotton
Only (Front)



Available in Cotton
Only (Back)



Sweatshirt

Order your RJHS
Spirit Wear today at:
**PINKIEANDBLACK.COM/
**[COLLECTIONS/READING-
JUNIOR-HIGH!](http://COLLECTIONS/READING-JUNIOR-HIGH!)****

Volunteers NEEDED

Reading Junior High is seeking parent and community volunteers from professional and technical careers to speak to our 8th graders about their chosen career paths on JANUARY 12, 2024.

EVENT INFO:

JANUARY 12, 2024

TIME: TBD

READING JUNIOR HIGH



SCAN HERE TO SIGN UP!



QUESTIONS? SCAN OUR QR CODE AND FILL OUT AN INQUIRY ON OUR QUESTIONS OR COMMENTS TAB.



A RATING



9:05 am to
4:30 pm

SCHOOL HOURS

Drop off students no earlier
than 8:15 AM.

Students enter the building
at 8:30 AM.

Reading Jr. High School
2023-2024 Bell Schedule



1st 9:05-9:53
2nd 9:57- 10:45
3rd 10:49-11:37
4th 11:41-1:17
LT 1:21-1:51
5th 1:55-2:43
6th 2:47-3:35
7th 3:39-4:30

Lunches

A 11:41-12:11
B 12:14-12:44
C 12:47-1:17

A Lunch 11:41-12:11	Class 12:14-1:17	
Class 11:41-12:14	B Lunch 12:14-12:44	Class 12:47-1:17
Class 11:41-12:47		C Lunch 12:47-1:17

First Day of School




- Students enter building at 8:30- Please do not drop off earlier. School begins at 9:05 AM
- What should I bring?
- Something to write with and something to write on!
- A Great attitude for connecting, belonging and learning.
- A sense of fun!
- Comfortable Shoes- Longhorn Loop is Real!

First Day Procedures

Follow Dress Code (shoes must have a back-dress for school 😊)

Cell Phones- turned off and put in backpacks upon entering school until 4:30 PM

- You will be directed to the gym when you arrive to school.
 - Student Schedules will be handed out in the gyms (8th- Large Gym/7th Small Gym)
 - 8:30-9:00 AM- Breakfast is served in cafeteria
 - Students need to know how they are going home
 - Bus Numbers are checked during the day- review with your child
 - Bring a pen/pencil and something to write on
 - Smart Tags are given out with schedule
- 
-

Drop Off/Pick-up

- For safety purposes, all student drop off/pick-up is only allowed at the front of the building along the curb 8:30 AM and 4:30 PM.
 - **Exception:** if your child is participating in athletics, that require athletes to be in the locker room prior to 8:00 am or picked up after 5:00 pm, may be dropped off in the back.
-

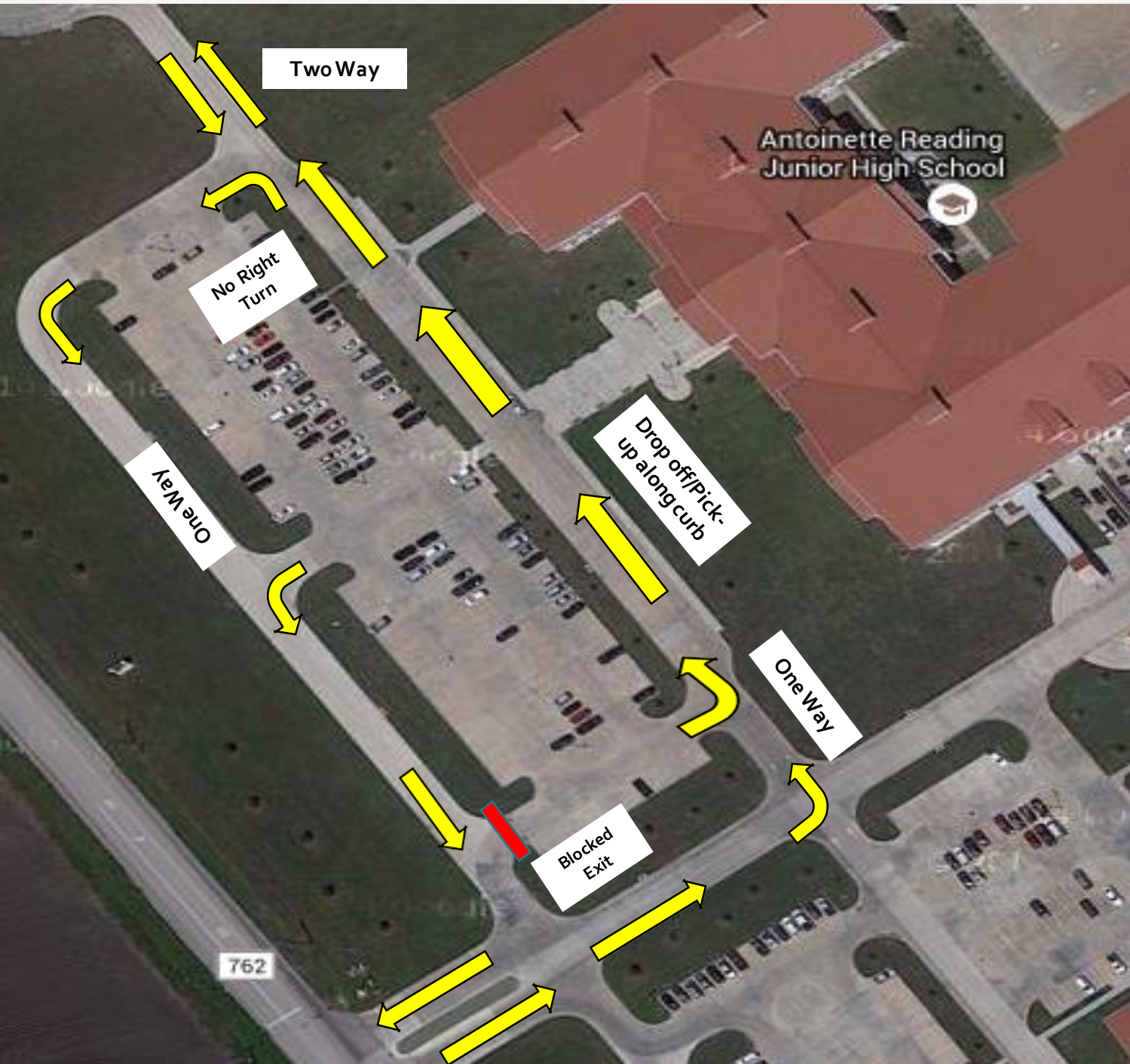
Drop Off/Pick-up

- For Safety purposes, we ask parents only pull up along the curb in the right lane to drop off and/or pick-up their child.
 - **PLEASE:** do not drop students off or pick-up in the center lanes, this poses a huge danger to your child.
-

Drop Off/Pick-up

- If you are picking your child up in the parking lot area, please make sure that you pull into a parking space and not block individuals trying to exit the parking lot. We will walk students across to the parking lot at **4:40 PM**.
 - No Parking and No Pick- Up on the street(s) behind the parking lot.
-

T R A F F I C F L O W



*MS. KENT
LIBRARIAN*



RJH LIBRARY

SCAN TO LEARN MORE





RJHS CLUBS:

- *CHESS CLUB*
- *QUILTING*
- *CERAMICS*
- *SWAT*
- *ANIME*
- *STUDENT COUNCIL*
- *NJHS*
- *SAVE OUR STRAYS*



YEARBOOK ORDERS

Mrs. Harper

Kharper@lcisd.org

Action Needed

- **All parents need to complete the Beginning of Year Forms**
 - Go to LCISD webpage
 - Click on Family Access
 - Click on Beginning of Year Forms
 - All athletes must complete forms prior to any participation in athletics
-

Skyward – Family Access

Select Language

Powered by Google Translate

Family Access

ClassLink

Find My Bus/School

Register Online

District Calendars

School Menus



LAMARCISD
A PROUD TRADITION | A BRIGHT FUTURE



STUDENTS & PARENTS SCHOOLS COMMUNITY DEPARTMENTS EMPLOYEES CAREERS ABOUT

Back to SCHOOL

1-2-3 JOIN LAMAR CISD

It's not just a place to be, it's home.

SPEAK UP

Bullying and Student Safety Reporting

#LCISDProud

SMART tag

Canvas

If need assistance, please call
832-223-4400

Skyward - Family Access

Select Language Powered by Google Translate

[Family Access](#) [ClassLink](#) [Find My Bus/School](#) [Register Online](#) [District Calendars](#) [School Menus](#) [Twitter](#) [Facebook](#) [YouTube](#) [Instagram](#) [RSS](#)



- STUDENTS & PARENTS
- SCHOOLS
- COMMUNITY
- DEPARTMENTS
- EMPLOYEES
- CAREERS
- ABOUT

Menu

- Students/Parents Home
- After School Program Providers
- Attendance, Truancy and Dropout Pre
- Bullying, School Safety and Crisis Res
- Calendars
- Character Counts
- College and Career Information
- Common Threads
- Directories and Maps
- Discipline and Placement
- Dual Credit
- Family Access
- Financial Aid & FAFSA (HB 3)
- Find My Bus/School
- General Information
- Graduation Video Archive
- House Bill 5 Information
- L.A.M.P. Mentoring Program
- LCISD Connect
- LCISD Endorsement & Programs of St
- Lamar CISD Graduation Information
- PSAT/NMSQT/Khan Academy and Na

Students & Parents Home

Home / Students & Parents / Students/Parents Home

Student Help Desk

Throughout the COVID-19 pandemic, Lamar Consolidated ISD and the LCISD Technology Services team is committed to support our students, parents, and staff. Please visit the [Student Help Desk](#) page for more information.

Students & Parents Updates

Skyward Family Access

Family Access is a free service and is available to all parents and guardians with children enrolled in the District. Family Access is a secure Internet-based website that allows parents and guardians to easily track their students' progress. There are even applications for Apple iOS and Android devices available from the appropriate stores. Among other things, this new service will allow you to view student attendance, grades, schedule, progress and assignments.



Canvas

Lamar Consolidated ISD uses the Canvas Learning Management System with all campuses across the district. Canvas is a digital tool that provides teachers, students, and parents a platform for accessing a variety of educational resources online, all from one location. Teachers and students continue to broaden their knowledge and usage of the many different features within Canvas. They use Canvas to communicate, post class resources, and participate in various learning experiences...all within a safe, online environment. We continue to be amazed when we see the creative and innovative ways that Canvas is used by teachers and students. We look forward to having Canvas be our one-stop shop for communicating and learning now and in the future.

Online Registration

English

[Click here to proceed](#)

Español

[Haga clic aquí para continuar](#)

Family Access

[Login](#)

ClassLink

ClassLink provides OneClick, single sign-on access to LCISD applications such as Office 365, online textbooks, library research resources, and instant access to files at school and in the cloud.

[Access ClassLink](#)

SMART Tag

[SMART Tag Information](#)

If need assistance, please call
832-223-4400

Family Access = Skyward

About Family Access

Family Access is a free service and is available to all parents and guardians with children enrolled in the District.

Family Access is a secure Internet-based website that allows parents and guardians to easily track their students' progress.

Among other things, this service allows you to view your child's attendance, grades, schedule, progress and assignments.

We highly recommend that parents have access!

Skyward - Family Access

SKYWARD®
LAMAR CISD
LAMAR CISD - Live Conversion Data 06/10/13

Login ID:

Password:

[Sign In](#)

[Forgot your Login/Password?](#)

05.14.06.00.06

Login Area:

LAMARCISD
A PROUD TRADITION | A BRIGHT FUTURE

© 2014 Skyward, Inc. All rights reserved.

If you forget your password, please call (832) 223-4400 and we can reset your password.

Advantages of Skyward

- Allows parent to monitor student grades
 - Allows you to receive campus e-blasts
 - Able to change contact information – e-mail and phone #
 - **Any changes in address will require proof of residency to be submitted to our registrar's office.**
-

If absent:

Bring a note

- signed by a parent
- medical professional
- or court official *within 10 days*.

Failure to provide such documentation will result in an unexcused absence.

If you know you are going to be absent, there is a pre-arranged absence form on the Reading JH website under "ABOUT" and "Attendance Office" to complete for submission to your alpha split assistant principal.

Excused vs Unexcused Absences

Electronics

- Cell phones are to be powered off and put away out of sight **in backpacks** upon entering the building and until the end of the school day at 4:30 PM.
- Phones that are taken up are subject to a \$15.00 fine and must be picked up by a parent or have prior contact with an administrator.
- We want our kids focused on instruction. Thank you for supporting us!-
Call office for messages.

Inappropriate Use of Cell Phone Practice

Inappropriate use of Cell Phone Practice:

- 1st Offense – Parent Contact, Phone confiscated and returned at end of day.
- 2nd Offense – Parent Contact, Phone confiscated, and parent must retrieve phone with a \$15 fee.
- 3rd Offense – Parent Contact, Phone confiscated, parent must retrieve phone with a \$15 fee, and student is assigned ISS.
- 4th Offense - Parent Contact, Phone confiscated, parent must retrieve phone with a \$15 fee, and student is suspended.
- 5th Offense - Parent Contact, Phone confiscated, parent must retrieve phone with a \$15 fee, and student is recommended to attend ALC.
- 6th Offense & Beyond – Recommend ALC Placement

Misuse Of Technology Resources And The Internet

The use of mobile phones or any device during tests is strictly prohibited. Any person with a phone/device out during a test will have their phone confiscated immediately for parent pickup and will receive a zero. The use of mobile phones or any device in restrooms and/or locker rooms is strictly prohibited. Any person using their phones in these areas will have their device confiscated immediately for parent pickup and will be disciplined according to the Student Code of Conduct and will be reported to law enforcement in accordance with the Texas Penal Code.

SAY WHAT! IS PROUD TO SUPPORT THIS

VAPE-FREE CAMPUS



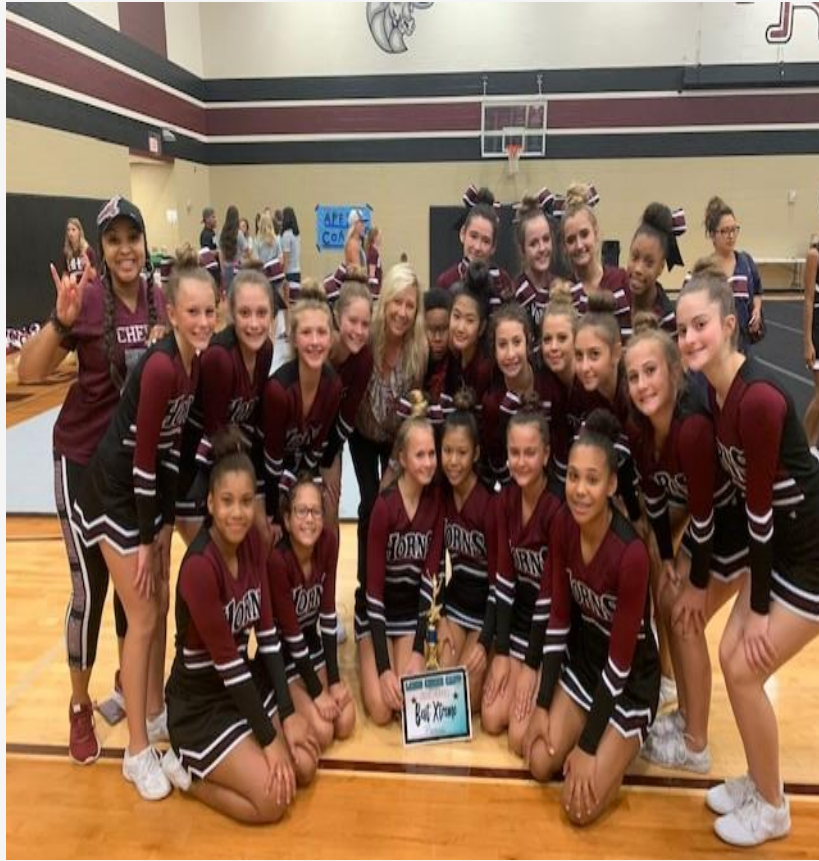
NO VAPING

Say What!
Stand up. Speak up. Be tobacco-free.

VISIT TXSAYWHAT.COM
FOR MORE INFORMATION

 /TXSAYWHAT

Hallway Transition



- Students have 4 minutes to get to class each period.
- Restroom breaks during transitions are two at a time- we have staff at restrooms to ensure we are taking care of our kids' needs.
- Safe, Fun and Orderly Environment!
 - Music during transition in the hallways at times- feel free to dance your way to class 😊!

Grading System

A student's performance is reported using numerical grades.

- **A = 90 -100**
 - **B = 80 - 89**
 - **C = 70-79**
 - **F = 69 and below**
-

Calculation of Grades for Jr. High Academic Courses

MIDDLE SCHOOL/JUNIOR HIGH CALCULATION OF GRADES

	Minor Grades Homework, classwork, quizzes requiring less than 3 days to complete				Major Grades Major assignments require 1-5 days to complete Long-Term assignments require more than 5 days to complete				
	Minimum # of Minor grades	Weight of Minor grades (% of total)	Return time of MINOR assignments to student	Late Work Penalty for Minor grades (if any)	Minimum # of Major grades	Weight of Major grades (% of total)	Return time of MAJOR assignments to student	Return time of LONG-TERM assignments to student	Late Work Penalty for Major grades (if any)
Academic	6	50%	Within 5 school days	1 st school day -15 pts. 2 nd school day -30 pts. 3 rd school day -50 pts 4+ -100 pts.	3	50%	Within 7 school days	Within 10 school days	1 st school day -15 pts. 2 nd school day -30 pts. 3 rd school day -50 pts 4+ -100 pts.
Pre-AP/GT	6	40%	Within 5 school days	1 st school day -15 pts. 2 nd school day -30 pts. 3 rd school day -50 pts 4+ -100 pts.	3	60%	Within 7 school days	Within 10 school days	1 st school day -15 pts. 2 nd school day -30 pts. 3 rd school day -50 pts 4+ -100 pts.

Calculation of Grades for High School Credit Courses

HIGH SCHOOL CALCULATION OF GRADES

Course and Level	Minor Grades Homework, classwork, quizzes requiring less than 3 days to complete				Major Grades Major assignments require 1-5 days to complete Long-Term assignments require more than 5 days to complete				
	Minimum # of Minor grades	Weight of Minor grades (% of total)	Return time of MINOR assignments to student	Late Work Penalty for Minor grades	Minimum # of Major grades	Weight of Major grades (% of total)	Return time of MAJOR assignments to student	Return time of LONG-TERM assignments to student	Late Work Penalty for Major grades
Academic	6	40%	Within 5 school days	1 st school day -20 pts. 2 nd school day -50 pts. 3+ -100 pts.	3	60%	Within 7 school days	Within 10 school days*	1 st school day -20 pts. 2 nd school day -50 pts. 3+ -100 pts.
PAP, AP, Dual, Select Articulated	6	30%	Within 5 school days	1 st school day -20 pts. 2 nd school day -50 pts. 3+ -100 pts.	3	70%	Within 7 school days	Within 10 school days*	1 st school day -20 pts. 2 nd school day -50 pts. 3+ -100 pts.
Career Preparation (Co-op)	6	30%	Within 5 school days	1 st school day -20 pts. 2 nd school day -50 pts. 3+ -100 pts.	3	40%	Within 7 school days	Within 10 school days*	1 st school day -20 pts. 2 nd school day -50 pts. 3+ -100 pts.
Employer Evaluation for Practicum or Career Prep					1 evaluation of 10 sections	30%	Within 7 school days	N/A	No credit

* English department research papers have 6 weeks

Schedule Changes

❖ Students enrolled in HS credit courses can only drop the course before the 4th week of the 1st six weeks and at the semester.

❖ Students choosing to remain in the HS credit course after the 1st six weeks, will remain in course until the end of the semester and the grade earned will be calculated into their HS GPA.

Required Courses

7th

- **Math**
 - **Science**
 - **Social Studies**
 - **ELAR**
 - **PE / Major Sports**
 - **Avid**
 - **1 Elective**
-

8th

- **Math**
- **Science**
- **Social Studies**
- **English**
- **PE / Major Sports**
- **2 Electives**

AVID

- ❖ AVID stands for "Advancement Via Individual Determination" and it is a college-preparations program designed to ensure students are academically and socially prepared for success in college.
 - ❖ AVID classes are part of the regular class schedule, and is an approved course that receives grades.
-

NATIONAL JUNIOR HONOR SOCIETY

READING JUNIOR HIGH





Lamar-George-Briscoe-Reading-Leaman **NATIONAL JUNIOR HONOR SOCIETY**

Minimum GPA: 85

Faculty Council Rubric
For Selection Criteria – 8th Grade
Beginning in 2019-2020

Must have at least 1 pt in EACH pillar and a MINIMUM of 10 points for NJHS selection.

Students must include activities from his or her seventh grade year.

SCHOLARSHIP		
GPA		PTS
95+	=	4
91-94	=	3
87-90	=	2
85-86	=	1
Sub-Total	=	
<p>Students must have a cumulative scholastic GPA average of 85 (National Honor Society standard) or higher in their core classes. The core classes are defined as any Math, Science, Social Studies, English, and Reading. This GPA cannot be based upon grade modifications and is evaluated prior to rounding. The scholastic level of achievement shall remain fixed, and is the required minimum level of scholastic achievement for admission to candidacy. All students who can rise to or above this standard will be invited as a candidate for possible selection to the organization.</p>		

LEADERSHIP		
POSITIONS		PTS
3 positions	=	3
2 positions	=	2
1 position	=	1
none	=	0
Sub-Total	=	
<p>Points will be awarded for a role in each distinct activity.</p> <p>Remember, Leadership does NOT have to be an elected position.</p> <p>NJHS Leadership Criteria =</p> <ul style="list-style-type: none"> • School & Community Leadership • School & Community Involvement • School & Community Sports <p><i>A student may be required to provide written documentation of participation on request.</i></p>		

SERVICE		
HOURS		PTS
16+	=	3
9 – 15	=	2
3-8	=	1
0-2	=	0
Sub-Total	=	
<p>A student must perform unpaid volunteer service to the school and/or to non-profit community based organizations in the local and surrounding communities.</p> <p>All service hours must be accumulated outside of the school day.</p> <p>NJHS will organize school and class projects that will provide limited opportunities for a student to accumulate hours, but students are responsible for seeking out volunteer work in the community as well as school service.</p> <p>NHS Service Criteria = School Service & Community Service.</p> <p><i>A student may be required to provide written documentation of participation on request.</i></p>		

CHARACTER	
POINTS	
3	
2	
1	
0	
Sub-Total =	
<p>A student must demonstrate high standards of character.</p> <p>All students <u>start with 3 points</u> in this Pillar.</p> <p>The NJHS Faculty Council will consider subject area teacher input and other relevant data / materials when evaluating character. The Faculty Council will also consider recognitions, awards, and work experience.</p> <p>“Points” may be deducted for reported violations of the school’s attendance or tardy policies. Point deductions are subject to the discretion of the NJHS Faculty Council.</p> <p>Students with ISS/OSS/DAEP assignments will be disqualified from NJHS for this selection process.</p> <p>Students with documented cheating or plagiarism will be disqualified them from NJHS for this selection process.</p>	

Antoinette Reading Junior High



@RJHlonghorns



Antoinette
Reading Junior
High

Methods of COMMUNICATION

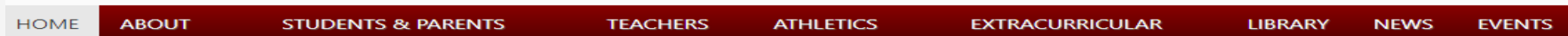


Campus Information At Antoinette Reading Junior High Website

<https://www.lcisd.org/campuses/readingjh/home>



Click [here](#) for Lamar CISD's 2020-2021 Return to School Guidelines and the latest COVID-19 updates.



Important Information for Parents!

New Student Registration Information 2020-2021
New Student Registration Information 2020-2021-
SPANISH
Please click below for our online parent news!
ARJH Parent News 8-16-20

Longhorn Updates

Please help your child remember to wear his/her lanyard every day! Students have been given a lanyard and ID. If they need to replace them (\$3.00 for ID and \$1.00 for the lanyard) please see our awesome librarian, Mrs. Mendoza. Thank you!

IMPORTANT INFO

For the safety of our students and staff, ALL visitors to our campus must sign in at the front office, present a valid state issued ID, and wear a visitor's badge. A valid state issued ID is required to enter all LCISD campuses and office buildings.

If you see bullying, Report It!
SkyAlert Quick Tip

ATHLETICS INFO AT A GLANCE

LCISD Physical Form
LCISD Athletics Parent Portal
VB Tryout Sign-Up
Volleyball Information 2020



Tweets by @RJHlonghorns

Reading Junior High Retweeted

Lamar CISD @LamarCISD
Lamar CISD is implementing the SMART tag system for students beginning the 2020-2021 school year. This system is designed to improve the safety and security of students who utilize school bus transportation.

For more information, click here:
bit.ly/31OmPN3

Embed View on Twitter

Follow us on Facebook at Antoinette Reading Junior High



Follow us on Twitter



@RJHlonghorns

Additional Help

If you have any questions you can contact me at ssanzo@lcisd.org or call (832) 223-4400.

A copy of the handbook is posted on-line at <http://www.lcisd.org> under the District Information dropdown menu.

Thank You!

